



DX13SA0606** COMMERCIAL

5-TON, THREE-PHASE SPLIT SYSTEM AIR CONDITIONER

COOLING CAPACITY:
60,000 BTU/H



■ Contents

| | |
|-----------------------------|---|
| Nomenclature..... | 2 |
| Product Specifications..... | 3 |
| Expanded Cooling Data | 4 |
| Dimensions | 6 |
| Wiring Diagrams | 7 |
| Accessories | 8 |

■ Standard Features

- Energy-efficient compressor
- Factory-installed filter drier
- Copper tube/ enhanced aluminum fin coil
- Service valves with sweat connections and easy-access gauge ports
- Contactor with lug connection
- Ground lug connection
- Units meet the performance outlined in Table 6.8.1B of ASHRAE Standard 90.1-2010

■ Cabinet Features

- Innovative louvered sound control top design
- Steel louver coil guard
- Heavy-gauge galvanized-steel cabinet
- Attractive Nickel Gray powder-paint finish
- Top and side maintenance access
- Single-panel access to controls with space provided for field-installed accessories
- When properly anchored, meets the 2010 Florida Building Code unit integrity requirements for hurricane-type winds (Anchor bracket kits available.)



| | D | X | 13 | S | A | 036 | 3 | A | A | |
|---|---|---|-----|---|---|-------|----|----|----|---|
| | 1 | 2 | 3,4 | 5 | 6 | 7,8,9 | 10 | 11 | 12 | |
| Brand D - Daikin | | | | | | | | | | Engineering Minor revision |
| Type X - AC R-410A Z - HP R-410A | | | | | | | | | | Engineering Major revision |
| EER 13 -13 SEER | | | | | | | | | | Voltage 3 - 208/230 V Three-Phase 60 Hz 4 - 460 V Three-Phase 60 Hz 6 - 380V Three-Phase 60 Hz |
| Compressor S - Single Stage | | | | | | | | | | Tonnage Nominal 036 - 3 tons 048 - 4 tons 060 - 5 tons |
| Feature Set A - Base | | | | | | | | | | |

| | DX13SA 0606A * |
|---|---------------------------|
| COOLING CAPACITIES | |
| Nominal Cooling (BTU/h) | 60,000 |
| SEER | 13 |
| Decibels | 72 |
| COMPRESSOR | |
| RLA / LRA | 9.5/66 |
| Type | Scroll |
| CONDENSER FAN MOTOR | |
| Horsepower | 1/4 |
| FLA | 0.8 |
| REFRIGERATION SYSTEM | |
| Refrigerant Line Size | |
| Liquid Line Size ("O.D.) | 3/8" |
| Suction Line Size ("O.D.) | 1 1/8" |
| Refrigerant Connection Size | |
| Liquid Valve Size ("O.D.) | 3/8" |
| Suction Valve Size ("O.D.) ^{3 4} | 7/8" ⁴ |
| Valve Type | Sweat |
| Refrigerant Charge | 130 |
| Piston Size | 0.086 |
| ELECTRICAL DATA | |
| AC Volts/ Hz/ Phase | 380-420/60/3 |
| Min. Circuit Ampacity ¹ | 11.4 |
| Max. Overcurrent Device ² | 15 |
| Min / Max Volts | 342-462 |
| Electrical Conduit Size | 1/2" or 3/4" |
| SHIP WEIGHT (LBS) | 301 |

¹ Wire size should be determined in accordance with National Electrical Codes; extensive wire runs will require larger wire sizes

² Must use time-delay fuses or HACR-type circuit breakers of the same size as noted.

³ Installer will need to supply 3/4" to 7/8" adapters for suction line connections.

⁴ Installer will need to supply 7/8" to 1 1/8" adapters for suction line connections.

NOTES

- Always check the S&R plate for electrical data on the unit being installed.
- Unit is charged with refrigerant for 15' of 3/8" liquid line. System charge must be adjusted per Installation Instructions Final Charge Procedure.

Table with columns for DB, AIRFLOW, and temperature points (65, 75, 85, 95, 105, 115). Rows include Capacity, Evap dT, Pr-Suc, Pr-Dis, OD-Amps, and Total Power for DB values 70, 1500, and 2250.

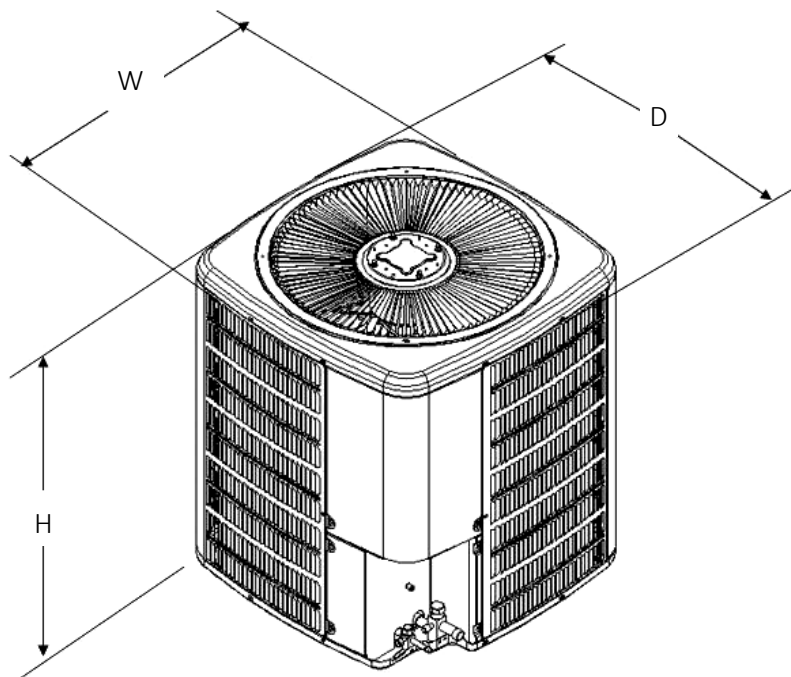
Table with columns for DB, AIRFLOW, and temperature points (65, 75, 85, 95, 105, 115). Rows include Capacity, Evap dT, Pr-Suc, Pr-Dis, OD-Amps, and Total Power for DB values 75, 1500, 2000, and 2250. Some cells are highlighted in yellow.

IDB: Entering Indoor Dry Bulb Temperature
High and low pressures are measured at the liquid and suction service valves.

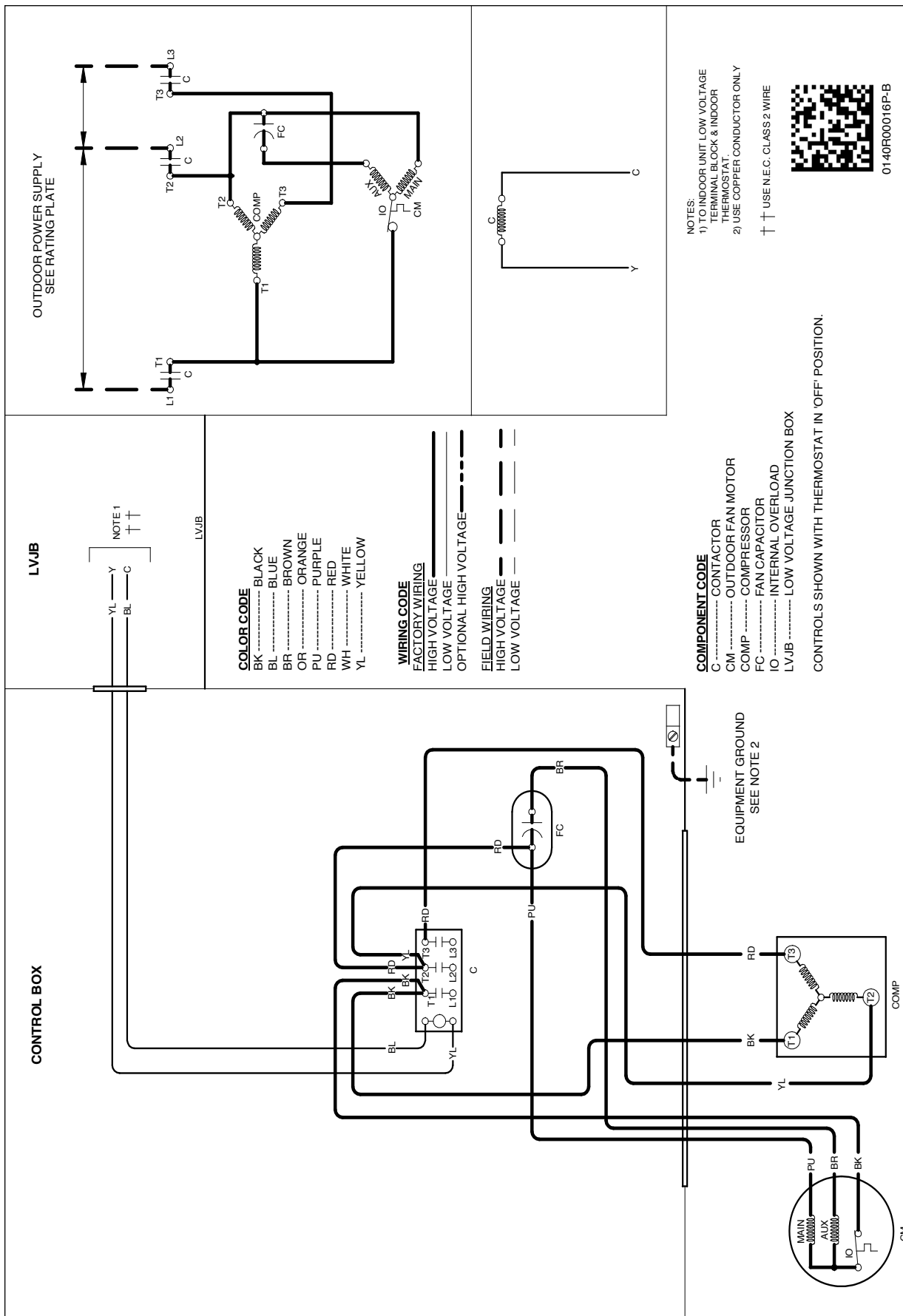
Shaded area is ACCA (TVA) conditions.

Amperage = outdoor unit amps (comp.-flan)

KW=Total system power



| MODEL | DIMENSIONS | | |
|--------------|------------|------|------|
| | W | D | H |
| DX13SA0606A* | 35½" | 35½" | 38¼" |



WARNING

⚡

High Voltage: Disconnect all power before servicing or installing this unit. Multiple power sources may be present. Failure to do so may cause property damage, personal injury, or death.

Wiring is subject to change. Always refer to the wiring diagram or the unit for the most up-to-date wiring.



0140R00016P-B

| MODEL # | DESCRIPTION | DX13SA 0606** |
|---------------------|------------------------------------|------------------|
| ABK-20 | Anchor Bracket Kit ^ | x |
| ASC-01 | Anti-Short Cycle Kit | x |
| FSK01A ¹ | Freeze Protection Kit ² | x |
| LSK01A ² | Liquid Line Solenoid Kit | x |
| LAKT01 | Low Ambient Kit | x |
| 0163R00003 | Crankcase heater | x |
| OY18-60A | Outdoor Thermostat | x |
| TX5N4 ² | TXV Kit | x |

[^] Contains 20 brackets; four brackets needed to anchor unit to pad

¹ Installed on indoor coil

² Field-installed, non-bleed, expansion valve kit — Condensing units and heat pumps with reciprocating compressors require the use of start-assist components when used in conjunction with an indoor coil using a non-bleed thermal expansion valve refrigerant metering device or liquid line solenoid kit. The TXV should always be sized based on the tonnage of the outdoor unit.