

COOLING CAPACITY: 18,000 - 60,000 BTU/H
HEATING CAPACITY: 18,000 - 60,000 BTU/H

ENERGY-EFFICIENT
SPLIT SYSTEM HEAT PUMP
UP TO 15 SEER & 9.0 HSPF



■ Contents

Nomenclature.....	2
Product Specifications.....	3
Expanded Cooling Data	4
Expanded Heating Data	20
Performance Data	22
AHRI Ratings	24
Dimensions	37
Wiring Diagram	38
Accessories	39

■ Standard Features

- Energy-efficient compressor
- Time-delay technology to ensure quiet reliable defrost
- Factory-installed bi-flow liquid line filter drier
- Factory-installed suction line accumulator
- Factory-installed compressor crankcase heater
- Factory-installed high-capacity muffler
- Single-speed condenser fan motor
- Copper tube/enhanced aluminum fin coil
- High- and low-pressure switches
- Service valves with sweat connections and easy access to gauge ports
- AHRI Certified; ETL Listed

■ Cabinet Features

- Custom Nickel Gray powder-paint finish
- 500-hour salt-spray tested
- Heavy-gauge galvanized steel cabinet with louvered sound control top
- Steel louver coil guard
- Top and side maintenance access
- Single-panel access to controls with space provided for field-installed accessories
- When properly anchored, meets the 2010 Florida Building Code unit integrity requirements for hurricane-type winds (Anchor bracket kits available.)



* Complete warranty details available from your local dealer or at www.daikincomfort.com. To receive the 12-Year Parts Limited Warranty, online registration must be completed within 60 days of installation. Online registration is not required in California or Quebec.

	D	Z	14	S	N	036	3	A	A	
	1	2	3,4	5	6	7,8,9	10	11	12	
Brand	D - Daikin									Engineering
										Major & Minor revisions * Not used for inventory control.
Type	X - AC R-410A Z - HP R-410A									Voltage
										1 - 208/230 V Single-Phase 60 Hz
SEER	13 - 13 SEER 18 - 18 SEER 14 - 14 SEER 20 - 20 SEER 16 - 16 SEER									Nominal Tonnage
										018 - 1½ tons 042 - 3½ tons 024 - 2 tons 048 - 4 tons 030 - 2½ tons 060 - 5 tons 036 - 3 tons
Compressor	S - Single Stage T - Two Stage									Feature Set
										A - Base D - Deluxe C - ComfortNet 4-Wire Ready N - Nominal

	DZ14SN 0181A*	DZ14SN 0241A*	DZ14SN 0301A*	DZ14SN 0361A*	DZ14SN 0421A*	DZ14SN 0481A*	DZ14SN 0491A*	DZ14SN 0601A*
NOMINAL CAPACITIES								
Cooling (BTU/h)	18,000	24,000	30,000	36,000	42,000	48,000	48,000	60,000
Heating (BTU/h)	18,000	24,000	30,000	36,000	42,000	48,000	48,000	60,000
SEER / EER	14/11.5	14/11.5	14/11.5	14/11.5	14/11.5	14/11.5	14/11.5	14/11.5
Decibels	72	72	74	74	75	75	76	76
COMPRESSOR								
RLA	9.0	10.9	13.5	15.4	16.7	18.5	19.9	26.4
LRA	47.5	62.9	72.5	83.9	109.0	124.0	109.0	134.0
Type	Scroll	Scroll	Scroll	Scroll	Scroll	Scroll	Scroll	Scroll
CONDENSER FAN MOTOR								
Horsepower	1/6	1/6	1/6	1/6	1/6	1/4	1/6	1/4
FLA	0.95	0.95	0.95	0.95	1.1	1.3	1.1	1.3
REFRIGERATION SYSTEM								
Refrigerant Line Size ¹								
Liquid Line Size ("O.D.)	3/8"	3/8"	3/8"	3/8"	3/8"	3/8"	3/8"	3/8"
Suction Line Size ("O.D.)	3/4"	3/4"	3/4"	7/8"	1 1/8"	1 1/8"	1 1/8"	1 1/8"
Refrigerant Connection Size								
Liquid Valve Size ("O.D.)	3/8"	3/8"	3/8"	3/8"	3/8"	3/8"	3/8"	3/8"
Suction Valve Size ("O.D.)	3/4"	3/4"	3/4"	3/4"	7/8"	3/4"	7/8"	7/8"
Valve Connection Type	Sweat	Sweat	Sweat	Sweat	Sweat	Sweat	Sweat	Sweat
Refrigerant Charge (oz.)	108	108	108	115	153	157	192	205
ELECTRICAL DATA								
Volts/Phase (60 Hz)	208-230/1	208-230/1	208-230/1	208-230/1	208-230/1	208-230/1	208-230/1	208-230/1
Minimum Circuit Ampacity ²	12.2	14.6	17.8	20.2	22.0	24.4	26.0	34.3
Max. Overcurrent Protection ³	20	25	30	35	35	40	45	60
Min / Max Volts	197 / 253	197 / 253	197 / 253	197 / 253	197 / 253	197 / 253	197 / 253	197 / 253
Electrical Conduit Size	1/2" or 3/4"	1/2" or 3/4"	1/2" or 3/4"	1/2" or 3/4"	1/2" or 3/4"	1/2" or 3/4"	1/2" or 3/4"	1/2" or 3/4"
EQUIPMENT WEIGHT (LBS)								
	143	143	171	173	191	226	273	277
SHIP WEIGHT (LBS)								
	154	154	182	184	207	237	288	292

¹ Tested and rated in accordance with ARI Standard 210/240

² Wire size should be determined in accordance with National Electrical Codes; extensive wire runs will require larger wire sizes

³ Must use time-delay fuses or HACR-type circuit breakers of the same size as noted.

NOTES

- Always check the S&R plate for electrical data on the unit being installed.
- Installer will need to supply 3/8" to 1 1/8" adapters for suction line connections.
- Unit is charged with refrigerant for 15' of 3/8" liquid line. System charge must be adjusted per Installation Instructions Final Charge Procedure.
- Installation of these units may require the specified TXV Kit to be installed on the indoor coil.
THE SPECIFIED TXV IS DETERMINED BY THE OUTDOOR UNIT NOT THE INDOOR COIL.

IDB		OUTDOOR AMBIENT TEMPERATURE																								
		65°F				75°F				85°F				95°F				105°F				115°F				
		59	63	67	71	59	63	67	71	59	63	67	71	59	63	67	71	59	63	67	71	59	63	67	71	
		ENTERING INDOOR WET BULB TEMPERATURE																								
		MBh	18.0	18.2	18.8	19.6	17.8	18.1	18.6	19.4	17.4	17.6	18.1	19.0	16.6	16.8	17.3	18.2	15.6	15.8	16.4	17.2	14.7	14.9	15.5	16.3
		S/T	1.00	0.80	0.66	0.51	1.00	0.81	0.67	0.52	1.00	0.83	0.69	0.55	1.00	1.00	0.71	0.57	1.00	1.00	0.74	0.59	1.00	1.00	0.79	0.64
		ΔT	27	25	22	19	27	25	22	19	27	25	22	19	27	25	22	19	27	25	22	18	28	26	23	19
525		kW	1.06	1.05	1.05	1.06	1.17	1.17	1.17	1.18	1.30	1.30	1.30	1.31	1.45	1.45	1.44	1.45	1.61	1.60	1.60	1.61	1.79	1.79	1.79	1.80
		Amps	4.0	4.0	4.0	4.0	4.5	4.5	4.5	4.6	5.1	5.1	5.1	5.2	5.8	5.8	5.8	5.8	6.5	6.5	6.5	6.6	7.4	7.4	7.4	7.4
		HI PR	245	246	248	252	284	285	286	291	324	325	327	331	368	369	370	375	415	416	417	422	465	466	468	472
		LO PR	125	127	130	135	133	134	138	143	140	141	144	150	145	147	150	155	151	152	155	161	158	159	162	168
80		MBh	18.2	18.5	19.0	19.8	18.1	18.3	18.9	19.7	17.6	17.9	18.4	19.2	16.8	17.1	17.6	18.4	15.8	16.1	16.6	17.4	14.9	15.2	15.7	16.5
		S/T	1.00	0.87	0.73	0.59	1.00	0.88	0.74	0.59	1.00	0.91	0.77	0.62	1.00	1.00	0.79	0.64	1.00	1.00	0.81	0.66	1.00	1.00	0.86	0.71
		ΔT	26	24	21	17	26	24	21	17	26	24	21	18	26	24	21	17	26	24	20	17	27	25	22	18
		kW	1.06	1.06	1.06	1.07	1.18	1.18	1.18	1.19	1.31	1.31	1.31	1.32	1.45	1.45	1.45	1.46	1.61	1.61	1.61	1.62	1.80	1.80	1.80	1.81
675		Amps	4.0	4.0	4.0	4.1	4.6	4.6	4.6	4.6	5.2	5.2	5.2	5.2	5.8	5.8	5.8	5.9	6.6	6.6	6.6	6.6	7.4	7.4	7.4	7.4
		HI PR	247	248	250	254	286	287	289	293	326	328	329	334	370	371	373	377	417	418	420	424	467	468	470	474
		LO PR	127	129	132	137	135	136	140	145	142	143	146	152	147	149	152	157	153	154	157	163	160	161	164	170
		MBh	18.5	18.7	19.3	20.1	18.3	18.6	19.1	19.9	17.9	18.1	18.6	19.5	17.0	17.3	17.8	18.7	16.1	16.3	16.9	17.7	15.2	15.4	16.0	16.8
85		S/T	1.00	0.90	0.76	0.62	1.00	0.91	0.77	0.62	1.00	0.94	0.80	0.65	1.00	1.00	0.82	0.67	1.00	1.00	0.84	0.69	1.00	1.00	0.89	0.74
		ΔT	25	23	20	17	25	23	20	17	25	24	20	17	25	23	20	17	25	23	20	16	26	24	21	17
		kW	1.07	1.07	1.06	1.07	1.18	1.18	1.18	1.19	1.32	1.31	1.31	1.32	1.46	1.46	1.46	1.46	1.62	1.62	1.61	1.62	1.80	1.80	1.80	1.81
		Amps	4.1	4.1	4.0	4.1	4.6	4.6	4.6	4.6	5.2	5.2	5.2	5.2	5.8	5.8	5.8	5.9	6.6	6.6	6.6	6.6	7.4	7.4	7.4	7.5
525		HI PR	246	247	249	253	285	286	288	292	325	326	328	332	369	370	372	376	416	417	419	423	466	467	469	473
		LO PR	127	129	132	137	135	136	140	145	141	143	146	151	147	149	152	157	153	154	157	163	160	161	164	170
		MBh	18.5	18.8	19.3	20.2	18.4	18.6	19.2	20.0	17.9	18.2	18.7	19.5	17.1	17.4	17.9	18.7	16.1	16.4	16.9	17.7	15.2	15.5	16.0	16.8
		S/T	1.00	0.98	0.84	0.69	1.00	1.00	0.84	0.70	1.00	1.00	0.87	0.72	1.00	1.00	0.89	0.74	1.00	1.00	0.84	0.69	1.00	1.00	0.82	0.67
610		ΔT	29	28	24	21	29	28	24	21	30	28	24	21	29	27	24	21	29	27	24	21	30	28	25	22
		kW	1.06	1.06	1.06	1.07	1.18	1.18	1.18	1.19	1.31	1.31	1.31	1.32	1.46	1.45	1.45	1.46	1.61	1.61	1.61	1.62	1.80	1.80	1.80	1.81
		Amps	4.0	4.0	4.0	4.1	4.6	4.6	4.6	4.6	5.2	5.2	5.2	5.2	5.8	5.8	5.8	5.9	6.6	6.6	6.6	6.6	7.4	7.4	7.4	7.4
		HI PR	249	250	251	256	287	288	290	294	328	329	330	335	371	372	374	378	418	419	421	425	468	469	471	475
675		LO PR	129	131	134	139	137	138	142	147	143	145	148	154	149	151	154	159	155	156	159	165	162	163	166	172
		MBh	18.8	19.0	19.6	20.4	18.6	18.9	19.4	20.2	18.2	18.4	18.9	19.8	17.4	17.6	18.1	19.0	16.4	16.6	17.2	18.0	15.5	15.7	16.3	17.1
		S/T	1.00	1.00	0.87	0.72	1.00	1.00	0.88	0.73	1.00	1.00	0.90	0.75	1.00	1.00	0.92	0.77	1.00	1.00	0.80	0.80	1.00	1.00	0.85	0.71
		ΔT	29	27	23	20	29	27	23	20	29	27	24	21	28	27	23	20	28	26	23	20	29	28	24	21
85		kW	1.07	1.07	1.07	1.07	1.19	1.19	1.18	1.19	1.32	1.32	1.32	1.32	1.46	1.46	1.46	1.47	1.62	1.62	1.62	1.63	1.81	1.80	1.80	1.81
		Amps	4.1	4.1	4.1	4.1	4.6	4.6	4.6	4.6	5.2	5.2	5.2	5.2	5.9	5.9	5.8	5.9	6.6	6.6	6.6	6.6	7.4	7.4	7.4	7.5
		HI PR	250	251	253	257	289	290	292	296	329	330	332	336	373	374	376	380	420	421	423	427	470	471	473	477
		LO PR	131	132	136	141	139	140	143	149	145	147	150	155	151	152	156	161	156	158	161	166	163	165	168	173

kW = Total system power
Amps = Outdoor unit amps (compressor + fan)

Shaded area reflects AHRI Rating Conditions.

IDB: Entering Indoor Dry Bulb Temperature
High and low pressures are measured at the liquid and suction service valves.

IDB	AIRFLOW	OUTDOOR AMBIENT TEMPERATURE												ENTERING INDOOR WET BULB TEMPERATURE											
		65°F				75°F				85°F				95°F				105°F				115°F			
		59	63	67	71	59	63	67	71	59	63	67	71	59	63	67	71	59	63	67	71	59	63	67	71
70	MBh	23.7	24.0	24.7	-	23.4	23.8	24.5	-	22.8	23.2	23.9	-	21.7	22.1	22.8	-	20.4	20.8	21.5	-	19.2	19.6	20.3	-
	S/T	0.59	0.51	0.37	-	0.60	0.52	0.37	-	0.62	0.54	0.40	-	0.65	0.56	0.42	-	1.00	0.59	0.44	-	1.00	0.64	0.50	-
	ΔT	19	17	14	-	19	17	14	-	19	17	14	-	19	17	14	-	19	17	14	-	20	18	15	-
	kW	1.41	1.40	1.40	-	1.57	1.57	1.57	-	1.76	1.76	1.75	-	1.96	1.96	1.95	-	2.18	2.18	2.18	-	2.44	2.44	2.44	-
	Amps	5.2	5.2	5.2	-	6.0	5.9	5.9	-	6.8	6.8	6.8	-	7.7	7.7	7.7	-	8.7	8.7	8.7	-	9.9	9.9	9.9	-
	HI/PR	249	250	252	-	288	290	291	-	330	331	333	-	374	375	377	-	422	423	425	-	474	475	476	-
LO/PR	123	124	128	-	130	132	135	-	137	139	142	-	143	144	147	-	148	150	153	-	155	157	160	-	
800	MBh	23.9	24.2	25.0	-	23.7	24.0	24.7	-	23.1	23.4	24.1	-	22.0	22.3	23.1	-	20.7	21.0	21.7	-	19.5	19.8	20.6	-
	S/T	0.67	0.59	0.44	-	0.67	0.59	0.45	-	0.70	0.62	0.48	-	1.00	0.64	0.50	-	1.00	0.66	0.52	-	1.00	0.72	0.58	-
	ΔT	18	16	13	-	18	16	13	-	18	16	13	-	18	16	13	-	18	16	13	-	19	17	14	-
	kW	1.41	1.41	1.41	-	1.58	1.58	1.58	-	1.77	1.76	1.76	-	1.97	1.96	1.96	-	2.19	2.19	2.19	-	2.45	2.45	2.45	-
	Amps	5.2	5.2	5.2	-	6.0	6.0	6.0	-	6.8	6.8	6.8	-	7.8	7.8	7.7	-	8.8	8.8	8.8	-	10.0	10.0	10.0	-
	HI/PR	251	252	254	-	290	292	293	-	332	333	335	-	376	377	379	-	424	426	427	-	476	477	479	-
LO/PR	125	126	129	-	132	134	137	-	139	140	143	-	144	146	149	-	150	151	154	-	157	158	161	-	
870	MBh	24.1	24.5	25.2	-	23.9	24.2	25.0	-	23.3	23.6	24.3	-	22.2	22.6	23.3	-	20.9	21.2	22.0	-	19.7	20.1	20.8	-
	S/T	0.71	0.62	0.48	-	0.71	0.63	0.49	-	0.74	0.66	0.51	-	1.00	0.68	0.53	-	1.00	0.70	0.56	-	1.00	0.76	0.61	-
	ΔT	17	16	12	-	17	15	12	-	17	16	13	-	17	15	12	-	17	15	12	-	18	16	13	-
	kW	1.42	1.42	1.42	-	1.59	1.58	1.58	-	1.77	1.77	1.77	-	1.97	1.97	1.97	-	2.20	2.19	2.19	-	2.46	2.46	2.45	-
	Amps	5.3	5.3	5.2	-	6.0	6.0	6.0	-	6.9	6.9	6.8	-	7.8	7.8	7.8	-	8.8	8.8	8.8	-	10.0	10.0	10.0	-
	HI/PR	252	253	255	-	292	293	295	-	333	334	336	-	378	379	381	-	426	427	429	-	477	478	480	-
LO/PR	126	127	130	-	133	135	138	-	140	141	145	-	145	147	150	-	151	152	156	-	158	159	163	-	
75	MBh	23.7	24.0	24.7	25.8	23.5	23.8	24.5	25.6	22.8	23.2	23.9	25.0	21.8	22.1	22.8	23.9	20.5	20.8	21.5	22.6	19.3	19.6	20.3	21.4
	S/T	0.80	0.72	0.58	0.43	0.81	0.73	0.59	0.44	1.00	0.76	0.61	0.46	1.00	0.78	0.63	0.48	1.00	0.80	0.66	0.51	1.00	1.00	0.71	0.56
	ΔT	22	20	17	13	21	20	17	13	22	20	17	14	21	20	17	13	21	20	16	13	22	21	17	14
	kW	1.40	1.40	1.40	1.41	1.57	1.57	1.57	1.58	1.76	1.75	1.75	1.76	1.96	1.96	1.96	1.96	2.18	2.18	2.18	2.19	2.44	2.44	2.44	2.45
	Amps	5.2	5.2	5.2	5.2	5.9	5.9	5.9	6.0	6.8	6.8	6.8	6.8	7.7	7.7	7.7	7.8	8.7	8.7	8.7	8.8	9.9	9.9	9.9	10.0
	HI/PR	249	250	252	256	289	290	291	296	330	331	333	337	375	376	377	382	423	424	425	430	474	475	477	481
LO/PR	123	125	128	133	131	132	135	140	137	139	142	147	143	144	147	153	148	150	153	158	155	157	160	165	
800	MBh	23.9	24.3	25.0	26.1	23.7	24.0	24.8	25.8	23.1	23.4	24.1	25.2	22.0	22.4	23.1	24.2	20.7	21.1	21.8	22.8	19.5	19.9	20.6	21.7
	S/T	0.80	0.72	0.58	0.43	0.81	0.73	0.59	0.44	1.00	0.76	0.61	0.46	1.00	0.78	0.63	0.48	1.00	0.80	0.66	0.51	1.00	1.00	0.71	0.56
	ΔT	22	20	17	13	21	20	17	13	22	20	17	14	21	20	17	13	21	20	16	13	22	21	17	14
	kW	1.41	1.41	1.41	1.42	1.58	1.58	1.58	1.59	1.76	1.76	1.76	1.77	1.96	1.96	1.96	1.97	2.19	2.19	2.18	2.20	2.45	2.45	2.45	2.46
	Amps	5.2	5.2	5.2	5.3	6.0	6.0	6.0	6.0	6.8	6.8	6.8	6.9	7.8	7.7	7.7	7.8	8.8	8.8	8.8	8.8	10.0	10.0	10.0	10.0
	HI/PR	251	252	254	258	291	292	294	298	332	333	335	339	377	378	379	384	425	426	426	432	476	477	479	483
LO/PR	125	126	129	135	132	134	137	142	139	140	143	149	144	146	149	154	150	151	154	160	157	158	161	167	
870	MBh	24.1	24.5	25.2	26.3	23.9	24.3	25.0	26.1	23.3	23.6	24.3	25.4	22.2	22.6	23.3	24.4	20.9	21.3	22.0	23.1	19.7	20.1	20.8	21.9
	S/T	0.84	0.76	0.62	0.47	1.00	0.77	0.62	0.47	1.00	0.79	0.65	0.50	1.00	0.82	0.67	0.52	1.00	0.84	0.69	0.54	1.00	1.00	0.75	0.60
	ΔT	21	19	16	13	21	19	16	13	21	19	16	13	21	19	16	13	21	19	16	13	22	20	17	14
	kW	1.42	1.42	1.41	1.43	1.58	1.58	1.58	1.59	1.77	1.77	1.77	1.78	1.97	1.97	1.97	1.98	2.19	2.19	2.19	2.20	2.46	2.46	2.45	2.47
	Amps	5.3	5.2	5.2	5.3	6.0	6.0	6.0	6.1	6.9	6.9	6.8	6.9	7.8	7.8	7.8	7.8	8.8	8.8	8.8	8.8	10.0	10.0	10.0	10.0
	HI/PR	253	254	255	260	292	293	295	299	333	335	336	341	378	379	381	385	426	427	427	433	477	478	480	484
LO/PR	126	127	130	136	133	135	138	143	140	141	145	150	146	147	150	155	151	153	156	161	158	159	163	168	

IDB: Entering Indoor Dry Bulb Temperature
 High and low pressures are measured at the liquid and suction service valves.
 Shaded area reflects ACCA (TVA) Rating Conditions.
 kW = Total system power
 Amps = Outdoor unit amps (compressor + fan)

EXPANDED COOLING DATA — DZ14SN0301A* + ARUF29B14** + TXV

IDB	OUTDOOR AMBIENT TEMPERATURE																																																																	
	65°F										75°F										85°F										95°F					105°F					115°F																									
	AIRFLOW	59	63	67	71	59	63	67	71	59	63	67	71	59	63	67	71	59	63	67	71	59	63	67	71	59	63	67	71	59	63	67	71	59	63	67	71	59	63	67	71	59	63	67	71	59	63	67	71																	
70	870	MBh	28.4	28.8	29.7	-	28.2	28.6	29.4	-	27.5	27.9	28.7	-	26.2	26.6	27.4	-	24.7	25.1	25.9	-	23.3	23.6	24.5	-	23.3	23.6	24.5	-	24.7	25.1	25.9	-	24.7	25.1	25.9	-	24.7	25.1	25.9	-	24.7	25.1	25.9	-	24.7	25.1	25.9	-	24.7	25.1	25.9	-	24.7	25.1	25.9	-	24.7	25.1	25.9	-				
		S/T	0.65	0.57	0.44	-	0.66	0.58	0.45	-	0.68	0.61	0.47	-	0.70	0.62	0.49	-	0.72	0.65	0.51	-	1.00	0.70	0.56	-	1.00	0.70	0.56	-	0.72	0.65	0.51	-	0.72	0.65	0.51	-	0.72	0.65	0.51	-	0.72	0.65	0.51	-	0.72	0.65	0.51	-	0.72	0.65	0.51	-	0.72	0.65	0.51	-	0.72	0.65	0.51	-				
		ΔT	1.9	1.7	1.3	-	1.9	1.7	1.3	-	1.9	1.7	1.4	-	1.8	1.7	1.3	-	1.8	1.7	1.3	-	18	17	13	-	20	18	14	-	18	17	13	-	18	17	13	-	18	17	13	-	18	17	13	-	18	17	13	-	18	17	13	-	18	17	13	-	18	17	13	-	18	17	13	-
		kW	1.69	1.69	1.68	-	1.89	1.89	1.89	-	2.12	2.11	2.11	-	2.36	2.36	2.35	-	2.63	2.63	2.63	-	2.95	2.95	2.95	-	2.95	2.95	2.95	-	2.63	2.63	2.63	-	2.63	2.63	2.63	-	2.63	2.63	2.63	-	2.63	2.63	2.63	-	2.63	2.63	2.63	-	2.63	2.63	2.63	-	2.63	2.63	2.63	-								
		Amps	6.5	6.5	6.5	-	7.5	7.5	7.4	-	8.5	8.5	8.5	-	9.6	9.6	9.6	-	10.9	10.9	10.8	-	12.3	12.3	12.3	-	12.3	12.3	12.3	-	10.9	10.9	10.8	-	10.9	10.9	10.8	-	10.9	10.9	10.8	-	10.9	10.9	10.8	-	10.9	10.9	10.8	-	10.9	10.9	10.8	-	10.9	10.9	10.8	-								
	HI PR	250	251	253	-	289	290	292	-	330	331	333	-	374	375	377	-	422	423	425	-	473	474	475	-	473	474	475	-	422	423	425	-	422	423	425	-	422	423	425	-	422	423	425	-	422	423	425	-	422	423	425	-	422	423	425	-									
	LO PR	118	120	123	-	125	127	130	-	131	133	136	-	137	138	141	-	142	143	146	-	148	150	153	-	148	150	153	-	142	143	146	-	142	143	146	-	142	143	146	-	142	143	146	-	142	143	146	-	142	143	146	-	142	143	146	-									
	MBh	29.0	29.4	30.2	-	28.7	29.1	30.0	-	28.0	28.4	29.2	-	26.7	27.1	28.0	-	25.2	25.6	26.4	-	23.8	24.2	25.0	-	23.8	24.2	25.0	-	25.2	25.6	26.4	-	25.2	25.6	26.4	-	25.2	25.6	26.4	-	25.2	25.6	26.4	-	25.2	25.6	26.4	-	25.2	25.6	26.4	-													
	S/T	0.69	0.61	0.48	-	0.69	0.62	0.49	-	0.72	0.64	0.51	-	0.74	0.66	0.53	-	1.00	0.68	0.55	-	1.00	0.73	0.60	-	1.00	0.73	0.60	-	0.72	0.64	0.53	-	0.72	0.64	0.53	-	0.72	0.64	0.53	-	0.72	0.64	0.53	-	0.72	0.64	0.53	-	0.72	0.64	0.53	-													
	ΔT	1.8	1.6	1.2	-	1.8	1.6	1.2	-	1.8	1.6	1.3	-	1.8	1.6	1.2	-	17	15	12	-	18	17	13	-	18	17	13	-	18	16	12	-	18	16	12	-	18	16	12	-	18	16	12	-	18	16	12	-	18	16	12	-	18	16	12	-									
	kW	1.70	1.70	1.69	-	1.90	1.90	1.90	-	2.13	2.12	2.12	-	2.37	2.37	2.36	-	2.64	2.64	2.64	-	2.96	2.96	2.96	-	2.96	2.96	2.96	-	2.37	2.37	2.36	-	2.37	2.37	2.36	-	2.37	2.37	2.36	-	2.37	2.37	2.36	-	2.37	2.37	2.36	-	2.37	2.37	2.36	-													
Amps	6.6	6.6	6.6	-	7.5	7.5	7.5	-	8.5	8.5	8.5	-	9.7	9.7	9.6	-	10.9	10.9	10.9	-	12.4	12.4	12.4	-	12.4	12.4	12.4	-	9.7	9.7	9.6	-	9.7	9.7	9.6	-	9.7	9.7	9.6	-	9.7	9.7	9.6	-	9.7	9.7	9.6	-	9.7	9.7	9.6	-														
HI PR	252	254	255	-	292	293	294	-	333	334	335	-	377	378	380	-	424	425	427	-	475	476	478	-	475	476	478	-	377	378	380	-	377	378	380	-	377	378	380	-	377	378	380	-	377	378	380	-	377	378	380	-														
LO PR	120	122	125	-	128	129	132	-	134	135	138	-	139	140	143	-	144	146	149	-	151	152	155	-	151	152	155	-	139	140	143	-	139	140	143	-	139	140	143	-	139	140	143	-	139	140	143	-	139	140	143	-														
MBh	29.6	30.0	30.9	-	29.4	29.8	30.6	-	28.6	29.0	29.9	-	27.4	27.8	28.6	-	25.8	26.2	27.1	-	24.4	24.8	25.7	-	24.4	24.8	25.7	-	27.4	27.8	28.6	-	27.4	27.8	28.6	-	27.4	27.8	28.6	-	27.4	27.8	28.6	-	27.4	27.8	28.6	-																		
S/T	0.69	0.62	0.49	-	0.70	0.62	0.49	-	0.72	0.65	0.52	-	0.74	0.67	0.54	-	1.00	0.69	0.56	-	1.00	0.74	0.61	-	1.00	0.74	0.61	-	0.72	0.65	0.52	-	0.72	0.65	0.52	-	0.72	0.65	0.52	-	0.72	0.65	0.52	-	0.72	0.65	0.52	-																		
ΔT	1.7	1.5	1.1	-	1.7	1.5	1.1	-	1.7	1.5	1.2	-	1.7	1.5	1.1	-	16	15	11	-	17	16	12	-	17	16	12	-	17	15	11	-	17	15	11	-	17	15	11	-	17	15	11	-	17	15	11	-																		
kW	1.71	1.71	1.70	-	1.91	1.91	1.90	-	2.13	2.13	2.13	-	2.38	2.38	2.37	-	2.65	2.65	2.65	-	2.97	2.97	2.97	-	2.97	2.97	2.97	-	2.38	2.38	2.37	-	2.38	2.38	2.37	-	2.38	2.38	2.37	-	2.38	2.38	2.37	-	2.38	2.38	2.37	-																		
Amps	6.6	6.6	6.6	-	7.6	7.6	7.5	-	8.6	8.6	8.6	-	9.7	9.7	9.7	-	11.0	10.9	10.9	-	12.4	12.4	12.4	-	12.4	12.4	12.4	-	8.6	8.6	8.6	-	8.6	8.6	8.6	-	8.6	8.6	8.6	-	8.6	8.6	8.6	-	8.6	8.6	8.6	-																		
HI PR	255	256	258	-	294	295	297	-	335	336	338	-	379	380	382	-	427	428	430	-	478	479	480	-	478	479	480	-	379	380	382	-	379	380	382	-	379	380	382	-	379	380	382	-	379	380	382	-																		
LO PR	123	124	127	-	130	132	134	-	136	138	141	-	142	143	146	-	147	148	151	-	153	155	158	-	153	155	158	-	142	143	146	-	142	143	146	-	142	143	146	-	142	143	146	-	142	143	146	-																		

Shaded area reflects ACCA (TVA) Rating Conditions.

IDB: Entering Indoor Dry Bulb Temperature
High and low pressures are measured at the liquid and suction service valves.

Amps = Outdoor unit amps (compressor + fan)
kW = Total system power

IDB		OUTDOOR AMBIENT TEMPERATURE											105°F											115°F										
		65°F			75°F			85°F			95°F			105°F			115°F			105°F			115°F											
		59	63	67	71	75	79	83	87	91	95	99	103	107	111	115	119	123	127	131	135	139	143	147	151	155	159	163	167	171	175			
80	1070	MBh	36.5	37.0	38.1	39.7	36.2	36.7	37.7	39.4	35.2	35.7	36.8	38.4	33.6	34.1	35.2	36.8	31.7	32.2	33.2	34.9	29.9	30.4	31.4	33.1								
		S/T	0.90	0.82	0.69	0.55	1.00	0.83	0.70	0.56	1.00	0.85	0.72	0.58	1.00	0.87	0.74	0.60	1.00	1.00	1.00	0.76	0.62	1.00	1.00	0.81	0.67							
		ΔT	28	26	22	19	28	26	22	19	28	26	23	19	28	26	22	19	28	28	26	22	18	29	27	23	20							
		kW	2.17	2.17	2.16	2.18	2.43	2.43	2.43	2.45	2.73	2.73	2.72	2.74	2.76	3.05	3.05	3.04	3.06	3.41	3.41	3.41	3.40	3.42	3.83	3.83	3.82	3.84						
		Amps	8.3	8.3	8.2	8.3	9.5	9.5	9.5	9.6	10.8	10.8	10.8	10.9	11.0	12.3	12.3	12.3	12.4	13.9	13.9	13.9	13.9	14.0	15.9	15.9	15.8	15.9						
		HI PR	264	265	267	272	305	306	308	313	349	350	351	356	356	395	396	398	403	445	446	446	448	453	499	500	502	506						
	LO PR	122	123	127	132	129	131	134	139	136	137	140	145	145	141	143	146	151	146	148	148	151	156	153	154	157	163							
	MBh	37.0	37.5	38.6	40.2	36.7	37.2	38.3	39.9	35.8	36.3	37.4	39.0	34.2	34.7	35.7	37.4	32.2	32.7	33.7	35.4	35.4	30.4	30.9	32.0	33.6								
	S/T	1.00	0.86	0.72	0.58	1.00	0.86	0.73	0.59	1.00	0.89	0.75	0.61	1.00	0.90	0.77	0.63	1.00	1.00	1.00	0.79	0.65	1.00	1.00	0.84	0.71								
	ΔT	27	25	21	18	27	25	21	18	27	25	22	18	27	25	21	18	27	28	26	22	17	28	26	22	19								
	kW	2.18	2.18	2.17	2.19	2.45	2.44	2.44	2.46	2.74	2.74	2.74	2.76	3.06	3.06	3.06	3.08	3.42	3.42	3.41	3.43	3.43	3.84	3.84	3.83	3.85								
	Amps	8.3	8.3	8.3	8.4	9.5	9.5	9.5	9.6	10.9	10.9	10.9	11.0	12.4	12.4	12.3	12.4	14.0	14.0	14.0	14.0	14.0	15.9	15.9	15.9	16.0								
HI PR	266	267	269	274	307	309	310	315	351	352	354	358	397	398	400	405	447	448	448	450	455	501	502	504	508									
LO PR	124	125	128	133	131	133	136	141	138	139	142	147	143	144	147	153	148	150	150	153	158	155	156	159	164									
MBh	37.8	38.3	39.4	41.0	37.5	38.0	39.1	40.7	36.5	37.1	38.1	39.8	34.9	35.4	36.5	38.1	33.0	33.5	34.5	36.2	36.2	31.2	31.7	32.8	34.4									
S/T	1.00	0.87	0.73	0.60	1.00	0.87	0.74	0.60	1.00	0.90	0.77	0.63	1.00	1.00	0.78	0.64	1.00	1.00	1.00	0.81	0.67	1.00	1.00	0.86	0.72									
ΔT	26	24	20	17	26	24	20	17	26	24	21	17	26	24	20	17	26	26	24	20	16	27	25	21	18									
kW	2.19	2.19	2.19	2.21	2.46	2.46	2.45	2.47	2.75	2.75	2.75	2.77	3.07	3.07	3.07	3.09	3.43	3.43	3.42	3.44	3.44	3.85	3.85	3.84	3.86									
Amps	8.4	8.4	8.4	8.4	9.6	9.6	9.6	9.7	10.9	10.9	10.9	11.0	12.4	12.4	12.4	12.5	14.0	14.0	14.0	14.0	14.0	16.0	16.0	16.0	16.0									
HI PR	269	270	272	276	310	311	313	317	353	354	356	361	400	401	403	407	450	450	451	453	457	503	504	506	511									
LO PR	126	128	131	136	134	135	138	143	140	142	145	150	145	147	150	155	151	152	152	155	160	157	159	162	167									
MBh	37.1	37.6	38.7	40.3	36.8	37.3	38.3	40.0	35.8	36.3	37.4	39.0	34.2	34.7	35.8	37.4	32.3	32.8	33.8	35.5	35.5	30.5	31.0	32.0	33.7									
S/T	1.00	0.92	0.79	0.65	1.00	0.93	0.80	0.66	1.00	1.00	0.82	0.68	1.00	1.00	0.84	0.70	1.00	1.00	0.86	0.72	1.00	1.00	1.00	0.77										
ΔT	32	30	26	22	32	30	26	22	32	30	26	23	31	30	26	22	31	31	29	26	22	32	31	27	23									
kW	2.17	2.17	2.17	2.19	2.44	2.44	2.43	2.45	2.74	2.73	2.73	2.75	3.06	3.05	3.05	3.07	3.41	3.41	3.41	3.43	3.43	3.83	3.83	3.83	3.85									
Amps	8.3	8.3	8.3	8.4	9.5	9.5	9.5	9.6	10.9	10.9	10.8	10.9	12.3	12.3	12.3	12.4	14.0	14.0	14.0	13.9	14.0	15.9	15.9	15.9	16.0									
HI PR	265	266	268	273	307	308	310	314	350	351	353	357	396	397	399	404	446	448	448	449	454	500	501	503	507									
LO PR	124	125	128	133	131	133	136	141	137	139	142	147	143	144	147	152	148	150	150	153	158	155	156	159	164									
MBh	37.6	38.1	39.2	40.8	37.3	37.8	38.9	40.5	36.4	36.9	38.0	39.6	34.8	35.3	36.4	38.0	32.8	33.3	34.4	36.0	36.0	31.0	31.5	32.6	34.2									
S/T	1.00	0.95	0.82	0.68	1.00	0.96	0.83	0.69	1.00	1.00	0.85	0.71	1.00	1.00	0.87	0.73	1.00	1.00	0.89	0.75	1.00	1.00	1.00	0.80										
ΔT	31	29	25	21	31	29	25	21	31	29	25	22	31	29	25	21	30	30	28	25	21	31	30	26	22									
kW	2.19	2.18	2.18	2.20	2.45	2.45	2.44	2.46	2.75	2.74	2.74	2.76	3.07	3.06	3.06	3.08	3.42	3.42	3.42	3.44	3.44	3.84	3.84	3.84	3.86									
Amps	8.4	8.3	8.3	8.4	9.6	9.6	9.5	9.6	10.9	10.9	10.9	11.0	12.4	12.4	12.4	12.4	14.0	14.0	14.0	14.0	14.1	15.9	15.9	15.9	16.0									
HI PR	267	269	270	275	309	310	312	316	352	353	355	359	398	399	401	406	448	450	450	451	456	502	503	505	509									
LO PR	126	127	130	135	133	134	137	143	139	141	144	149	145	146	149	154	150	151	151	155	160	157	158	161	166									
MBh	38.4	38.9	40.0	41.6	38.1	38.6	39.7	41.3	37.2	37.7	38.7	40.4	35.5	36.0	37.1	38.8	33.6	34.1	35.2	36.8	36.8	31.8	32.3	33.4	35.0									
S/T	1.00	0.97	0.83	0.69	1.00	1.00	0.84	0.70	1.00	1.00	0.86	0.72	1.00	1.00	0.88	0.74	1.00	1.00	0.90	0.77	1.00	1.00	1.00	0.82										
ΔT	30	28	24	21	30	28	24	20	30	28	24	21	30	28	24	21	29	29	27	24	20	31	29	25	21									
kW	2.20	2.20	2.19	2.21	2.46	2.46	2.46	2.48	2.76	2.76	2.75	2.77	3.08	3.08	3.07	3.09	3.44	3.43	3.43	3.45	3.45	3.86	3.85	3.85	3.87									
Amps	8.4	8.4	8.4	8.5	9.6	9.6	9.6	9.7	11.0	11.0	10.9	11.0	12.4	12.4	12.4	12.5	14.1	14.1	14.0	14.0	14.1	16.0	16.0	16.0	16.1									
HI PR	270	271	273	277	311	312	314	319	354	355	357	362	401	402	404	408	451	452	454	458	458	504	506	507	512									
LO PR	128	130	133	138	135	137	140	145	142	143	146	151	147	149	152	157	153	154	157	162	162	159	161	164	169									

Shaded area reflects AHRI Rating Conditions.

kW = Total system power
Amps = Outdoor unit amps (compressor + fan)

IDB: Entering Indoor Dry Bulb Temperature
High and low pressures are measured at the liquid and suction service valves.

IDB		OUTDOOR AMBIENT TEMPERATURE																															
		65°F					75°F					85°F					95°F					105°F					115°F						
		AIRFLOW		59	63	67	71	59		63	67	71	59		63	67	71	59		63	67	71	59		63	67	71	59		63	67	71	
ENTERING INDOOR WET BULB TEMPERATURE		59	63	67	71	59	63	67	71	59	63	67	71	59	63	67	71	59	63	67	71	59	63	67	71	59	63	67	71	59	63	67	71
70	1300	MBh	40.2	40.8	41.9	-	39.8	40.4	41.6	-	38.8	39.4	40.6	-	37.0	37.6	38.8	-	34.8	35.4	36.6	-	32.9	33.4	34.6	-	32.9	33.4	34.6	-			
		S/T	0.66	0.59	0.45	-	0.67	0.59	0.46	-	0.69	0.62	0.48	-	1.00	0.64	0.50	-	1.00	0.66	0.52	-	1.00	0.71	0.58	-	1.00	0.71	0.58	-			
		ΔT	18	17	13	-	18	16	13	-	19	17	13	-	18	16	13	-	18	16	13	-	19	17	14	-	19	17	14	-			
		kW	2.44	2.44	2.44	-	2.72	2.72	2.72	-	3.03	3.03	3.03	-	3.37	3.37	3.36	-	3.74	3.74	3.73	-	4.18	4.18	4.17	-	4.18	4.18	4.17	-			
		Amps	9.0	9.0	8.9	-	10.2	10.2	10.2	-	11.7	11.6	11.6	-	13.2	13.2	13.2	-	14.9	14.9	14.9	-	16.9	16.9	16.9	-	16.9	16.9	16.9	-			
	1400	HI PR	254	255	257	-	294	295	297	-	335	337	338	-	380	381	383	-	429	430	431	-	480	481	483	-	480	481	483	-			
		LO PR	124	125	129	-	131	133	136	-	138	139	143	-	143	145	148	-	149	150	153	-	156	157	160	-	156	157	160	-			
		MBh	40.6	41.1	42.3	-	40.2	40.8	42.0	-	39.2	39.7	40.9	-	37.4	38.0	39.1	-	35.2	35.8	37.0	-	33.2	33.8	35.0	-	33.2	33.8	35.0	-			
		S/T	0.69	0.61	0.48	-	0.69	0.62	0.48	-	0.72	0.64	0.51	-	1.00	0.66	0.53	-	1.00	0.68	0.55	-	1.00	0.73	0.60	-	1.00	0.73	0.60	-			
		ΔT	18	16	13	-	18	16	13	-	18	16	13	-	18	16	13	-	17	16	12	-	19	17	13	-	19	17	13	-			
1575	kW	2.46	2.46	2.46	-	2.74	2.74	2.74	-	3.04	3.04	3.03	-	3.37	3.37	3.37	-	3.75	3.75	3.74	-	4.19	4.19	4.18	-	4.19	4.19	4.18	-				
	Amps	9.0	9.0	9.0	-	10.3	10.3	10.3	-	11.7	11.7	11.7	-	13.2	13.2	13.2	-	14.9	14.9	14.9	-	17.0	17.0	16.9	-	17.0	17.0	17.0	-				
	HI PR	255	256	258	-	295	296	298	-	337	338	340	-	382	383	384	-	430	431	433	-	481	483	484	-	481	483	484	-				
	LO PR	125	127	130	-	133	134	137	-	139	141	144	-	145	146	149	-	150	152	155	-	157	158	161	-	157	158	161	-				
	MBh	41.3	41.9	43.1	-	41.0	41.5	42.7	-	39.9	40.5	41.7	-	38.2	38.7	39.9	-	36.0	36.5	37.7	-	34.0	34.6	35.7	-	34.0	34.6	35.7	-				
75	1300	MBh	40.2	40.8	42.0	43.8	39.9	40.4	41.6	43.4	38.8	39.4	40.6	42.4	37.0	37.6	38.8	40.6	34.9	35.4	36.6	38.4	32.9	33.4	34.6	36.4							
		S/T	0.79	0.72	0.58	0.44	0.80	0.72	0.59	0.44	1.00	0.75	0.61	0.47	1.00	0.77	0.63	0.49	1.00	0.79	0.65	0.51	1.00	1.00	0.70	0.56							
		ΔT	22	20	17	14	22	20	17	14	22	21	17	14	22	20	16	13	22	20	17	13	23	21	18	14							
		kW	2.44	2.44	2.44	2.46	2.72	2.72	2.71	2.73	3.03	3.03	3.02	3.04	3.37	3.36	3.36	3.38	3.74	3.74	3.73	3.75	4.18	4.18	4.17	4.19							
		Amps	9.0	9.0	8.9	9.0	10.2	10.2	10.2	10.3	11.6	11.6	11.6	11.7	13.2	13.2	13.2	13.2	14.9	14.9	14.9	15.0	16.9	16.9	16.9	17.0							
	1400	HI PR	254	255	257	261	294	295	297	301	336	337	338	343	380	382	383	388	429	430	432	436	480	481	483	488							
		LO PR	124	126	129	134	131	133	136	141	138	139	143	148	143	145	148	153	149	150	153	159	156	157	160	165							
		MBh	40.6	41.2	42.3	44.2	40.2	40.8	42.0	43.8	39.2	39.8	40.9	42.8	37.4	38.0	39.2	41.0	35.2	35.8	37.0	38.8	33.3	33.8	35.0	36.8							
		S/T	0.82	0.74	0.60	0.46	0.82	0.75	0.61	0.47	1.00	0.77	0.64	0.49	1.00	0.79	0.65	0.51	1.00	0.81	0.68	0.53	1.00	1.00	0.73	0.59							
		ΔT	22	20	17	13	22	20	16	13	22	20	17	13	22	20	16	13	22	20	16	13	22	21	17	14							
1575	kW	2.45	2.45	2.44	2.47	2.73	2.73	2.72	2.74	3.04	3.04	3.03	3.05	3.37	3.37	3.37	3.39	3.75	3.75	3.74	3.76	4.19	4.18	4.18	4.20								
	Amps	9.0	9.0	9.0	9.1	10.3	10.3	10.2	10.3	11.7	11.7	11.7	11.8	13.2	13.2	13.2	13.3	14.9	14.9	14.9	15.0	16.9	16.9	16.9	17.0								
	HI PR	256	257	258	263	295	296	298	303	337	338	340	344	382	383	385	389	430	431	433	437	482	483	485	489								
	LO PR	125	127	130	135	133	134	137	142	139	141	144	149	145	146	149	154	150	152	155	160	157	158	161	167								
	MBh	41.4	41.9	43.1	44.9	41.0	41.6	42.7	44.6	40.0	40.5	41.7	43.5	38.2	38.7	39.9	41.7	36.0	36.6	37.7	39.6	34.0	34.6	35.8	37.6								

IDB: Entering Indoor Dry Bulb Temperature
 High and low pressures are measured at the liquid and suction service valves.
 Shaded area reflects ACCA (TVA) Rating Conditions.
 kW = Total system power
 Amps = Outdoor unit amps (compressor + fan)

IDB	AIRFLOW	OUTDOOR AMBIENT TEMPERATURE												115°F												
		65°F				75°F				85°F				95°F				105°F				115°F				
		59	63	67	71	59	63	67	71	59	63	67	71	59	63	67	71	59	63	67	71	59	63	67	71	
ENTERING INDOOR WET BULB TEMPERATURE																										
80	1300	MBh	40.4	41.0	42.2	44.0	40.1	40.6	41.8	43.6	39.0	39.6	40.8	42.6	37.3	37.8	39.0	40.8	35.1	35.6	36.8	38.6	33.1	33.6	34.8	36.6
		S/T	1.00	0.84	0.71	0.56	1.00	0.85	0.71	0.57	1.00	0.87	0.74	0.59	1.00	1.00	0.76	0.61	1.00	1.00	0.78	0.64	1.00	1.00	0.83	0.69
		ΔT	26	24	21	18	26	24	21	18	26	25	21	18	26	24	21	18	26	24	21	17	27	25	22	18
	1400	kW	2.44	2.44	2.44	2.46	2.72	2.72	2.72	2.74	3.03	3.03	3.02	3.05	3.37	3.36	3.36	3.38	3.74	3.74	3.73	3.76	4.18	4.18	4.17	4.20
		Amps	9.0	9.0	8.9	9.0	10.2	10.2	10.2	10.3	11.7	11.6	11.6	11.7	13.2	13.2	13.2	13.3	14.9	14.9	14.9	15.0	16.9	16.9	16.9	17.0
		HI PR	255	256	258	262	294	296	297	302	336	337	339	343	381	381	382	388	429	430	432	437	481	482	484	488
	1575	LO PR	125	126	129	134	132	133	137	142	138	140	143	148	144	145	149	154	149	151	154	159	156	158	161	166
		MBh	40.8	41.4	42.5	44.4	40.4	41.0	42.2	44.0	39.4	40.0	41.2	43.0	37.6	38.2	39.4	41.2	35.4	36.0	37.2	39.0	33.5	34.0	35.2	37.0
		S/T	1.00	0.86	0.73	0.59	1.00	0.87	0.74	0.59	1.00	0.90	0.76	0.62	1.00	1.00	0.78	0.64	1.00	1.00	0.80	0.66	1.00	1.00	0.85	0.71
85	1300	ΔT	26	24	21	17	26	24	20	17	26	24	21	17	26	24	20	17	25	24	20	17	26	25	21	18
		kW	2.45	2.45	2.45	2.47	2.73	2.73	2.72	2.74	3.04	3.04	3.03	3.05	3.37	3.37	3.37	3.39	3.75	3.75	3.74	3.76	4.19	4.19	4.18	4.20
		Amps	9.0	9.0	9.0	9.1	10.3	10.3	10.2	10.3	11.7	11.7	11.7	11.8	13.2	13.2	13.2	13.3	14.9	14.9	14.9	15.0	16.9	16.9	16.9	17.0
	1400	HI PR	256	257	259	263	296	297	299	303	337	338	340	345	382	383	385	389	431	432	433	438	482	483	485	489
		LO PR	126	127	130	136	133	135	138	143	140	141	144	150	145	147	150	155	151	152	155	160	157	159	162	167
		MBh	41.6	42.1	43.3	45.1	41.2	41.8	43.0	44.8	40.2	40.7	41.9	43.7	38.4	38.9	40.1	41.9	36.2	36.8	38.0	39.8	34.2	34.8	36.0	37.8
	1575	S/T	1.00	0.88	0.75	0.61	1.00	0.89	0.76	0.61	1.00	0.92	0.78	0.64	1.00	1.00	0.80	0.66	1.00	1.00	0.82	0.68	1.00	1.00	0.87	0.73
		ΔT	25	23	20	16	25	23	20	16	25	23	20	16	25	23	20	16	24	23	19	16	26	24	20	17
		kW	2.46	2.46	2.46	2.48	2.74	2.74	2.73	2.76	3.05	3.05	3.04	3.07	3.39	3.38	3.38	3.40	3.76	3.76	3.75	3.78	4.20	4.20	4.19	4.21
1300	Amps	9.1	9.0	9.0	9.1	10.3	10.3	10.3	10.4	11.7	11.7	11.7	11.8	13.3	13.3	13.2	13.3	15.0	15.0	15.0	15.1	17.0	17.0	17.0	17.1	
	HI PR	258	259	261	266	298	299	301	305	340	341	342	347	384	386	387	392	433	434	436	440	484	485	487	492	
	LO PR	128	130	133	138	135	137	140	145	142	144	147	152	148	149	152	157	153	154	158	163	160	161	164	169	
85	1300	MBh	41.1	41.7	42.8	44.7	40.7	41.3	42.5	44.3	39.7	40.3	41.5	43.3	37.9	38.5	39.7	41.5	35.7	36.3	37.5	39.3	33.8	34.3	35.5	37.3
		S/T	1.00	0.94	0.81	0.66	1.00	0.95	0.81	0.67	1.00	1.00	0.84	0.70	1.00	1.00	0.86	0.71	1.00	1.00	0.88	0.74	1.00	1.00	1.00	0.79
		ΔT	30	28	25	21	30	28	25	21	30	28	25	21	29	27	24	20	29	28	24	21	31	29	25	22
	1400	kW	2.45	2.45	2.44	2.46	2.73	2.73	2.72	2.74	3.04	3.03	3.03	3.05	3.37	3.37	3.37	3.39	3.75	3.74	3.74	3.76	4.19	4.18	4.18	4.20
		Amps	9.0	9.0	9.0	9.1	10.3	10.3	10.2	10.3	11.7	11.7	11.6	11.7	13.2	13.2	13.2	13.3	14.9	14.9	14.9	15.0	16.9	16.9	16.9	17.0
		HI PR	256	257	259	263	296	297	299	303	337	338	340	345	382	383	385	389	430	432	433	438	482	483	485	489
	1575	LO PR	126	128	131	136	134	135	138	144	140	142	145	150	146	147	150	156	151	153	156	161	158	159	163	168
		MBh	41.5	42.0	43.2	45.0	41.1	41.7	42.9	44.7	40.1	40.6	41.8	43.6	38.3	38.9	40.0	41.9	36.1	36.7	37.9	39.7	34.1	34.7	35.9	37.7
		S/T	1.00	0.97	0.83	0.69	1.00	1.00	0.84	0.69	1.00	1.00	0.86	0.72	1.00	1.00	0.88	0.74	1.00	1.00	0.90	0.76	1.00	1.00	1.00	0.81
1300	ΔT	29	27	24	21	29	27	24	21	29	28	24	21	29	27	24	20	29	27	24	20	30	28	25	21	
	kW	2.46	2.46	2.45	2.47	2.74	2.73	2.73	2.75	3.04	3.04	3.04	3.06	3.38	3.38	3.37	3.39	3.75	3.75	3.75	3.77	4.19	4.19	4.19	4.21	
	Amps	9.0	9.0	9.0	9.1	10.3	10.3	10.3	10.4	11.7	11.7	11.7	11.8	13.2	13.2	13.2	13.3	15.0	15.0	14.9	15.0	17.0	17.0	16.9	17.0	
1400	HI PR	257	258	260	264	297	298	300	304	339	340	341	346	383	384	386	391	432	433	435	439	483	484	486	491	
	LO PR	128	129	132	137	135	137	140	145	142	143	146	151	147	149	152	157	152	154	157	162	159	161	164	169	
	MBh	42.2	42.8	44.0	45.8	41.9	42.4	43.6	45.4	40.8	41.4	42.6	44.4	39.1	39.6	40.8	42.6	36.9	37.4	38.6	40.4	34.9	35.4	36.6	38.4	
1575	S/T	1.00	0.99	0.85	0.71	1.00	1.00	0.86	0.71	1.00	1.00	0.88	0.74	1.00	1.00	0.90	0.76	1.00	1.00	0.92	0.78	1.00	1.00	1.00	0.83	
	ΔT	28	26	23	20	28	26	23	20	28	27	23	20	28	26	23	20	28	26	23	20	29	27	24	20	
	kW	2.47	2.47	2.46	2.48	2.75	2.74	2.74	2.76	3.06	3.05	3.05	3.07	3.39	3.39	3.38	3.41	3.77	3.76	3.76	3.78	4.21	4.20	4.20	4.22	
1300	Amps	9.1	9.1	9.1	9.1	10.4	10.3	10.3	10.4	11.8	11.8	11.7	11.8	13.3	13.3	13.3	13.4	15.0	15.0	15.0	15.1	17.0	17.0	17.0	17.1	
	HI PR	259	261	262	267	299	300	302	306	341	342	344	348	386	387	389	393	434	435	437	441	486	487	488	493	
	LO PR	130	131	135	140	137	139	142	147	144	145	148	154	149	151	154	159	155	156	159	165	162	163	166	171	

IDB: Entering Indoor Dry Bulb Temperature
 High and low pressures are measured at the liquid and suction service valves.
 Shaded area reflects AHRI Rating Conditions.
 kW = Total system power
 Amps = Outdoor unit amps (compressor + fan)

IDB	AIRFLOW	OUTDOOR AMBIENT TEMPERATURE																									
		65°F				75°F				85°F				95°F				105°F				115°F					
		59	63	67	71	59	63	67	71	59	63	67	71	59	63	67	71	59	63	67	71	59	63	67	71		
70	1400	MBh	45.9	46.5	47.9	-	45.5	46.1	47.5	-	44.3	44.9	46.3	-	42.2	42.9	44.2	-	39.7	40.4	41.7	-	37.4	38.1	39.4	-	
		S/T	0.64	0.56	0.42	-	0.65	0.57	0.43	-	0.67	0.59	0.45	-	0.69	0.61	0.47	-	1.00	0.64	0.50	-	1.00	0.69	0.55	-	
		ΔT	19	17	14	-	19	17	14	-	19	17	14	-	19	17	14	-	19	17	14	-	20	18	15	-	
	1560	kW	2.78	2.78	2.78	-	3.11	3.10	3.10	-	3.46	3.46	3.46	-	3.85	3.85	3.84	-	4.28	4.28	4.28	-	4.79	4.79	4.78	-	
		Amps	10.2	10.2	10.2	-	11.7	11.7	11.6	-	13.3	13.3	13.3	-	15.1	15.1	15.0	-	17.1	17.0	17.0	-	19.4	19.4	19.3	-	
		HI/PR	256	257	259	-	296	297	299	-	338	339	341	-	384	385	387	-	433	434	436	-	485	486	488	-	
	1800	LO/PR	122	124	127	-	130	131	134	-	136	138	141	-	142	143	146	-	147	149	152	-	154	156	159	-	
		MBh	46.4	47.0	48.4	-	46.0	46.6	48.0	-	44.8	45.4	46.8	-	42.7	43.4	44.7	-	40.2	40.9	42.2	-	37.9	38.6	39.9	-	
		S/T	0.69	0.61	0.47	-	0.69	0.62	0.48	-	0.72	0.64	0.50	-	1.00	0.66	0.52	-	1.00	0.69	0.54	-	1.00	0.74	0.60	-	
	75	1400	ΔT	18	16	13	-	18	16	13	-	18	16	13	-	18	16	13	-	18	16	13	-	19	17	14	-
			kW	2.82	2.81	2.81	-	3.14	3.14	3.13	-	3.48	3.48	3.47	-	3.87	3.86	3.86	-	4.30	4.30	4.29	-	4.80	4.80	4.80	-
			Amps	10.3	10.3	10.3	-	11.8	11.8	11.8	-	13.4	13.4	13.3	-	15.1	15.1	15.1	-	17.1	17.1	17.1	-	19.4	19.4	19.4	-
1560		HI/PR	260	261	263	-	300	302	303	-	343	344	346	-	388	389	391	-	437	438	440	-	489	491	492	-	
		LO/PR	126	128	131	-	134	135	138	-	140	142	145	-	146	147	150	-	151	153	156	-	158	159	163	-	
		MBh	47.3	47.9	49.3	-	46.9	47.5	48.9	-	45.7	46.3	47.7	-	43.6	44.3	45.6	-	41.1	41.8	43.1	-	38.8	39.5	40.8	-	
1800		S/T	0.73	0.65	0.51	-	0.73	0.66	0.52	-	0.76	0.68	0.54	-	1.00	0.70	0.56	-	1.00	0.72	0.58	-	1.00	0.78	0.64	-	
		ΔT	17	15	12	-	17	15	12	-	17	15	12	-	17	15	12	-	17	15	12	-	18	16	13	-	
		kW	2.82	2.81	2.81	-	3.14	3.14	3.13	-	3.50	3.49	3.49	-	3.88	3.88	3.87	-	4.31	4.31	4.31	-	4.82	4.82	4.81	-	
75		1400	Amps	10.2	10.2	10.2	-	11.7	11.6	11.7	-	13.3	13.3	13.4	-	15.1	15.1	15.0	-	17.0	17.0	17.0	-	19.4	19.4	19.3	-
			HI/PR	256	257	259	263	296	297	299	304	339	340	341	346	384	385	387	391	433	434	436	440	485	486	488	493
			LO/PR	122	124	127	132	130	131	134	140	136	138	141	146	142	143	146	152	147	149	152	157	154	156	159	164
	1560	MBh	46.4	47.1	48.4	50.5	46.0	46.6	48.0	50.1	44.8	45.5	46.8	48.9	42.7	43.4	44.8	46.9	40.2	40.9	42.2	44.3	37.9	38.6	40.0	42.0	
		S/T	0.82	0.74	0.60	0.46	0.83	0.75	0.61	0.46	1.00	0.78	0.64	0.49	1.00	0.75	0.61	0.51	1.00	0.82	0.68	0.53	1.00	1.00	0.73	0.58	
		ΔT	22	20	17	13	22	20	17	13	22	20	17	14	22	20	17	13	22	20	17	13	23	21	18	14	
	1800	kW	2.80	2.80	2.79	2.81	3.12	3.12	3.11	3.14	3.48	3.47	3.47	3.49	3.86	3.86	3.86	3.88	4.30	4.29	4.29	4.31	4.80	4.80	4.79	4.82	
		Amps	10.3	10.2	10.2	10.3	11.7	11.7	11.7	11.8	13.4	13.3	13.3	13.4	15.1	15.1	15.1	15.2	17.1	17.1	17.1	17.2	19.4	19.4	19.4	19.5	
		HI/PR	258	259	261	265	298	299	301	305	340	341	343	348	386	387	389	393	435	436	438	442	487	488	490	494	
	1800	LO/PR	124	125	129	134	131	133	136	141	138	139	142	148	143	148	150	156	149	150	153	159	156	157	160	165	
		MBh	47.3	48.0	49.3	51.4	46.9	47.6	48.9	51.0	45.7	46.4	47.7	49.8	43.7	44.3	45.7	47.8	41.1	41.8	43.2	45.2	38.8	39.5	40.9	43.0	
		S/T	0.86	0.78	0.64	0.50	1.00	0.79	0.65	0.50	1.00	0.82	0.68	0.53	1.00	0.84	0.70	0.55	1.00	0.86	0.72	0.57	1.00	1.00	0.77	0.62	
1800	ΔT	21	19	16	12	21	19	16	12	21	19	16	13	21	19	16	12	21	19	15	12	22	20	17	13		
	kW	2.82	2.81	2.81	2.83	3.14	3.13	3.13	3.15	3.49	3.49	3.49	3.51	3.88	3.88	3.87	3.90	4.31	4.31	4.30	4.33	4.82	4.82	4.81	4.84		
	Amps	10.3	10.3	10.3	10.4	11.8	11.8	11.8	11.9	13.4	13.4	13.4	13.5	15.2	15.2	15.2	15.3	17.2	17.2	17.1	17.3	19.5	19.5	19.5	19.6		
1800	HI/PR	260	261	263	268	301	302	304	308	343	344	346	350	388	389	391	396	437	438	440	445	490	491	493	497		
	LO/PR	126	128	131	136	134	135	138	144	140	142	145	150	146	147	150	156	151	153	156	161	158	159	163	168		
	MBh	47.3	48.0	49.3	51.4	46.9	47.6	48.9	51.0	45.7	46.4	47.7	49.8	43.7	44.3	45.7	47.8	41.1	41.8	43.2	45.2	38.8	39.5	40.9	43.0		

IDB: Entering Indoor Dry Bulb Temperature
 High and low pressures are measured at the liquid and suction service valves.
 Shaded area reflects ACCA (TVA) Rating Conditions.
 Amps = Outdoor unit amps (compressor + fan)
 kW = Total system power

IDB		OUTDOOR AMBIENT TEMPERATURE												105°F												115°F																																																																																																																																
		65°F						75°F						85°F						95°F						105°F						115°F																																																																																																																										
		59	63	67	71	75	79	59	63	67	71	75	79	59	63	67	71	75	79	59	63	67	71	75	79	59	63	67	71	75	79	59	63	67	71	75	79																																																																																																																					
		AIRFLOW												ENTERING INDOOR WET BULB TEMPERATURE																																																																																																																																												
80	1400	MBh	46.1	46.8	48.2	50.2	45.7	46.4	47.8	49.8	44.5	45.2	46.6	48.6	42.5	43.1	44.5	46.6	40.0	40.6	42.0	44.1	37.7	38.3	39.7	41.8	Delta T	1.00	0.82	0.68	0.54	1.00	0.83	0.69	0.54	1.00	0.86	0.72	0.57	1.00	0.88	0.74	0.59	1.00	1.00	1.00	0.76	0.61	1.00	1.00	0.81	0.66	KW	2.79	2.78	2.78	2.80	3.11	3.10	3.10	3.12	3.46	3.46	3.46	3.48	3.85	3.85	3.84	3.87	4.28	4.28	4.28	4.28	4.30	4.79	4.79	4.78	4.81	AMPS	10.2	10.2	10.2	10.3	11.7	11.7	11.6	11.7	13.3	13.3	13.3	13.4	15.1	15.1	15.0	15.1	17.1	17.0	17.0	17.0	17.1	19.4	19.4	19.3	19.4	HI PR	256	258	259	264	297	298	300	304	333	340	342	346	384	386	387	392	433	435	436	441	486	487	489	493	LO PR	123	124	128	133	130	132	135	140	137	138	142	147	142	144	147	152	148	149	152	158	155	156	159	164
		1560	MBh	46.6	47.3	48.7	50.8	46.2	46.9	48.3	50.3	45.0	45.7	47.1	49.1	43.0	43.6	45.0	47.1	40.5	41.1	42.5	44.6	38.2	38.8	40.2	42.3	Delta T	1.00	0.87	0.73	0.59	1.00	0.88	0.74	0.59	1.00	0.91	0.77	0.62	1.00	1.00	0.79	0.64	1.00	1.00	1.00	0.81	0.66	1.00	1.00	0.86	0.71	KW	2.80	2.80	2.79	2.82	3.12	3.12	3.11	3.14	3.48	3.48	3.47	3.49	3.86	3.86	3.86	3.88	4.30	4.29	4.29	4.31	4.80	4.80	4.80	4.82	AMPS	10.3	10.2	10.2	10.3	11.7	11.7	11.7	11.8	13.4	13.4	13.3	13.4	15.1	15.1	15.1	15.2	17.1	17.1	17.1	17.2	19.4	19.4	19.4	19.5	HI PR	258	259	261	266	299	300	301	306	341	342	344	348	386	387	389	394	435	436	438	443	488	489	490	495	LO PR	124	126	129	134	132	133	136	142	138	140	143	148	144	145	149	154	149	151	154	159	156	158	161	166	
		1800	MBh	47.6	48.2	49.6	51.7	47.1	47.8	49.2	51.2	46.0	46.6	48.0	50.1	43.9	44.5	45.9	48.0	41.4	42.0	43.4	45.5	39.1	39.7	41.1	43.2	Delta T	1.00	0.91	0.77	0.62	1.00	0.92	0.78	0.63	1.00	0.95	0.80	0.66	1.00	1.00	0.82	0.68	1.00	1.00	1.00	0.85	0.70	1.00	1.00	0.90	0.75	KW	2.82	2.81	2.81	2.83	3.14	3.13	3.13	3.15	3.49	3.49	3.49	3.51	3.88	3.88	3.87	3.90	4.31	4.31	4.31	4.33	4.82	4.82	4.81	4.84	AMPS	10.3	10.3	10.3	10.4	11.8	11.8	11.8	11.9	13.4	13.4	13.4	13.5	15.2	15.2	15.2	15.3	17.2	17.2	17.2	17.3	19.5	19.5	19.5	19.6	HI PR	261	262	264	268	301	302	304	308	343	344	346	351	389	390	392	396	438	439	441	445	490	491	493	498	LO PR	127	128	132	137	134	136	139	144	141	142	145	151	146	148	151	156	152	153	156	162	159	160	163	168	
	85	1400	MBh	46.9	47.6	48.9	51.0	46.5	47.2	48.5	50.6	45.3	46.0	47.3	49.4	43.3	43.9	45.3	47.4	40.7	41.4	42.8	44.8	38.4	39.1	40.5	42.6	Delta T	1.00	0.93	0.79	0.64	1.00	0.94	0.80	0.65	1.00	1.00	0.82	0.67	1.00	1.00	0.84	0.69	1.00	1.00	1.00	0.86	0.72	1.00	1.00	0.81	0.77	KW	2.79	2.79	2.78	2.81	3.11	3.11	3.11	3.13	3.47	3.47	3.46	3.49	3.86	3.86	3.85	3.87	4.29	4.29	4.29	4.31	4.80	4.80	4.79	4.81	AMPS	10.2	10.2	10.2	10.3	11.7	11.7	11.7	11.8	13.3	13.3	13.3	13.4	15.1	15.1	15.1	15.2	17.1	17.1	17.1	17.2	19.4	19.4	19.4	19.5	HI PR	258	259	261	265	298	299	301	305	340	341	343	348	386	387	389	393	435	436	438	442	487	488	490	494	LO PR	125	126	129	135	132	134	137	142	139	140	143	149	144	146	149	154	150	151	154	159	156	158	161	166	
			1560	MBh	47.4	48.1	49.4	51.5	47.0	47.7	49.0	51.1	45.8	46.5	47.8	49.9	43.8	44.4	45.8	47.9	41.2	41.9	43.3	45.3	38.9	39.6	41.0	43.1	Delta T	1.00	0.98	0.84	0.69	1.00	0.98	0.84	0.70	1.00	1.00	0.87	0.72	1.00	1.00	0.89	0.74	1.00	1.00	1.00	0.91	0.77	1.00	1.00	0.82	0.82	KW	2.81	2.80	2.80	2.82	3.13	3.12	3.12	3.14	3.48	3.48	3.48	3.50	3.87	3.87	3.86	3.89	4.30	4.30	4.30	4.32	4.81	4.81	4.80	4.83	AMPS	10.3	10.3	10.3	10.4	11.8	11.7	11.7	11.8	13.4	13.4	13.4	13.5	15.2	15.2	15.1	15.2	17.1	17.1	17.1	17.2	19.5	19.5	19.4	19.5	HI PR	259	261	262	267	300	301	303	307	342	343	345	349	387	389	390	395	436	438	439	444	489	490	492	496	LO PR	126	128	131	136	134	135	138	144	140	142	145	150	146	147	150	156	151	153	156	161	158	159	162	168
			1800	MBh	48.3	49.0	50.3	52.4	47.9	48.6	49.9	52.0	46.7	47.4	48.7	50.8	44.7	45.3	46.7	48.8	42.2	42.8	44.2	46.3	39.9	40.5	41.9	44.0	Delta T	1.00	1.00	0.88	0.73	1.00	1.00	0.88	0.74	1.00	1.00	0.91	0.76	1.00	1.00	0.93	0.78	1.00	1.00	1.00	0.95	0.80	1.00	1.00	0.86	0.86	KW	2.82	2.82	2.82	2.84	3.14	3.14	3.14	3.16	3.50	3.50	3.49	3.52	3.89	3.89	3.88	3.90	4.32	4.32	4.32	4.34	4.83	4.82	4.82	4.84	AMPS	10.4	10.4	10.3	10.4	11.8	11.8	11.8	11.9	13.5	13.5	13.4	13.5	15.2	15.2	15.2	15.3	17.2	17.2	17.2	17.3	19.5	19.5	19.5	19.6	HI PR	262	263	265	269	302	303	305	310	345	346	347	352	390	391	393	397	439	440	442	446	491	492	494	499	LO PR	129	130	133	139	136	138	141	146	143	144	147	153	148	150	153	158	154	155	158	163	160	162	165	170

IDB: Entering Indoor Dry Bulb Temperature
 High and low pressures are measured at the liquid and suction service valves.
 Shaded area reflects AHRI Rating Conditions.
 kW = Total system power
 Amps = Outdoor unit amps (compressor + fan)

IDB	AIRFLOW	OUTDOOR AMBIENT TEMPERATURE																																			
		65°F						75°F						85°F						95°F						105°F						115°F					
		59	63	67	71	71	59	63	67	71	71	59	63	67	71	71	59	63	67	71	71	59	63	67	71	71	59	63	67	71	71						
70	1400	MBh	45.9	46.5	47.9	-	45.5	46.1	47.5	-	44.3	44.9	46.3	-	42.2	42.9	44.2	-	39.8	40.4	41.8	-	37.5	38.1	39.5	-											
		S/T	0.66	0.59	0.45	-	0.67	0.59	0.46	-	0.69	0.62	0.48	-	0.71	0.64	0.50	-	1.00	0.66	0.52	-	1.00	0.71	0.57	-											
	ΔT	19	17	14	-	19	17	14	-	19	17	14	-	19	17	14	-	19	17	13	-	20	18	15	-												
	kW	2.69	2.69	2.69	-	3.01	3.01	3.00	-	3.36	3.36	3.35	-	3.74	3.74	3.73	-	4.16	4.16	4.15	-	4.66	4.66	4.65	-												
	Amps	9.9	9.9	9.8	-	11.3	11.3	11.3	-	12.9	12.9	12.9	-	14.7	14.6	14.6	-	16.6	16.6	16.6	-	18.9	18.9	18.8	-												
	HI/PR	249	250	252	-	288	289	290	-	328	330	331	-	372	373	375	-	420	421	423	-	470	471	473	-												
LO/PR	121	122	125	-	128	129	132	-	134	136	139	-	140	141	144	-	145	146	149	-	151	153	156	-													
70	1600	MBh	46.7	47.3	48.7	-	46.3	46.9	48.3	-	45.1	45.7	47.1	-	43.1	43.7	45.1	-	40.6	41.2	42.6	-	38.3	39.0	40.3	-											
		S/T	0.70	0.62	0.49	-	0.70	0.63	0.49	-	0.73	0.65	0.52	-	0.75	0.67	0.54	-	1.00	0.69	0.56	-	1.00	0.75	0.61	-											
	ΔT	18	16	13	-	18	16	13	-	18	16	13	-	18	16	13	-	18	16	12	-	19	17	13	-												
	kW	2.71	2.71	2.70	-	3.02	3.02	3.02	-	3.37	3.37	3.37	-	3.75	3.75	3.75	-	4.18	4.18	4.17	-	4.68	4.67	4.67	-												
	Amps	9.9	9.9	9.9	-	11.4	11.4	11.3	-	13.0	13.0	13.0	-	14.7	14.7	14.7	-	16.7	16.7	16.6	-	18.9	18.9	18.9	-												
	HI/PR	251	252	254	-	290	291	293	-	331	332	334	-	375	376	377	-	422	423	425	-	473	474	475	-												
LO/PR	123	124	127	-	130	132	135	-	136	138	141	-	142	143	146	-	147	149	152	-	154	155	158	-													
1800	1800	MBh	47.7	48.4	49.7	-	47.3	47.9	49.3	-	46.1	46.8	48.1	-	44.1	44.7	46.1	-	41.6	42.2	43.6	-	39.3	40.0	41.3	-											
		S/T	0.71	0.63	0.50	-	0.71	0.64	0.50	-	0.74	0.66	0.53	-	1.00	0.68	0.55	-	1.00	0.70	0.57	-	1.00	0.75	0.62	-											
	ΔT	17	15	12	-	17	15	12	-	17	15	12	-	17	15	12	-	17	15	11	-	18	16	13	-												
	kW	2.72	2.72	2.71	-	3.04	3.03	3.03	-	3.39	3.39	3.38	-	3.77	3.77	3.76	-	4.19	4.19	4.18	-	4.69	4.69	4.68	-												
	Amps	10.0	10.0	10.0	-	11.4	11.4	11.4	-	13.1	13.0	13.0	-	14.8	14.8	14.8	-	16.7	16.7	16.7	-	19.0	19.0	19.0	-												
	HI/PR	253	255	256	-	292	293	295	-	333	334	336	-	377	378	380	-	424	426	427	-	475	476	478	-												
LO/PR	125	127	130	-	133	134	137	-	139	141	144	-	144	146	149	-	150	151	154	-	156	158	161	-													

	AIRFLOW	OUTDOOR AMBIENT TEMPERATURE																																			
		65°F						75°F						85°F						95°F						105°F						115°F					
		59	63	67	71	71	59	63	67	71	71	59	63	67	71	71	59	63	67	71	71	59	63	67	71	71	59	63	67	71	71						
1400	1400	MBh	45.9	46.5	47.9	50.0	45.5	46.1	47.5	49.5	44.3	44.9	46.3	48.4	42.3	42.9	44.3	46.3	39.8	40.4	41.8	43.8	37.5	38.2	39.5	41.6											
		S/T	0.79	0.71	0.58	0.44	0.80	0.72	0.59	0.44	1.00	0.75	0.61	0.47	1.00	0.76	0.63	0.49	1.00	0.79	0.65	0.51	1.00	0.84	0.70	0.56											
	ΔT	23	21	18	14	23	21	18	14	23	21	18	14	23	21	18	14	23	21	17	14	24	22	19	15												
	kW	2.69	2.69	2.68	2.71	3.01	3.00	3.00	3.02	3.36	3.35	3.35	3.37	3.74	3.74	3.73	3.73	3.75	4.16	4.16	4.15	4.18	4.66	4.66	4.65	4.67											
	Amps	9.9	9.9	9.8	9.9	11.3	11.3	11.3	11.4	12.9	12.9	12.9	13.0	14.6	14.6	14.6	14.7	16.6	16.6	16.6	16.7	18.9	18.9	18.8	18.9												
	HI/PR	249	250	252	256	288	289	291	295	329	330	331	336	373	374	375	380	420	421	423	427	470	472	473	478												
LO/PR	121	122	125	130	128	129	132	137	134	136	139	144	140	141	144	149	145	146	149	154	151	153	156	161													
1600	1600	MBh	46.7	47.4	48.7	50.8	46.3	47.0	48.3	50.4	45.1	45.8	47.1	49.2	43.1	43.7	45.1	47.2	40.6	41.3	42.6	44.7	38.3	39.0	40.3	42.4											
		S/T	0.83	0.75	0.62	0.47	0.83	0.76	0.62	0.48	1.00	0.78	0.65	0.51	1.00	0.80	0.67	0.52	1.00	0.82	0.69	0.55	1.00	1.00	0.74	0.60											
	ΔT	22	20	17	13	22	20	17	13	22	20	17	13	22	20	17	13	22	20	16	13	23	21	18	14												
	kW	2.71	2.70	2.70	2.72	3.02	3.02	3.01	3.04	3.37	3.37	3.36	3.39	3.75	3.75	3.75	3.74	3.77	4.18	4.17	4.17	4.19	4.67	4.67	4.67	4.69											
	Amps	9.9	9.9	9.9	10.0	11.4	11.4	11.3	11.4	13.0	13.0	12.9	13.1	14.7	14.7	14.7	14.8	16.7	16.6	16.6	16.7	18.9	18.9	18.9	19.0												
	HI/PR	251	252	254	258	290	291	293	297	331	332	334	338	375	376	378	382	422	423	425	429	473	474	476	480												
LO/PR	123	124	127	132	130	132	135	140	137	138	141	146	142	143	146	151	147	149	152	157	154	155	158	163													
1800	1800	MBh	47.7	48.4	49.7	51.8	47.3	48.0	49.3	51.4	46.2	46.8	48.1	50.2	44.1	44.8	46.1	48.2	41.6	42.3	43.6	45.7	39.4	40.0	41.4	43.4											
		S/T	0.83	0.76	0.62	0.48	0.84	0.76	0.63	0.49	1.00	0.79	0.65	0.51	1.00	0.81	0.67	0.53	1.00	0.83	0.70	0.55	1.00	1.00	0.75	0.61											
	ΔT	21	19	16	12	21	19	16	12	21	19	16	12	21	19	16	12	21	19	15	12	22	20	17	13												
	kW	2.72	2.72	2.71	2.74	3.03	3.03	3.03	3.05	3.39	3.38	3.38	3.40	3.77	3.76	3.76	3.78	4.19	4.19	4.18	4.21	4.69	4.69	4.68	4.70												
	Amps	10.0	10.0	10.0	10.1	11.4	11.4	11.4	11.5	13.0	13.0	13.0	13.1	14.8	14.8	14.7	14.9	16.7	16.7	16.7	16.8	19.0	19.0	19.0	19.1												
	HI/PR	254	255	257	261	293	294	295	300	333	334	336	341	377	378	380	384	425	426	427	432	475	476	478	482												
LO/PR	126	127	130	135	133	134	137	142	139	141	144	149	144	146	149	154	150	151	154	159	156	158	161	166													

IDB: Entering Indoor Dry Bulb Temperature
 High and low pressures are measured at the liquid and suction service valves.
 Shaded area reflects ACCA (TVA) Rating Conditions.
 Amps = Outdoor unit amps (compressor + fan)
 kW = Total system power

GSZ140181K* / ARUF25B14A*+TXV

	OUTDOOR AMBIENT TEMPERATURE																
	65	60	55	50	47	45	40	35	30	25	20	17	15	10	5	0	-5
MBh	23.71	22.11	20.54	18.99	18.00	17.25	15.37	13.65	12.25	11.21	10.42	10.00	9.47	8.13	6.80	5.47	4.13
T/R	21.11	19.88	18.64	17.41	16.67	15.97	14.23	12.64	11.34	10.38	9.65	9.26	8.77	7.53	6.30	5.06	3.83
kW	1.51	1.48	1.45	1.42	1.40	1.39	1.36	1.33	1.30	1.27	1.24	1.22	1.21	1.18	1.15	1.12	1.09
Amps	7.2	6.6	6.1	5.7	5.5	5.3	5.0	4.7	4.4	4.2	4.0	3.8	3.8	3.5	3.3	3.0	2.7
COP	4.60	4.37	4.15	3.92	3.76	3.63	3.31	3.01	2.76	2.59	2.46	2.40	2.29	2.02	1.74	1.43	1.11

GSZ140241K* / ARUF25B14A*+TXV

	OUTDOOR AMBIENT TEMPERATURE																
	65	60	55	50	47	45	40	35	30	25	20	17	15	10	5	0	-5
MBh	30.74	28.63	26.55	24.50	23.20	22.20	19.70	17.43	15.59	14.20	13.16	12.60	11.89	10.13	8.36	6.59	4.83
T/R	27.37	25.74	24.10	22.46	21.48	20.55	18.24	16.14	14.43	13.15	12.18	11.67	11.01	9.38	7.74	6.10	4.47
kW	1.97	1.93	1.88	1.84	1.81	1.79	1.75	1.70	1.66	1.61	1.57	1.54	1.52	1.48	1.43	1.39	1.34
Amps	9.1	8.4	7.8	7.2	6.9	6.7	6.3	5.9	5.6	5.3	5.0	4.8	4.7	4.4	4.1	3.7	3.3
COP	4.57	4.36	4.14	3.91	3.76	3.63	3.31	3.00	2.76	2.58	2.46	2.40	2.29	2.01	1.71	1.39	1.05

GSZ140301K* / ARUF29B14 + TXV**

	OUTDOOR AMBIENT TEMPERATURE																
	65	60	55	50	47	45	40	35	30	25	20	17	15	10	5	0	-5
MBh	37.15	34.70	32.29	29.92	28.40	27.27	24.40	21.77	19.62	18.03	16.84	16.20	15.39	13.35	11.32	9.29	7.25
T/R	33.08	31.19	29.31	27.43	26.30	25.25	22.59	20.16	18.17	16.69	15.59	15.00	14.25	12.36	10.48	8.60	6.71
kW	2.48	2.42	2.37	2.31	2.27	2.25	2.19	2.14	2.08	2.02	1.96	1.93	1.90	1.85	1.79	1.73	1.67
Amps	11.9	10.9	10.1	9.4	9.0	8.8	8.3	7.8	7.4	7.0	6.6	6.4	6.2	5.8	5.4	5.0	4.5
COP	4.39	4.19	4.00	3.80	3.66	3.55	3.26	2.99	2.77	2.62	2.51	2.46	2.37	2.12	1.85	1.57	1.27

GSZ140361K* / ARUF37C14 + TXV**

	OUTDOOR AMBIENT TEMPERATURE																
	65	60	55	50	47	45	40	35	30	25	20	17	15	10	5	0	-5
MBh	42.72	39.94	37.21	34.52	32.80	31.52	28.28	25.30	22.87	21.06	19.72	19.00	18.08	15.78	13.48	11.18	8.88
T/R	38.04	35.91	33.78	31.65	30.37	29.19	26.19	23.43	21.17	19.50	18.26	17.59	16.74	14.61	12.48	10.35	8.22
kW	2.81	2.76	2.71	2.66	2.63	2.61	2.56	2.50	2.45	2.40	2.35	2.32	2.30	2.25	2.20	2.15	2.10
Amps	13.6	12.5	11.6	10.8	10.3	10.0	9.4	8.9	8.4	7.9	7.5	7.3	7.1	6.6	6.2	5.7	5.1
COP	4.46	4.24	4.03	3.81	3.66	3.55	3.24	2.96	2.73	2.57	2.46	2.40	2.30	2.06	1.80	1.53	1.24

GSZ140421K* /ARUF43C14 + TXV**

	OUTDOOR AMBIENT TEMPERATURE																
	65	60	55	50	47	45	40	35	30	25	20	17	15	10	5	0	-5
MBh	51.58	48.34	45.15	42.02	40.00	38.54	34.80	31.31	28.47	26.37	24.83	24.00	22.93	20.27	17.60	14.93	12.27
T/R	45.93	43.46	40.99	38.52	37.04	35.69	32.22	28.99	26.36	24.42	22.99	22.22	21.23	18.76	16.30	13.83	11.36
kW	3.41	3.34	3.27	3.21	3.17	3.14	3.08	3.01	2.94	2.88	2.81	2.77	2.74	2.68	2.61	2.54	2.48
Amps	16.4	15.1	14.0	13.0	12.4	12.1	11.4	10.7	10.1	9.5	9.0	8.7	8.5	8.0	7.4	6.8	6.1
COP	4.44	4.24	4.04	3.84	3.70	3.60	3.32	3.05	2.84	2.69	2.59	2.54	2.45	2.22	1.98	1.72	1.45

Calculations are based on nominal CFM and 70°F indoor dry bulb.

Amps = Outdoor unit amps (comp.+fan)

Note: Shaded area is AHRI Rating Conditions at 47°F outdoor ambient temperature.

kW = Total system power

GSZ140421K* - ARUF43D14A*+TXV

	OUTDOOR AMBIENT TEMPERATURE																
	65	60	55	50	47	45	40	35	30	25	20	17	15	10	5	0	-5
MBh	51.58	48.34	45.15	42.02	40.00	38.54	34.80	31.31	28.47	26.37	24.83	24.00	22.93	20.27	17.60	14.93	12.27
T/R	45.93	43.46	40.99	38.52	37.04	35.69	32.22	28.99	26.36	24.42	22.99	22.22	21.23	18.76	16.30	13.83	11.36
kW	3.41	3.34	3.27	3.21	3.17	3.14	3.08	3.01	2.94	2.88	2.81	2.77	2.74	2.68	2.61	2.54	2.48
Amps	16.5	15.2	14.0	13.0	12.5	12.2	11.4	10.7	10.2	9.6	9.1	8.8	8.6	8.0	7.5	6.8	6.1
COP	4.44	4.24	4.04	3.84	3.70	3.60	3.32	3.05	2.84	2.69	2.59	2.54	2.45	2.22	1.98	1.72	1.45

GSZ140481K* - ARUF61D14A*+TXV

	OUTDOOR AMBIENT TEMPERATURE																
	65	60	55	50	47	45	40	35	30	25	20	17	15	10	5	0	-5
MBh	56.58	53.20	49.88	46.61	44.50	42.97	39.18	35.56	32.58	30.41	28.84	28.00	26.90	24.15	21.40	18.65	15.90
T/R	50.37	47.83	45.28	42.73	41.21	39.84	36.28	32.92	30.17	28.16	26.71	25.93	24.91	22.36	19.81	17.27	14.72
kW	3.51	3.48	3.44	3.40	3.38	3.36	3.33	3.29	3.25	3.22	3.18	3.16	3.14	3.10	3.07	3.03	2.99
Amps	17.2	15.8	14.6	13.6	13.0	12.6	11.8	11.1	10.5	9.9	9.4	9.0	8.8	8.2	7.6	7.0	6.2
COP	4.72	4.49	4.25	4.02	3.86	3.74	3.45	3.17	2.94	2.77	2.66	2.60	2.51	2.28	2.04	1.80	1.56

GSZ140491K* - ARUF49C14A*+TXV

	OUTDOOR AMBIENT TEMPERATURE																
	65	60	55	50	47	45	40	35	30	25	20	17	15	10	5	0	-5
MBh	59.32	55.59	51.92	48.32	46.00	44.32	40.01	36.01	32.74	30.32	28.55	27.60	26.37	23.31	20.24	17.17	14.11
T/R	52.82	49.98	47.14	44.30	42.59	41.04	37.05	33.34	30.31	28.08	26.44	25.56	24.42	21.58	18.74	15.90	13.06
kW	3.96	3.87	3.79	3.70	3.64	3.61	3.52	3.43	3.34	3.25	3.16	3.11	3.08	2.99	2.90	2.81	2.72
Amps	19.1	17.5	16.2	15.1	14.5	14.1	13.2	12.4	11.7	11.1	10.5	10.1	9.9	9.3	8.6	7.9	7.1
COP	4.39	4.21	4.02	3.83	3.70	3.60	3.33	3.08	2.87	2.73	2.64	2.60	2.51	2.29	2.05	1.79	1.52

GSZ140601K* - ASPT61D14A*

	OUTDOOR AMBIENT TEMPERATURE																
	65	60	55	50	47	45	40	35	30	25	20	17	15	10	5	0	-5
MBh	75.71	71.04	66.44	61.91	59.00	56.89	51.54	46.52	42.41	39.39	37.18	36.00	34.47	30.63	26.80	22.97	19.13
T/R	67.41	63.86	60.31	56.76	54.63	52.70	47.72	43.07	39.27	36.47	34.43	33.33	31.91	28.36	24.81	21.26	17.71
kW	4.91	4.79	4.67	4.55	4.48	4.43	4.31	4.20	4.08	3.96	3.84	3.77	3.72	3.60	3.48	3.36	3.25
Amps	23.4	21.5	19.8	18.4	17.6	17.2	16.1	15.1	14.3	13.5	12.8	12.3	12.0	11.2	10.4	9.5	8.5
COP	4.52	4.35	4.17	3.99	3.86	3.76	3.50	3.25	3.05	2.92	2.84	2.80	2.71	2.49	2.25	2.00	1.73

Calculations are based on nominal CFM and 70°F indoor dry bulb.

Note: Shaded area is AHRI Rating Conditions at 47°F outdoor ambient temperature.

Amps = Outdoor unit amps (comp.+fan)

kW = Total system power

MODEL: DZ14SA0181K* + ARUF25B14** + TXV Conditions: 80 °F IBD, 67 °F IWB @ 610 CFM				
OUTDOOR TEM. ° F.	TOTAL BTU/H	SENSIBLE BTU/H	LATENT BTU/H	TOTAL WATTS
75	18,900	13,986	4,914	1,180
80	18,650	14,077	4,573	1,245
85	18,400	14,168	4,232	1,310
90	18,000	14,036	3,964	1,380
95	17,600	13,904	3,696	1,450
100	17,100	13,675	3,425	1,530
105	16,600	13,446	3,154	1,610
110	16,150	13,474	2,676	1,705
115	15,700	13,502	2,198	1,800
TVA Conditions @ 95° OD DB, 75° ID DB 63° ID WB				
95°	17,000	13,600	3,400	1,450

MODEL: DZ14SA0241K* + ARUF25B14** + TXV Conditions: 80 °F IBD, 67 °F IWB @ 870 CFM				
OUTDOOR TEM. ° F.	TOTAL BTU/H	SENSIBLE BTU/H	LATENT BTU/H	TOTAL WATTS
75	25,100	19,076	6,024	1,580
80	25,400	19,093	6,307	1,675
85	24,500	19,110	5,390	1,770
90	24,550	18,915	5,635	1,870
95	23,400	18,720	4,680	1,970
100	23,350	18,532	4,819	2,080
105	22,100	18,343	3,757	2,190
110	22,050	18,368	3,683	2,385
115	20,900	18,392	2,508	2,450
TVA Conditions @ 95° OD DB, 75° ID DB 63° ID WB				
95°	22,600	18,532	4,068	1,970

MODEL: DZ14SA0301K* + ARUF29B14** + TXV Conditions: 80 °F IBD, 67 °F IWB @ 870 CFM				
OUTDOOR TEM. ° F.	TOTAL BTU/H	SENSIBLE BTU/H	LATENT BTU/H	TOTAL WATTS
75	29,600	20,720	8,880	1,880
80	29,250	20,764	8,486	1,995
85	28,900	20,808	8,092	2,110
90	28,250	20,616	7,634	2,230
95	27,600	20,424	7,176	2,350
100	26,850	20,130	6,720	2,490
105	26,100	19,836	6,264	2,630
110	25,400	19,922	5,479	2,790
115	24,700	20,007	4,693	2,950
TVA Conditions @ 95° OD DB, 75° ID DB 63° ID WB				
95°	26,600	19,950	6,650	2,360

MODEL: DZ14SA0361K* + ARUF37C14** + TXV Conditions: 80 °F IBD, 67 °F IWB @ 1070 CFM				
OUTDOOR TEM. ° F.	TOTAL BTU/H	SENSIBLE BTU/H	LATENT BTU/H	TOTAL WATTS
75	37,700	26,390	11,310	2,430
80	37,250	26,443	10,807	2,575
85	36,800	26,496	10,304	2,720
90	36,000	26,272	9,728	2,880
95	35,200	26,048	9,152	3,040
100	34,200	25,640	8,560	3,220
105	33,200	25,232	7,968	3,400
110	32,300	25,333	6,967	3,610
115	31,400	25,434	5,966	3,820
TVA Conditions @ 95° OD DB, 75° ID DB 63° ID WB				
95°	33,900	25,425	8,475	3,050

MODEL: DZ14SA0421K* + ARUF43C14** + TXV				
Conditions: 80 °F IBD, 67 °F IWB @ 1300 CFM				
OUTDOOR TEM. ° F.	TOTAL BTU/H	SENSIBLE BTU/H	LATENT BTU/H	TOTAL WATTS
75	41,800	29,678	12,122	2,720
80	41,300	29,935	11,365	2,870
85	40,800	30,192	10,608	3,020
90	39,900	29,916	9,984	3,190
95	39,000	29,640	9,360	3,360
100	37,900	29,172	8,728	3,545
105	36,800	28,704	8,096	3,730
110	35,800	28,794	7,006	3,950
115	34,800	28,884	5,916	4,170
TVA Conditions @ 95° OD DB, 75° ID DB 63° ID WB				
95°	37,600	28,952	8,648	3,360

MODEL: DZ14SA0481K + ARUF61D14** + TXV				
Conditions: 80 °F IBD, 67 °F IWB @ 1560 CFM				
OUTDOOR TEM. ° F.	TOTAL BTU/H	SENSIBLE BTU/H	LATENT BTU/H	TOTAL WATTS
75	48,300	35,742	12,558	3,110
80	47,700	36,005	11,696	3,290
85	47,100	36,267	10,833	3,470
90	46,550	35,909	10,642	3,665
95	45,000	35,550	9,450	3,860
100	43,750	34,988	8,763	4,075
105	42,500	34,425	8,075	4,290
110	41,350	34,499	6,852	4,545
115	40,200	34,572	5,628	4,800
TVA Conditions @ 95° OD DB, 75° ID DB 63° ID WB				
95°	43,400	34,720	8,680	3,860

MODEL: DZ14SA0491K* + ARUF49C14** + TXV				
Conditions: 80 °F IBD, 67 °F IWB @ 1400 CFM				
OUTDOOR TEM. ° F.	TOTAL BTU/H	SENSIBLE BTU/H	LATENT BTU/H	TOTAL WATTS
75	47,700	33,867	13,833	3,000
80	47,100	33,906	13,194	3,175
85	46,500	33,945	12,555	3,350
90	45,500	33,660	11,840	3,540
95	44,500	33,375	11,125	3,730
100	43,250	33,068	10,183	3,940
105	42,000	32,760	9,240	4,150
110	40,850	32,856	7,995	4,400
115	39,700	32,951	6,749	4,650
TVA Conditions @ 95° OD DB, 75° ID DB 63° ID WB				
95°	42,900	32,604	10,296	3,730

MODEL: DZ14SA0601K* + ASPT61D14** + TXV				
Conditions: 80 °F IBD, 67 °F IWB @ 1790 CFM				
OUTDOOR TEM. ° F.	TOTAL BTU/H	SENSIBLE BTU/H	LATENT BTU/H	TOTAL WATTS
75	60,600	42,420	18,180	3,770
80	59,850	42,782	17,069	4,010
85	59,100	43,143	15,957	4,250
90	57,800	42,759	15,041	4,505
95	56,500	42,375	14,125	4,760
100	54,900	41,708	13,192	5,045
105	53,300	41,041	12,259	5,330
110	51,900	41,226	10,675	5,670
115	50,500	41,410	9,090	6,010
TVA Conditions @ 95° OD DB, 75° ID DB 63° ID WB				
95°	54,500	41,420	13,080	4,770

OUTDOOR UNIT	INDOOR UNITS		COOLING RATINGS ^				TVA RATINGS ^3		HEATING RATINGS ^			CFM	AHRI #
	COILS/AIR HANDLERS	FURNACES	TOTAL	SENS.	SEER ¹	EER ²	TOTAL	SENS.	Hi ⁴	HSPF ⁵	Low ⁶		
DZ14SN 0181A*	ARUF25B14A*		17,600	13,900	14	11.5	17,000	13,600	18,000	8.2	10,000	610	7998699
	ARUF25B14A*+TXV		17,400	13,700	14	11.5	16,800	13,400	18,000	8.2	10,000	610	7998700
	ASPT25B14A*		18,000	14,200	15	12	17,400	13,900	17,200	8.2	10,000	580	8245401
	ASPT29B14A*		18,000	14,200	15	12.5	17,400	13,900	17,200	8.5	10,000	565	8245402
	AWUF31XX16A*		17,200	13,600	14.5	12	16,600	13,300	17,200	8.2	10,000	620	7998702
	AWUF31XX16A*+TXV		17,200	13,600	15	12.5	16,600	13,300	17,200	8.2	10,000	620	7998703
	AWUT31XX16A*		17,200	13,900	15	12.5	16,600	13,600	17,200	8.2	10,000	590	10567532
	CA*F3137*6A*+EEP+TXV		17,600	13,900	14	11.5	17,000	13,600	18,000	8.2	10,000	610	7998704
	CA*F3636*6D*+MBVC1200**~1A*+TXV		17,600	13,900	15	12.5	17,000	13,600	17,600	8.2	10,000	600	7998705
	CA*F3636*6D*+TXV	D*96VE0403BNA*	17,200	13,500	14.5	12.2	16,600	13,600	17,600	8.2	10,000	625	10338821
	CA*F3636*6D*+TXV	D*80VC0603B*A*	17,800	14,400	15.0	12.5	17,200	14,000	17,800	8.2	10,000	550	9949469
	CA*F3636*6D*+TXV	D*80VC0803B*A*	17,800	14,400	15.0	12.5	17,200	14,000	17,800	8.2	10,000	600	9949472
	CA*F3636*6D*+TXV	D*80HE0603B*A*	17,800	14,100	15	12.5	17,200	13,800	17,800	8.2	10,000	650	7998706
	CA*F3636*6D*+TXV	D*96VE0302BNA*	17,200	13,600	15	12.5	16,600	13,300	17,400	8.2	10,000	540	7998707
	CA*F3636*6D*+TXV	D*96VE0402BNA*	17,200	13,600	15	12.5	16,600	13,300	17,400	8.2	10,000	540	7998708
	CA*F3636*6D*+TXV	D*96VE0603BNA*	17,200	13,600	15	12.5	16,600	13,300	17,400	8.2	10,000	550	7998709
	CA*F3636*6D*+TXV	D*96VE0803BNA*	17,200	13,600	15	12.5	16,600	13,300	17,400	8.2	10,000	540	7998710
	CA*F3636*6D*+TXV	D*80VC0604B*A*	17,600	13,900	14.5	12	17,000	13,600	17,600	8.2	10,000	620	7998711
	CA*F3636*6D*+TXV	D*96VC0403BNA*	17,600	13,900	14.5	12	17,000	13,600	17,600	8.2	10,000	610	7998712
	CA*F3636*6D*+TXV	D*96VC0603BNA*	17,600	13,900	14.5	12	17,000	13,600	17,600	8.2	10,000	610	7998713
	CA*F3636*6D*+TXV	D*96VC0803BNA*	17,600	13,900	14.5	12	17,000	13,600	17,600	8.2	10,000	615	7998714
	CHPF3636B6C*+MBVC1200**~1A*+TXV		17,600	13,900	15	12.5	17,000	13,600	17,600	8.2	10,000	600	7998715
	CHPF3636B6C*+TXV	D*96VE0403BNA*	17,600	13,800	15.0	12.5	17,000	13,900	17,600	8.2	10,000	600	10338822
	CHPF3636B6C*+TXV	D*80VC0603B*A*	17,800	14,400	15.0	12.5	17,200	14,000	17,800	8.2	10,000	550	9949470
	CHPF3636B6C*+TXV	D*80VC0803B*A*	17,800	14,400	15.0	12.5	17,200	14,000	17,800	8.2	10,000	600	9949473
	CHPF3636B6C*+TXV	D*80HE0603B*A*	17,800	14,100	15	12.5	17,200	13,800	17,800	8.2	10,000	650	7998716
	CHPF3636B6C*+TXV	D*96VE0302BNA*	17,200	13,600	15	12.5	16,600	13,300	17,400	8.2	10,000	540	7998717
	CHPF3636B6C*+TXV	D*96VE0402BNA*	17,200	13,600	15	12.5	16,600	13,300	17,400	8.2	10,000	540	7998718
	CHPF3636B6C*+TXV	D*96VE0603BNA*	17,200	13,600	15	12.5	16,600	13,300	17,400	8.2	10,000	550	7998719
	CHPF3636B6C*+TXV	D*96VE0803BNA*	17,200	13,600	15	12.5	16,600	13,300	17,400	8.2	10,000	540	7998720
	CHPF3636B6C*+TXV	D*80VC0604B*A*	17,600	13,900	14.5	12	17,000	13,600	17,600	8.2	10,000	620	7998721
	CHPF3636B6C*+TXV	D*96VC0403BNA*	17,600	13,900	14.5	12	17,000	13,600	17,600	8.2	10,000	610	7998722
	CHPF3636B6C*+TXV	D*96VC0603BNA*	17,600	13,900	14.5	12	17,000	13,600	17,600	8.2	10,000	610	7998723
	CHPF3636B6C*+TXV	D*96VC0803BNA*	17,600	13,900	14.5	12	17,000	13,600	17,600	8.2	10,000	615	7998724
	CSCF3036N6D*+EEP+TXV		17,600	13,900	14	11.5	17,000	13,600	17,600	8.2	10,000	610	7998725
	CSCF3036N6D*+MBVC1200**~1A*+TXV		17,600	13,900	15	12.5	17,000	13,600	17,600	8.2	10,000	600	7998726
	CSCF3036N6D*+TXV	D*96VE0403BNA*	17,600	13,800	15.0	12.5	17,000	13,900	17,600	8.2	10,000	625	10338823
	CSCF3036N6D*+TXV	D*80VC0603B*A*	17,800	14,400	15.0	12.5	17,200	14,000	17,800	8.2	10,000	550	9949471
	CSCF3036N6D*+TXV	D*80VC0803B*A*	17,800	14,400	15.0	12.5	17,200	14,000	17,800	8.2	10,000	600	9949474
	CSCF3036N6D*+TXV	D*80HE0603B*A*	17,800	14,100	15	12.5	17,200	13,800	17,800	8.2	10,000	650	7998727
	CSCF3036N6D*+TXV	D*96VE0302BNA*	17,200	13,600	15	12.5	16,600	13,300	17,400	8.2	10,000	540	7998728
	CSCF3036N6D*+TXV	D*96VE0402BNA*	17,200	13,600	15	12.5	16,600	13,300	17,400	8.2	10,000	540	7998729
	CSCF3036N6D*+TXV	D*96VE0603BNA*	17,200	13,600	15	12.5	16,600	13,300	17,400	8.2	10,000	550	7998730
	CSCF3036N6D*+TXV	D*96VE0803BNA*	17,200	13,600	15	12.5	16,600	13,300	17,400	8.2	10,000	540	7998731
	CSCF3036N6D*+TXV	D*80VC0604B*A*	17,600	13,900	14.5	12	17,000	13,600	17,600	8.2	10,000	620	7998732
	CSCF3036N6D*+TXV	D*96VC0403BNA*	17,600	13,900	14.5	12	17,000	13,600	17,600	8.2	10,000	610	7998733
	CSCF3036N6D*+TXV	D*96VC0603BNA*	17,600	13,900	14.5	12	17,000	13,600	17,600	8.2	10,000	610	7998734
	CSCF3036N6D*+TXV	D*96VC0803BNA*	17,600	13,900	14.5	12	17,000	13,600	17,600	8.2	10,000	615	7998735

See Notes on Page 36.

OUTDOOR UNIT	INDOOR UNITS		COOLING RATINGS [^]				TVA RATINGS ³		HEATING RATINGS [^]			CFM	AHRI #
	COILS/AIR HANDLERS	FURNACES	TOTAL	SENS.	SEER ¹	EER ²	TOTAL	SENS.	HI ⁴	HSPF ⁵	LOW ⁶		
DZ14SN 0181A* (cont.)	DV24PTCB14A*		17,200	13,600	14.5	12	16,600	13,300	17,200	8.2	10,000	600	7998701
	DV25PTCB14A*		17,200	13,600	15	12	16,600	13,300	17,200	8.3	9,600	640	8996278
	DV29PTCB14A*		17,200	13,600	15	12.5	16,600	13,300	17,200	8.5	9,600	585	8996279
DZ14SN 0241A*	ARUF25B14A*		23,200	18,600	14	11.5	22,400	18,400	23,200	8.2	13,000	870	7998736
	ARUF25B14A*+TXV		23,200	18,600	14	11.5	22,400	18,400	23,200	8.2	12,600	870	7998737
	ASPT25B14A*		23,200	18,600	14.5	12	22,400	18,400	23,200	8.2	13,400	800	8245403
	ASPT29B14A*		23,400	18,700	15	12.5	22,600	18,500	23,200	8.5	13,400	790	8245404
	ASPT33C14B*		23,400	18,700	15	12.5	22,600	18,500	23,200	8.5	13,000	820	201835465
	AVPTC33C14A*		23,400	18,700	15	12.5	22,600	18,500	23,200	8.5	13,000	785	10269718
	AWUF31XX16A*		22,800	18,200	14.5	12	22,000	18,100	23,200	8.2	13,000	845	7998739
	AWUF31XX16A*+TXV		22,800	18,200	15	12.5	22,000	18,100	23,200	8.2	13,000	845	7998740
	AWUT31XX16A*		22,800	18,800	15	12.5	22,000	18,400	23,200	8.2	13,000	815	10567533
	CA*F3137*6A*+EEP+TXV		23,600	18,900	14	11.5	22,800	18,700	23,200	8.2	13,000	870	7998741
	CA*F3636*6D*	D*96VE0403BNA*	22,200	17,800	14.0	12.0	21,400	17,900	22,200	8.2	13,000	800	10338824
	CA*F3636*6D*	D*80VC0603B*A*	23,200	19,200	14.5	12.0	22,400	18,700	22,800	8.2	13,000	750	9949475
	CA*F3636*6D*	D*80VC0803B*A*	23,200	19,200	14.5	12.0	22,400	18,700	22,800	8.2	13,000	750	9949479
	CA*F3636*6D*	D*80VC0804C*A*	23,000	19,000	14.5	12.0	22,200	18,600	22,800	8.2	13,000	800	9949483
	CA*F3636*6D*	D*80HE0603B*A*	23,200	18,600	14.5	12	22,400	18,400	23,000	8.2	13,000	860	7998753
	CA*F3636*6D*	D*96VE0302BNA*	23,000	18,400	14.5	12	22,200	18,200	22,800	8.2	13,000	800	7998754
	CA*F3636*6D*	D*96VE0402BNA*	23,000	18,400	14.5	12	22,200	18,200	22,800	8.2	13,000	820	7998755
	CA*F3636*6D*	D*96VE0603BNA*	23,000	18,400	14.5	12	22,200	18,200	22,800	8.2	13,000	840	7998756
	CA*F3636*6D*	D*96VE0803BNA*	23,000	18,400	14.5	12	22,200	18,200	22,800	8.2	13,000	770	7998757
	CA*F3636*6D*	D*80VC0604B*A*	23,000	18,400	14.5	12	22,200	18,200	22,800	8.2	13,000	850	7998758
	CA*F3636*6D*	D*96VC0403BNA*	23,000	18,400	14.5	12	22,200	18,200	23,200	8.2	13,000	800	7998759
	CA*F3636*6D*	D*96VC0603BNA*	23,000	18,400	14.5	12	22,200	18,200	23,200	8.2	13,000	810	7998760
	CA*F3636*6D*	D*96VC0803BNA*	23,000	18,400	14.5	12	22,200	18,200	23,200	8.2	13,000	810	7998761
	CA*F3636*6D*+MBVC1200**-1A*		23,600	18,900	14.5	12	22,800	18,700	23,200	8.5	13,000	855	7998742
	CA*F3636*6D*+MBVC1200**-1A*+TXV		23,600	18,900	15	12.5	22,800	18,700	23,200	8.5	13,000	855	7998743
	CA*F3636*6D*+TXV	D*96VE0403BNA*	22,200	17,800	14.5	12.0	21,400	17,900	22,200	8.2	13,000	800	10338825
	CA*F3636*6D*+TXV	D*80VC0603B*A*	23,200	19,200	14.5	12.0	22,400	18,700	22,800	8.2	13,000	750	9949476
	CA*F3636*6D*+TXV	D*80VC0803B*A*	23,200	19,200	14.5	12.0	22,400	18,700	22,800	8.2	13,000	750	9949480
	CA*F3636*6D*+TXV	D*80VC0804C*A*	23,000	19,000	15.0	12.5	22,200	18,600	22,800	8.2	13,000	800	9949484
	CA*F3636*6D*+TXV	D*80HE0603B*A*	23,200	18,600	14.5	12	22,400	18,400	23,000	8.2	13,000	860	7998744
	CA*F3636*6D*+TXV	D*96VE0302BNA*	23,000	18,400	15	12.5	22,200	18,200	22,800	8.2	13,000	800	7998745
	CA*F3636*6D*+TXV	D*96VE0402BNA*	23,000	18,400	15	12.5	22,200	18,200	22,800	8.2	13,000	820	7998746
	CA*F3636*6D*+TXV	D*96VE0603BNA*	23,000	18,400	15	12.5	22,200	18,200	22,800	8.2	13,000	840	7998747
	CA*F3636*6D*+TXV	D*96VE0803BNA*	23,000	18,400	15	12.5	22,200	18,200	22,800	8.2	13,000	770	7998748
	CA*F3636*6D*+TXV	D*80VC0604B*A*	23,000	18,400	15	12.5	22,200	18,200	22,800	8.2	13,000	850	7998749
	CA*F3636*6D*+TXV	D*96VC0403BNA*	23,000	18,400	14.5	12	22,200	18,200	23,200	8.2	13,000	800	7998750
	CA*F3636*6D*+TXV	D*96VC0603BNA*	23,000	18,400	14.5	12	22,200	18,200	23,200	8.2	13,000	810	7998751
	CA*F3636*6D*+TXV	D*96VC0803BNA*	23,000	18,400	14.5	12	22,200	18,200	23,200	8.2	13,000	810	7998752
	CHPF3636B6C*	D*96VE0403BNA*	22,800	18,300	14.0	12.0	22,000	18,400	22,400	8.2	13,000	725	10338826
	CHPF3636B6C*	D*80VC0603B*A*	23,200	19,200	14.5	12.0	22,400	18,700	22,800	8.2	13,000	750	9949477
	CHPF3636B6C*	D*80VC0803B*A*	23,200	19,200	14.5	12.0	22,400	18,700	22,800	8.2	13,000	750	9949481
	CHPF3636B6C*	D*80HE0603B*A*	23,200	18,600	14.5	12	22,400	18,400	23,200	8.2	13,000	860	7998774
CHPF3636B6C*	D*96VE0302BNA*	23,000	18,400	14.5	12	22,200	18,200	22,800	8.2	13,000	800	7998775	
CHPF3636B6C*	D*96VE0402BNA*	23,000	18,400	14.5	12	22,200	18,200	22,800	8.2	13,000	820	7998776	
CHPF3636B6C*	D*96VE0603BNA*	23,000	18,400	14.5	12	22,200	18,200	22,800	8.2	13,000	840	7998777	

See Notes on Page 36.

OUTDOOR UNIT	INDOOR UNITS		COOLING RATINGS ^				TVA RATINGS ^3		HEATING RATINGS ^			CFM	AHRI #
	COILS/AIR HANDLERS	FURNACES	TOTAL	SENS.	SEER ¹	EER ²	TOTAL	SENS.	HI ⁴	HSPF ⁵	LOW ⁶		
DZ14SN 0241A* (cont.)	CHPF3636B6C*	D*96VE0803BNA*	23,000	18,400	14.5	12	22,200	18,200	22,800	8.2	13,000	770	7998778
	CHPF3636B6C*	D*80VC0604B*A*	23,000	18,400	14.5	12	22,200	18,200	22,800	8.2	13,000	850	7998779
	CHPF3636B6C*	D*96VC0403BNA*	23,000	18,400	14.5	12	22,200	18,200	23,200	8.2	13,000	800	7998780
	CHPF3636B6C*	D*96VC0603BNA*	23,000	18,400	14.5	12	22,200	18,200	23,200	8.2	13,000	810	7998781
	CHPF3636B6C*	D*96VC0803BNA*	23,000	18,400	14.5	12	22,200	18,200	23,200	8.2	13,000	810	7998782
	CHPF3636B6C*+EEP+TXV		23,200	18,600	14	11.5	22,400	18,400	23,200	8.2	13,000	870	7998762
	CHPF3636B6C*+MBVC1200**-1A*		23,600	18,900	14.5	12	22,800	18,700	23,200	8.5	13,000	855	7998763
	CHPF3636B6C*+MBVC1200**-1A*+TXV		23,600	18,900	15	12.5	22,800	18,700	23,200	8.5	13,000	855	7998764
	CHPF3636B6C*+TXV	D*96VE0403BNA*	22,800	18,300	14.5	12.0	22,000	18,400	22,400	8.2	13,000	725	10338827
	CHPF3636B6C*+TXV	D*80VC0603B*A*	23,200	19,200	14.5	12.0	22,400	18,700	22,800	8.2	13,000	750	9949478
	CHPF3636B6C*+TXV	D*80VC0803B*A*	23,200	19,200	14.5	12.0	22,400	18,700	22,800	8.2	13,000	750	9949482
	CHPF3636B6C*+TXV	D*80HE0603B*A*	23,200	18,600	14.5	12	22,400	18,400	23,200	8.2	13,000	860	7998765
	CHPF3636B6C*+TXV	D*96VE0302BNA*	23,000	18,400	15	12.5	22,200	18,200	22,800	8.2	13,000	800	7998766
	CHPF3636B6C*+TXV	D*96VE0402BNA*	23,000	18,400	15	12.5	22,200	18,200	22,800	8.2	13,000	820	7998767
	CHPF3636B6C*+TXV	D*96VE0603BNA*	23,000	18,400	15	12.5	22,200	18,200	22,800	8.2	13,000	840	7998768
	CHPF3636B6C*+TXV	D*96VE0803BNA*	23,000	18,400	15	12.5	22,200	18,200	22,800	8.2	13,000	770	7998769
	CHPF3636B6C*+TXV	D*80VC0604B*A*	23,000	18,400	15	12.5	22,200	18,200	22,800	8.2	13,000	850	7998770
	CHPF3636B6C*+TXV	D*96VC0403BNA*	23,000	18,400	14.5	12	22,200	18,200	23,200	8.2	13,000	800	7998771
	CHPF3636B6C*+TXV	D*96VC0603BNA*	23,000	18,400	14.5	12	22,200	18,200	23,200	8.2	13,000	810	7998772
	CHPF3636B6C*+TXV	D*96VC0803BNA*	23,000	18,400	14.5	12	22,200	18,200	23,200	8.2	13,000	810	7998773
DV24PTCB14A*		23,200	18,600	14.5	12	22,400	18,400	23,200	8.2	13,400	860	7998738	
DV25PTCB14A*		23,200	18,600	14.5	12	22,400	18,400	23,200	8.3	13,200	850	8996280	
DV29PTCB14A*		23,200	18,600	15	12.5	22,400	18,400	23,200	8.5	13,200	795	8996281	
DV33PTCC14A*		23,400	18,700	15	12.5	22,600	18,500	23,200	8.5	13,000	785	10207465	
DZ14SN 0301A*	ARUF29B14A*+TXV		27,600	20,400	14	11.5	26,600	20,000	28,400	8.2	16,200	870	7998783
	ARUF31B14A*		28,000	20,800	14	12	27,000	20,200	27,800	8.2	16,200	910	7998784
	ASPT35B14A*		27,200	20,000	14.0	11.5	26,220	19,530	28,400	8.2	16,200	920	10341523
	ASPT36C14A*		27,800	20,600	14.5	12	26,800	20,000	28,000	8.5	16,000	960	8202548
	ASPT37B14A*		28,000	20,800	14.5	12	27,000	20,200	28,000	8.2	16,000	945	8245405
	ASPT37C14A*		28,400	21,000	15	12.5	27,400	20,600	28,000	8.5	16,000	1,045	8245406
	ASPT39C14B*		27,800	20,600	14.5	12	26,800	20,000	28,000	8.5	16,000	1,000	201835466
	AVPTC35B14A*		27,200	20,000	14.0	11.5	26,220	19,530	28,400	8.2	16,200	950	10341527
	AVPTC39C14A*		27,800	20,600	15	12	26,800	20,000	28,000	8.5	16,000	965	10269724
	AWUF31XX16A*		27,800	20,600	14	12	26,800	20,000	28,000	8.2	17,000	980	7998786
	AWUF31XX16A*+TXV		27,800	20,600	14.5	12	26,800	20,000	28,000	8.2	17,000	980	7998787
	AWUT31XX16A*		27,800	21,200	14.5	12	26,800	20,600	28,000	8.2	17,000	815	10567534
	CA*F3137*6A*	D*80VC0603B*A*	28,400	21,600	14.0	11.5	27,400	21,200	28,000	8.2	16,400	950	9949485
	CA*F3137*6A*	D*80VC0803B*A*	28,400	21,600	14.0	11.5	27,400	21,200	28,000	8.2	16,400	950	9949491
	CA*F3137*6A*	D*80HE0603B*A*	28,400	21,000	14	11.5	27,400	20,600	28,000	8.2	16,400	860	7998796
	CA*F3137*6A*	D*96VE0603BNA*	28,400	21,000	14	11.5	27,400	20,600	28,200	8.5	16,400	1,020	7998797
	CA*F3137*6A*	D*96VE0803BNA*	28,400	21,000	14	11.5	27,400	20,600	28,200	8.5	16,600	990	7998798
	CA*F3137*6A*	D*80VC0604B*A*	28,400	21,000	14	11.5	27,400	20,600	28,200	8.5	16,600	995	7998799
	CA*F3137*6A*	D*96VC0403BNA*	28,400	21,000	14.5	11.5	27,400	20,600	28,200	8.5	16,600	1,000	7998800
	CA*F3137*6A*	D*96VC0603BNA*	28,400	21,000	14.5	11.5	27,400	20,600	28,200	8.5	16,400	910	7998801
	CA*F3137*6A*	D*96VC0803BNA*	28,400	21,000	14.5	11.5	27,400	20,600	28,200	8.5	16,400	920	7998802
	CA*F3137*6A*+EEP+TXV		28,000	20,800	14	11.5	27,000	20,200	28,000	8.2	16,600	870	7998788
CA*F3137*6A*+TXV	D*80VC0603B*A*	28,400	21,600	14.5	12.0	27,400	21,200	28,000	8.2	16,400	950	9949486	
CA*F3137*6A*+TXV	D*80VC0803B*A*	28,400	21,600	14.5	12.0	27,400	21,200	28,000	8.2	16,400	950	9949492	

See Notes on Page 36.

OUTDOOR UNIT	INDOOR UNITS		COOLING RATINGS [^]				TVA RATINGS ³		HEATING RATINGS [^]			CFM	AHRI #
	COILS/AIR HANDLERS	FURNACES	TOTAL	SENS.	SEER ¹	EER ²	TOTAL	SENS.	HI ⁴	HSPF ⁵	LOW ⁶		
DZ14SN 0301A* (cont.)	CA*F3137*6A*+TXV	D*80HE0603B*A*	28,400	21,000	14.5	12	27,400	20,600	28,000	8.2	16,400	860	7998789
	CA*F3137*6A*+TXV	D*96VE0603BNA*	28,400	21,000	14.5	12	27,400	20,600	28,200	8.5	16,600	1,020	7998790
	CA*F3137*6A*+TXV	D*96VE0803BNA*	28,400	21,000	14.5	12	27,400	20,600	28,200	8.5	16,600	990	7998791
	CA*F3137*6A*+TXV	D*80VC0604B*A*	28,400	21,000	14.5	12	27,400	20,600	28,200	8.5	16,600	995	7998792
	CA*F3137*6A*+TXV	D*96VC0403BNA*	28,400	21,000	15	12	27,400	20,600	28,200	8.5	16,600	1,000	7998793
	CA*F3137*6A*+TXV	D*96VC0603BNA*	28,400	21,000	15	12	27,400	20,600	28,200	8.5	16,400	910	7998794
	CA*F3137*6A*+TXV	D*96VC0803BNA*	28,400	21,000	15	12	27,400	20,600	28,200	8.5	16,400	920	7998795
	CA*F3642*6D*+MBVC1200**.-1A*		28,000	20,800	14.5	12	27,000	20,200	28,000	8.5	16,200	855	7998803
	CA*F3642*6D*+MBVC1200**.-1A*+TXV		28,000	20,800	15	12.5	27,000	20,200	28,000	8.5	16,200	855	7998804
	CA*F3642*6D*+MBVC1600**.-1A*		28,000	20,800	14.5	12	27,000	20,200	28,000	8.5	16,200	855	7998805
	CA*F3642*6D*+MBVC1600**.-1A*+TXV		28,000	20,800	15	12.5	27,000	20,200	28,000	8.5	16,200	855	7998806
	CA*F3743*6D*	D*80VC0805D*A*	28,200	21,400	14.5	12.0	27,200	21,000	28,000	8.5	16,200	1,000	9949499
	CA*F3743*6D*	D*80VC0805C*A*	28,200	20,800	14.5	12	27,200	20,400	28,000	8.5	16,200	880	7998811
	CA*F3743*6D*	D*96VC0804CNA*	28,200	20,800	14.5	12	27,200	20,400	28,000	8.5	16,200	940	7998812
	CA*F3743*6D*	D*96VC1005CNA*	28,200	20,800	14.5	12	27,200	20,400	28,000	8.5	16,200	865	7998813
	CA*F3743*6D*+TXV	D*80VC0805D*A*	28,200	21,400	15.0	12.5	27,200	21,000	28,000	8.5	16,200	1,000	9949500
	CA*F3743*6D*+TXV		28,000	20,800	14	11.5	27,000	20,200	28,000	8.2	16,600	870	7998807
	CA*F3743*6D*+TXV	D*80VC0805C*A*	28,200	20,800	15	12.5	27,200	20,400	28,000	8.5	16,200	880	7998808
	CA*F3743*6D*+TXV	D*96VC0804CNA*	28,200	20,800	15	12.5	27,200	20,400	28,000	8.5	16,200	940	7998809
	CA*F3743*6D*+TXV	D*96VC1005CNA*	28,200	20,800	15	12.5	27,200	20,400	28,000	8.5	16,200	865	7998810
	CHPF3636B6C*	D*80VC0603B*A*	28,000	21,400	14.0	11.5	27,000	20,800	28,000	8.2	16,200	950	9949487
	CHPF3636B6C*	D*80VC0803B*A*	28,000	21,400	14.0	11.5	27,000	20,800	28,000	8.2	16,200	950	9949493
	CHPF3636B6C*	D*80HE0603B*A*	28,000	20,800	14	11.5	27,000	20,200	28,000	8.2	16,200	860	7998821
	CHPF3636B6C*	D*96VE0603BNA*	28,400	21,000	14	11.5	27,400	20,600	28,400	8.5	16,600	1,020	7998822
	CHPF3636B6C*	D*96VE0803BNA*	28,400	21,000	14	11.5	27,400	20,600	28,400	8.5	16,600	990	7998823
	CHPF3636B6C*	D*80VC0604B*A*	28,400	21,000	14	11.5	27,400	20,600	28,400	8.5	16,600	995	7998824
	CHPF3636B6C*	D*96VC0403BNA*	28,400	21,000	14	11.5	27,400	20,600	28,400	8.5	16,600	1,000	7998825
	CHPF3636B6C*	D*96VC0603BNA*	28,200	20,800	14	11.5	27,200	20,400	28,400	8.5	16,400	910	7998826
	CHPF3636B6C*	D*96VC0803BNA*	28,200	20,800	14	11.5	27,200	20,400	28,400	8.5	16,400	920	7998827
	CHPF3636B6C*+TXV	D*80VC0603B*A*	28,000	21,400	14.5	12.0	27,000	20,800	28,000	8.2	16,200	950	9949488
	CHPF3636B6C*+TXV	D*80VC0803B*A*	28,000	21,400	14.5	12.0	27,000	20,800	28,000	8.2	16,200	950	9949494
	CHPF3636B6C*+TXV	D*80HE0603B*A*	28,000	20,800	14.5	12	27,000	20,200	28,000	8.2	16,200	860	7998814
	CHPF3636B6C*+TXV	D*96VE0603BNA*	28,400	21,000	14.5	12	27,400	20,600	28,400	8.5	16,600	1,020	7998815
	CHPF3636B6C*+TXV	D*96VE0803BNA*	28,400	21,000	14.5	12	27,400	20,600	28,400	8.5	16,600	990	7998816
	CHPF3636B6C*+TXV	D*80VC0604B*A*	28,400	21,000	14.5	12	27,400	20,600	28,400	8.5	16,600	995	7998817
	CHPF3636B6C*+TXV	D*96VC0403BNA*	28,400	21,000	14.5	12	27,400	20,600	28,400	8.5	16,600	1,000	7998818
	CHPF3636B6C*+TXV	D*96VC0603BNA*	28,200	20,800	14.5	12	27,200	20,400	28,400	8.5	16,400	910	7998819
	CHPF3636B6C*+TXV	D*96VC0803BNA*	28,200	20,800	14.5	12	27,200	20,400	28,400	8.5	16,400	920	7998820
	CHPF3642C6C*	D*80VC0805D*A*	28,000	21,400	14.5	12.0	27,000	20,800	28,000	8.2	16,200	1,000	9949501
	CHPF3642C6C*	D*80VC0805C*A*	28,000	20,800	14.5	12	27,000	20,200	28,000	8.2	16,200	880	7998835
	CHPF3642C6C*	D*96VC0804CNA*	28,200	20,800	14.5	12	27,200	20,400	28,400	8.5	16,400	940	7998836
	CHPF3642C6C*	D*96VC1005CNA*	28,000	20,800	14.5	12	27,000	20,200	28,000	8.2	16,200	865	7998837
	CHPF3642C6C*+MBVC1200**.-1A*		28,000	20,800	14.5	12	27,000	20,200	28,000	8.5	16,200	855	7998828
	CHPF3642C6C*+MBVC1200**.-1A*+TXV		28,000	20,800	15	12.5	27,000	20,200	28,000	8.5	16,200	855	7998829
	CHPF3642C6C*+MBVC1600**.-1A*		28,000	20,800	14.5	12	27,000	20,200	28,000	8.5	16,200	855	7998830
CHPF3642C6C*+MBVC1600**.-1A*+TXV		28,000	20,800	15	12.5	27,000	20,200	28,000	8.5	16,200	855	7998831	
CHPF3642C6C*+TXV	D*80VC0805D*A*	28,000	21,400	15.0	12.5	27,000	20,800	28,000	8.2	16,200	1,000	9949502	
CHPF3642C6C*+TXV	D*80VC0805C*A*	28,000	20,800	15	12.5	27,000	20,200	28,000	8.2	16,200	880	7998832	

See Notes on Page 36.

OUTDOOR UNIT	INDOOR UNITS		COOLING RATINGS ^				TVA RATINGS ^3		HEATING RATINGS ^			CFM	AHRI #
	COILS/AIR HANDLERS	FURNACES	TOTAL	SENS.	SEER ¹	EER ²	TOTAL	SENS.	Hi ⁴	HSPF ⁵	Low ⁶		
DZ14SN 0301A* (cont.)	CHPF3642C6C*+TXV	D*96VC0804CNA*	28,200	20,800	15	12.5	27,200	20,400	28,400	8.5	16,400	940	7998833
	CHPF3642C6C*+TXV	D*96VC1005CNA*	28,000	20,800	15	12.5	27,000	20,200	28,000	8.2	16,200	865	7998834
	CHPF3743C6B*+EEP+TXV		28,000	20,800	14	11.5	27,000	20,200	28,000	8.2	17,000	870	7998838
	CSCF3642N6D*	D*80VC0603B*A*	28,400	21,600	14.0	11.5	27,400	21,200	28,200	8.5	16,200	950	9949489
	CSCF3642N6D*	D*80VC0803B*A*	28,400	21,600	14.0	11.5	27,400	21,200	28,200	8.5	16,200	950	9949495
	CSCF3642N6D*	D*80VC0804C*A*	28,400	21,600	14.0	11.5	27,400	21,200	28,200	8.5	16,600	950	9949497
	CSCF3642N6D*	D*80VC0805D*A*	28,400	21,600	14.5	12.0	27,400	21,200	28,200	8.5	16,200	1000	9949503
	CSCF3642N6D*	D*80HE0603B*A*	28,400	21,000	14	11.5	27,400	20,600	28,200	8.5	16,200	860	7998854
	CSCF3642N6D*	D*96VE0603BNA*	28,400	21,000	14	11.5	27,400	20,600	28,200	8.5	16,600	1,020	7998855
	CSCF3642N6D*	D*96VE0803BNA*	28,400	21,000	14	11.5	27,400	20,600	28,200	8.5	16,600	990	7998856
	CSCF3642N6D*	D*80VC0604B*A*	28,400	21,000	14	11.5	27,400	20,600	28,200	8.5	16,600	995	7998857
	CSCF3642N6D*	D*80VC0805C*A*	28,400	21,000	14.5	12	27,400	20,600	28,200	8.5	16,200	880	7998858
	CSCF3642N6D*	D*96VC0403BNA*	28,400	21,000	14	11.5	27,400	20,600	28,200	8.5	16,600	1,000	7998859
	CSCF3642N6D*	D*96VC0603BNA*	28,400	21,000	14	11.5	27,400	20,600	28,200	8.5	16,400	910	7998860
	CSCF3642N6D*	D*96VC0803BNA*	28,400	21,000	14	11.5	27,400	20,600	28,200	8.5	16,400	920	7998861
	CSCF3642N6D*	D*96VC0804CNA*	28,400	21,000	14.5	12	27,400	20,600	28,200	8.5	16,400	940	7998862
	CSCF3642N6D*	D*96VC1005CNA*	28,400	21,000	14.5	12	27,400	20,600	28,200	8.5	16,200	865	7998863
	CSCF3642N6D*+EEP+TXV		28,000	20,800	14	11.5	27,000	20,200	28,800	8.2	17,000	870	7998839
	CSCF3642N6D*+MBVC1200**-.1A*		28,400	21,000	14.5	12	27,400	20,600	28,200	8.5	16,200	855	7998840
	CSCF3642N6D*+MBVC1200**-.1A*+TXV		28,400	21,000	15	12.5	27,400	20,600	28,200	8.5	16,200	855	7998841
	CSCF3642N6D*+MBVC1600**-.1A*		28,400	21,000	14.5	12	27,400	20,600	28,200	8.5	16,200	855	7998842
	CSCF3642N6D*+MBVC1600**-.1A*+TXV		28,400	21,000	15	12.5	27,400	20,600	28,200	8.5	16,200	855	7998843
	CSCF3642N6D*+TXV	D*80VC0603B*A*	28,400	21,600	14.5	12.0	27,400	21,200	28,200	8.5	16,200	950	9949490
	CSCF3642N6D*+TXV	D*80VC0803B*A*	28,400	21,600	14.5	12.0	27,400	21,200	28,200	8.5	16,200	950	9949496
	CSCF3642N6D*+TXV	D*80VC0804C*A*	28,400	21,600	14.5	12.0	27,400	21,200	28,200	8.5	16,600	950	9949498
	CSCF3642N6D*+TXV	D*80VC0805D*A*	28,400	21,600	15.0	12.5	27,400	21,200	28,200	8.5	16,200	1000	9949504
	CSCF3642N6D*+TXV	D*80HE0603B*A*	28,400	21,000	14.5	12	27,400	20,600	28,200	8.5	16,200	860	7998844
	CSCF3642N6D*+TXV	D*96VE0603BNA*	28,400	21,000	14.5	12	27,400	20,600	28,200	8.5	16,600	1,020	7998845
	CSCF3642N6D*+TXV	D*96VE0803BNA*	28,400	21,000	14.5	12	27,400	20,600	28,200	8.5	16,600	990	7998846
	CSCF3642N6D*+TXV	D*80VC0604B*A*	28,400	21,000	14.5	12	27,400	20,600	28,200	8.5	16,600	995	7998847
	CSCF3642N6D*+TXV	D*80VC0805C*A*	28,400	21,000	15	12.5	27,400	20,600	28,200	8.5	16,200	880	7998848
	CSCF3642N6D*+TXV	D*96VC0403BNA*	28,400	21,000	14.5	12	27,400	20,600	28,200	8.5	16,600	1,000	7998849
CSCF3642N6D*+TXV	D*96VC0603BNA*	28,400	21,000	14.5	12	27,400	20,600	28,200	8.5	16,400	910	7998850	
CSCF3642N6D*+TXV	D*96VC0803BNA*	28,400	21,000	14.5	12	27,400	20,600	28,200	8.5	16,400	920	7998851	
CSCF3642N6D*+TXV	D*96VC0804CNA*	28,400	21,000	15	12.5	27,400	20,600	28,200	8.5	16,400	940	7998852	
CSCF3642N6D*+TXV	D*96VC1005CNA*	28,400	21,000	15	12.5	27,400	20,600	28,200	8.5	16,200	865	7998853	
DV25PTCB14A*		27,400	20,200	14	12	26,400	19,800	28,000	8.2	16,000	875	8996282	
DV30PTCC14A*		27,800	20,600	15	12.5	26,800	20,000	28,000	8.5	16,000	860	7998785	
DV35PTCB14A*		27,200	20,000	14.0	11.5	26,220	19,530	28,400	8.2	16,200	950	10341529	
DV37PTCB14A*		27,600	20,400	14.5	12	26,600	20,000	28,000	8.3	16,000	925	8996283	
DV37PTCC14A*		27,800	20,600	15	12.5	26,800	20,000	28,000	8.5	16,000	930	8996284	
DV39PTCC14A*		27,800	20,600	15	12	26,800	20,000	28,000	8.5	16,000	965	10207466	
DZ14SN 0361A*	ARUF37C14A*+TXV		34,600	25,600	14	11.5	33,400	25,000	32,800	8.2	19,000	1,010	7998864
	ARUF37D14A*		34,400	25,400	14	11.5	33,200	24,800	32,800	8.2	20,000	1,070	7998865
	ASPT37B14A*		34,000	25,200	14	12	32,800	24,600	32,600	8.2	20,000	1,120	8245407
	ASPT37C14A*		34,600	25,600	14.5	12	33,400	25,000	32,600	8.5	20,000	1,120	8245409
	ASPT39C14B*		34,000	25,200	14	11.5	32,800	24,600	32,000	8.2	20,000	1,220	201835467
	ASPT47C14B*		34,400	25,400	14.5	12	33,200	24,800	32,600	8.5	20,000	1,075	201835468

See Notes on Page 36.

OUTDOOR UNIT	INDOOR UNITS		COOLING RATINGS ^				TVA RATINGS ^3		HEATING RATINGS ^			CFM	AHRI #
	COILS/AIR HANDLERS	FURNACES	TOTAL	SENS.	SEER ¹	EER ²	TOTAL	SENS.	HI ⁴	HSPF ⁵	LOW ⁶		
DZ14SN 0361A* (cont.)	ASPT47D14A*		34,800	25,800	15	12.5	33,600	25,200	32,600	8.5	20,000	1,180	8245411
	AVPTC39C14A*		34,000	25,200	14	11.5	32,800	24,600	32,000	8.2	20,000	1,220	10269728
	CA*F3137*6A*+MBVC1200**.-1A*+TXV		34,600	25,600	14	11.5	33,400	25,000	32,000	8.2	19,000	1,050	9119202
	CA*F3137*6A*+TXV	D*80VC0603B*A*	34,600	25,800	14.0	11.5	33,400	25,200	32,200	8.2	19,600	1,100	9949505
	CA*F3137*6A*+TXV	D*80VC0803B*A*	34,600	25,800	14.0	11.5	33,400	25,200	32,200	8.2	19,600	1,150	9949506
	CA*F3137*6A*+TXV	D*80HE0603B*A*	34,600	25,600	14	11.5	33,400	25,000	32,200	8.2	19,600	1,100	7998867
	CA*F3137*6A*+TXV	D*96VE0603BNA*	34,600	25,600	14	11.5	33,400	25,000	32,000	8.2	19,600	1,020	7998868
	CA*F3137*6A*+TXV	D*96VE0803BNA*	34,600	25,600	14	11.5	33,400	25,000	32,000	8.2	19,600	1,010	7998869
	CA*F3137*6A*+TXV	D*80VC0604B*A*	34,600	25,600	14	11.5	33,400	25,000	32,000	8.2	19,600	1,100	7998870
	CA*F3137*6A*+TXV	D*96VC0403BNA*	34,600	25,600	14	11.5	33,400	25,000	32,000	8.2	19,600	1,080	7998871
	CA*F3137*6A*+TXV	D*96VC0603BNA*	34,600	25,600	14	11.5	33,400	25,000	32,000	8.2	19,600	1,060	7998872
	CA*F3137*6A*+TXV	D*96VC0803BNA*	34,600	25,600	14	11.5	33,400	25,000	32,000	8.2	19,600	1,100	7998873
	CA*F4860*6D*	D*80VC0805D*A*	34,600	25,800	14.0	11.5	33,400	25,200	32,200	8.5	20,000	1,100	9949507
	CA*F4860*6D*	D*80HE0805C*A*	34,600	25,600	14	11.5	33,400	25,000	32,200	8.5	20,000	1,030	7998883
	CA*F4860*6D*	D*80HE1005C*A*	35,600	26,400	14	11.5	34,200	25,800	32,200	8.5	20,000	1,090	7998884
	CA*F4860*6D*	D*96VE1004CNA*	35,600	26,400	14	11.5	34,200	25,800	32,800	8.5	20,000	1,200	7998885
	CA*F4860*6D*	D*80VC0805C*A*	34,600	25,600	14	11.5	33,400	25,000	32,200	8.5	20,000	1,070	7998886
	CA*F4860*6D*	D*80VC1005C*A*	34,600	25,600	14	11.5	33,400	25,000	32,200	8.5	20,000	1,070	7998887
	CA*F4860*6D*	D*96VC0804CNA*	34,800	25,800	14	11.5	33,600	25,200	32,400	8.5	20,000	1,080	7998888
	CA*F4860*6D*	D*96VC1005CNA*	34,800	25,800	14	11.5	33,600	25,200	32,400	8.5	20,000	1,100	7998889
	CA*F4860*6D*+MBVC2000**.-1A*		35,600	26,400	14.5	12	34,200	25,800	32,800	9	20,000	1,160	7998874
	CA*F4860*6D*+MBVC2000**.-1A*+TXV		35,600	26,400	15	12.5	34,200	25,800	32,800	9	20,000	1,160	7998875
	CA*F4860*6D*+TXV	D*80VC0805D*A*	34,600	25,800	14.5	12.0	33,400	25,200	32,200	8.5	20,000	1,100	9949508
	CA*F4860*6D*+TXV	D*80HE0805C*A*	34,600	25,600	14.5	12	33,400	25,000	32,200	8.5	20,000	1,030	7998876
	CA*F4860*6D*+TXV	D*80HE1005C*A*	35,600	26,400	14.5	12	34,200	25,800	32,200	8.5	20,000	1,090	7998877
	CA*F4860*6D*+TXV	D*96VE1004CNA*	35,600	26,400	14.5	12	34,200	25,800	32,800	8.5	20,000	1,200	7998878
	CA*F4860*6D*+TXV	D*80VC0805C*A*	34,600	25,600	14.5	12	33,400	25,000	32,200	8.5	20,000	1,070	7998879
	CA*F4860*6D*+TXV	D*80VC1005C*A*	34,600	25,600	14.5	12	33,400	25,000	32,200	8.5	20,000	1,070	7998880
	CA*F4860*6D*+TXV	D*96VC0804CNA*	34,800	25,800	14.5	12	33,600	25,200	32,400	8.5	20,000	1,080	7998881
	CA*F4860*6D*+TXV	D*96VC1005CNA*	34,800	25,800	14.5	12	33,600	25,200	32,400	8.5	20,000	1,100	7998882
	CA*F4961*6D*	D*80HE0805D*A*	35,600	26,400	14.5	11.5	34,200	25,800	33,000	8.5	20,000	1,275	7998898
	CA*F4961*6D*	D*96VE1205DNA*	35,000	26,000	14.5	11.5	33,800	25,200	32,600	8.5	20,000	1,045	7998899
	CA*F4961*6D*	D*96VC1205DNA*	34,800	25,800	14.5	12	33,600	25,200	32,600	8.5	20,000	1,050	7998900
	CA*F4961*6D*+EEP+TXV		35,400	26,200	14	11.5	34,000	25,600	33,200	8.2	20,600	1,070	7998890
	CA*F4961*6D*+MBVC1200**.-1A*		35,600	26,400	14.5	12	34,200	25,800	32,400	8.5	20,000	1,050	7998891
	CA*F4961*6D*+MBVC1200**.-1A*+TXV		35,600	26,400	15	12.5	34,200	25,800	32,400	8.5	20,000	1,050	7998892
	CA*F4961*6D*+MBVC1600**.-1A*		35,600	26,400	14.5	12	34,200	25,800	32,400	8.5	20,000	1,075	7998893
	CA*F4961*6D*+MBVC1600**.-1A*+TXV		35,600	26,400	15	12.5	34,200	25,800	32,400	8.5	20,000	1,075	7998894
	CA*F4961*6D*+TXV	D*80HE0805D*A*	35,600	26,400	15	12	34,200	25,800	33,000	8.5	20,000	1,275	7998895
	CA*F4961*6D*+TXV	D*96VE1205DNA*	35,000	26,000	15	12	33,800	25,200	32,600	8.5	20,000	1,045	7998896
	CA*F4961*6D*+TXV	D*96VC1205DNA*	34,800	25,800	15	12.5	33,600	25,200	32,600	8.5	20,000	1,050	7998897
	CAPT4961*4A*+EEP		34,600	25,600	14	11.5	33,400	25,000	33,200	8.2	20,600	1,070	9119203
	CHPF3743C6B*	D*80VC0805D*A*	35,000	26,000	14.0	11.5	33,800	25,400	32,000	8.5	20,000	1,100	9949509
	CHPF3743C6B*	D*80HE0805C*A*	35,000	26,000	14	11.5	33,800	25,200	32,000	8.5	20,000	1,030	7998909
	CHPF3743C6B*	D*80HE1005C*A*	34,600	25,600	14	11.5	33,400	25,000	32,800	8.5	20,000	1,030	7998910
CHPF3743C6B*	D*96VE1004CNA*	35,000	26,000	14	11.5	33,800	25,200	32,800	8.5	20,000	1,200	7998911	
CHPF3743C6B*	D*80VC0805C*A*	35,000	26,000	14	11.5	33,800	25,200	32,000	8.5	20,000	1,070	7998912	
CHPF3743C6B*	D*80VC1005C*A*	34,600	25,600	14	11.5	33,400	25,000	32,000	8.5	20,000	1,070	7998913	

See Notes on Page 36.

OUTDOOR UNIT	INDOOR UNITS		COOLING RATINGS ^				TVA RATINGS ^3		HEATING RATINGS ^			CFM	AHRI #
	COILS/AIR HANDLERS	FURNACES	TOTAL	SENS.	SEER ¹	EER ²	TOTAL	SENS.	HI ⁴	HSPF ⁵	LOW ⁶		
DZ14SN 0361A* (cont.)	CHPF3743C6B*	D*96VC0804CNA*	34,600	25,600	14	11.5	33,400	25,000	32,000	8.5	20,000	1,080	7998914
	CHPF3743C6B*	D*96VC1005CNA*	34,600	25,600	14	11.5	33,400	25,000	32,000	8.5	20,000	1,100	7998915
	CHPF3743C6B*+EEP+TXV		34,600	25,600	14	11.5	33,400	25,000	33,000	8.2	20,000	1,080	7998901
	CHPF3743C6B*+TXV	D*80VC0805D*A*	35,000	26,000	14.5	12.0	33,800	25,400	32,000	8.5	20,000	1,100	9949510
	CHPF3743C6B*+TXV	D*80HE0805C*A*	35,000	26,000	14.5	12	33,800	25,200	32,000	8.5	20,000	1,030	7998902
	CHPF3743C6B*+TXV	D*80HE1005C*A*	34,600	25,600	14.5	12	33,400	25,000	32,800	8.5	20,000	1,030	7998903
	CHPF3743C6B*+TXV	D*96VE1004CNA*	35,000	26,000	14.5	12	33,800	25,200	32,800	8.5	20,000	1,200	7998904
	CHPF3743C6B*+TXV	D*80VC0805C*A*	35,000	26,000	14.5	12	33,800	25,200	32,000	8.5	20,000	1,070	7998905
	CHPF3743C6B*+TXV	D*80VC1005C*A*	34,600	25,600	14.5	12	33,400	25,000	32,000	8.5	20,000	1,070	7998906
	CHPF3743C6B*+TXV	D*96VC0804CNA*	34,600	25,600	14.5	12	33,400	25,000	32,000	8.5	20,000	1,080	7998907
	CHPF3743C6B*+TXV	D*96VC1005CNA*	34,600	25,600	14.5	12	33,400	25,000	32,000	8.5	20,000	1,100	7998908
	CHPF4860D6D*	D*80HE0805D*A*	35,600	26,400	14	11.5	34,200	25,800	32,800	8.5	20,000	1,275	7998923
	CHPF4860D6D*	D*96VE1205DNA*	35,000	26,000	14	11.5	33,800	25,200	32,000	8.5	20,000	1,045	7998924
	CHPF4860D6D*	D*96VC1205DNA*	35,000	26,000	14	11.5	33,800	25,200	32,000	8.5	20,000	1,050	7998925
	CHPF4860D6D*+MBVC1600**-1A*		35,400	26,200	14.5	12	34,000	25,600	32,400	8.5	20,000	1,075	7998916
	CHPF4860D6D*+MBVC1600**-1A*+TXV		35,400	26,200	15	12.5	34,000	25,600	32,400	8.5	20,000	1,075	7998917
	CHPF4860D6D*+MBVC2000**-1A*		36,000	26,600	14.5	12	34,600	26,000	32,600	8.5	20,000	1,275	7998918
	CHPF4860D6D*+MBVC2000**-1A*+TXV		36,000	26,600	15	12.5	34,600	26,000	32,600	8.5	20,000	1,275	7998919
	CHPF4860D6D*+TXV	D*80HE0805D*A*	35,600	26,400	14.5	12	34,200	25,800	32,800	8.5	20,000	1,275	7998920
	CHPF4860D6D*+TXV	D*96VE1205DNA*	35,000	26,000	14.5	12	33,800	25,200	32,000	8.5	20,000	1,045	7998921
	CHPF4860D6D*+TXV	D*96VC1205DNA*	35,000	26,000	14.5	12	33,800	25,200	32,000	8.5	20,000	1,050	7998922
	CSCF4860N6D*	D*80VC0805D*A*	35,000	26,000	14.0	11.5	33,800	25,400	32,000	8.5	20,000	1,100	9949511
	CSCF4860N6D*	D*80HE0805C*A*	35,000	26,000	14	11.5	33,800	25,200	32,000	8.5	20,000	1,030	7998943
	CSCF4860N6D*	D*80HE0805D*A*	35,600	26,400	14	11.5	34,200	25,800	32,800	8.5	20,000	1,275	7998944
	CSCF4860N6D*	D*80HE1005C*A*	35,000	26,000	14	11.5	33,800	25,200	32,800	8.5	20,000	1,030	7998945
	CSCF4860N6D*	D*96VE1004CNA*	35,600	26,400	14	11.5	34,200	25,800	32,800	8.5	20,000	1,230	7998946
	CSCF4860N6D*	D*96VE1205DNA*	35,000	26,000	14	11.5	33,800	25,200	32,000	8.5	20,000	1,045	7998947
	CSCF4860N6D*	D*80VC0805C*A*	35,000	26,000	14	11.5	33,800	25,200	32,000	8.5	20,000	1,070	7998948
	CSCF4860N6D*	D*80VC1005C*A*	35,000	26,000	14	11.5	33,800	25,200	32,000	8.5	20,000	1,070	7998949
	CSCF4860N6D*	D*96VC0804CNA*	35,000	26,000	14	11.5	33,800	25,200	32,000	8.5	20,000	1,080	7998950
	CSCF4860N6D*	D*96VC1005CNA*	35,000	26,000	14	11.5	33,800	25,200	32,000	8.5	20,000	1,100	7998951
	CSCF4860N6D*	D*96VC1205DNA*	35,000	26,000	14	11.5	33,800	25,200	32,000	8.5	20,000	1,050	7998952
	CSCF4860N6D*+EEP+TXV		34,600	25,600	14	11.5	33,400	25,000	33,000	8.2	20,000	1,080	7998926
	CSCF4860N6D*+MBVC1200**-1A*		35,000	26,000	14	11.5	33,800	25,200	32,000	8.5	20,000	1,050	7998927
	CSCF4860N6D*+MBVC1200**-1A*+TXV		35,000	26,000	14.5	12	33,800	25,200	32,000	8.5	20,000	1,050	7998928
	CSCF4860N6D*+MBVC1600**-1A*		35,400	26,200	14.5	12	34,000	25,600	32,400	8.5	20,000	1,075	7998929
	CSCF4860N6D*+MBVC1600**-1A*+TXV		35,400	26,200	15	12.5	34,000	25,600	32,400	8.5	20,000	1,075	7998930
	CSCF4860N6D*+MBVC2000**-1A*		36,000	26,600	14.5	12	34,600	26,000	32,600	8.5	20,000	1,275	7998931
	CSCF4860N6D*+MBVC2000**-1A*+TXV		36,000	26,600	15	12.5	34,600	26,000	32,600	8.5	20,000	1,275	7998932
	CSCF4860N6D*+TXV	D*80VC0805D*A*	35,000	26,000	14.5	12.0	33,800	25,400	32,000	8.5	20,000	1,100	9949512
CSCF4860N6D*+TXV	D*80HE0805C*A*	35,000	26,000	14.5	12	33,800	25,200	32,000	8.5	20,000	1,030	7998933	
CSCF4860N6D*+TXV	D*80HE0805D*A*	35,600	26,400	14.5	12	34,200	25,800	32,800	8.5	20,000	1,275	7998934	
CSCF4860N6D*+TXV	D*80HE1005C*A*	35,000	26,000	14.5	12	33,800	25,200	32,800	8.5	20,000	1,030	7998935	
CSCF4860N6D*+TXV	D*96VE1004CNA*	35,600	26,400	14.5	12	34,200	25,800	32,800	8.5	20,000	1,230	7998936	
CSCF4860N6D*+TXV	D*96VE1205DNA*	35,000	26,000	14.5	12	33,800	25,200	32,000	8.5	20,000	1,045	7998937	
CSCF4860N6D*+TXV	D*80VC0805C*A*	35,000	26,000	14.5	12	33,800	25,200	32,000	8.5	20,000	1,070	7998938	
CSCF4860N6D*+TXV	D*80VC1005C*A*	35,000	26,000	14.5	12	33,800	25,200	32,000	8.5	20,000	1,070	7998939	
CSCF4860N6D*+TXV	D*96VC0804CNA*	35,000	26,000	14.5	12	33,800	25,200	32,000	8.5	20,000	1,080	7998940	

See Notes on Page 36.

OUTDOOR UNIT	INDOOR UNITS		COOLING RATINGS ^				TVA RATINGS ^3		HEATING RATINGS ^			CFM	AHRI #
	COILS/AIR HANDLERS	FURNACES	TOTAL	SENS.	SEER ¹	EER ²	TOTAL	SENS.	HI ⁴	HSPF ⁵	LOW ⁶		
DZ14SN 0361A* (cont.)	CSCF4860N6D*+TXV	D*96VC1005CNA*	35,000	26,000	14.5	12	33,800	25,200	32,000	8.5	20,000	1,100	7998941
	CSCF4860N6D*+TXV	D*96VC1205DNA*	35,000	26,000	14.5	12	33,800	25,200	32,000	8.5	20,000	1,050	7998942
	DV36PTCC14A*		34,400	25,400	14	11.5	33,200	24,800	32,600	8.2	20,000	1,150	7998866
	DV37PTCC14A*		34,400	25,400	14.5	12	33,200	24,800	32,600	8.5	20,000	1,130	8996285
	DV37PTCD14A*		34,400	25,400	14.5	12	33,200	24,800	32,600	8.5	20,000	1,145	8996286
	DV39PTCC14A*		34,000	25,200	14	11.5	32,800	24,600	32,000	8.2	20,000	1,220	10233019
	DV49PTCD14A*		34,600	25,600	15	12.5	33,400	25,000	32,600	8.5	20,000	1,075	8996287
DZ14SN 0421A*	ARUF43C14A*+TXV		39,000	29,600	14	11.5	37,600	29,000	40,000	8.2	24,000	1,300	7998953
	ARUF47D14A*		39,000	29,600	14	11.5	37,600	29,000	39,000	8.2	24,000	1,325	7998954
	ASPT47C14B*		39,500	30,000	14	12	38,000	29,400	39,000	8.2	23,000	1,320	201835469
	ASPT47D14A*		38,500	29,200	15	12.5	37,200	28,600	38,000	8.5	23,000	1,205	8245415
	ASPT49C14A*		38,000	28,800	14	12	36,600	28,200	38,000	8.2	22,600	1,200	10345400
	ASPT49D14A*		40,000	30,400	15	12.5	38,500	29,600	39,000	8.5	23,000	1,320	8245416
	ASPT59C14A*		39,500	30,000	14	12	38,000	29,400	39,000	8.2	23,000	1,255	8245418
	AVPTC49C14A*		38,000	28,800	14	12	36,600	28,200	38,000	8.2	22,600	1,200	10269731
	CA*F4860*6D*	D*80VC0805D*A*	39,500	30,800	14.0	11.5	38,000	30,000	39,000	8.5	23,600	1,400	9949513
	CA*F4860*6D*	D*80HE0805C*A*	39,500	30,000	14	11.5	38,000	29,400	39,500	8.5	23,600	1,325	7998971
	CA*F4860*6D*	D*80HE0805D*A*	39,500	30,000	14	11.5	38,000	29,400	39,500	8.5	23,600	1,280	7998972
	CA*F4860*6D*	D*80HE1005C*A*	39,500	30,000	14	11.5	38,000	29,400	39,000	8.5	23,600	1,225	7998973
	CA*F4860*6D*	D*96VE1004CNA*	39,500	30,000	14	11.5	38,000	29,400	39,000	8.5	23,600	1,230	7998974
	CA*F4860*6D*	D*96VE1205DNA*	39,500	30,000	14	11.5	38,000	29,400	39,500	8.5	23,600	1,300	7998975
	CA*F4860*6D*	D*80VC0805C*A*	39,500	30,000	14	11.5	38,000	29,400	39,000	8.5	23,600	1,240	7998976
	CA*F4860*6D*	D*80VC1005C*A*	39,500	30,000	14	11.5	38,000	29,400	39,000	8.5	23,600	1,250	7998977
	CA*F4860*6D*	D*96VC0804CNA*	39,500	30,000	14	11.5	38,000	29,400	39,500	8.5	23,600	1,310	7998978
	CA*F4860*6D*	D*96VC1005CNA*	39,500	30,000	14	11.5	38,000	29,400	39,500	8.5	23,600	1,300	7998979
	CA*F4860*6D*	D*96VC1205DNA*	39,500	30,000	14	11.5	38,000	29,400	39,000	8.5	23,600	1,250	7998980
	CA*F4860*6D*+EEP+TXV		39,500	30,000	14	11.5	38,000	29,400	39,500	8.2	24,000	1,300	7998956
	CA*F4860*6D*+MBVC1600**-1A*		40,000	30,400	14.5	12	38,500	29,600	39,000	8.5	23,600	1,300	7998957
	CA*F4860*6D*+MBVC1600**-1A*+TXV		40,000	30,400	15	12.5	38,500	29,600	39,000	8.5	23,600	1,300	7998958
	CA*F4860*6D*+MBVC2000**-1A*		40,500	30,800	14.5	12	39,000	30,000	39,000	9	23,600	1,310	7998959
	CA*F4860*6D*+MBVC2000**-1A*+TXV		40,500	30,800	15	12.5	39,000	30,000	39,000	9	23,600	1,310	7998960
	CA*F4860*6D*+TXV	D*80VC0805D*A*	39,500	30,800	14.5	12.0	38,000	30,000	39,000	8.5	23,600	1,400	9949514
	CA*F4860*6D*+TXV	D*80HE0805C*A*	39,500	30,000	14.5	12	38,000	29,400	39,500	8.5	23,600	1,325	7998961
	CA*F4860*6D*+TXV	D*80HE0805D*A*	39,500	30,000	14.5	12	38,000	29,400	39,500	8.5	23,600	1,280	7998962
	CA*F4860*6D*+TXV	D*80HE1005C*A*	39,500	30,000	14.5	12	38,000	29,400	39,000	8.5	23,600	1,225	7998963
	CA*F4860*6D*+TXV	D*96VE1004CNA*	39,500	30,000	14.5	12	38,000	29,400	39,000	8.5	23,600	1,230	7998964
	CA*F4860*6D*+TXV	D*96VE1205DNA*	39,500	30,000	14.5	12	38,000	29,400	39,500	8.5	23,600	1,300	7998965
	CA*F4860*6D*+TXV	D*80VC0805C*A*	39,500	30,000	14.5	12	38,000	29,400	39,000	8.5	23,600	1,240	7998966
	CA*F4860*6D*+TXV	D*80VC1005C*A*	39,500	30,000	14.5	12	38,000	29,400	39,000	8.5	23,600	1,250	7998967
	CA*F4860*6D*+TXV	D*96VC0804CNA*	39,500	30,000	14.5	12	38,000	29,400	39,500	8.5	23,600	1,310	7998968
CA*F4860*6D*+TXV	D*96VC1005CNA*	39,500	30,000	14.5	12	38,000	29,400	39,500	8.5	23,600	1,300	7998969	
CA*F4860*6D*+TXV	D*96VC1205DNA*	39,500	30,000	14.5	12	38,000	29,400	39,000	8.5	23,600	1,250	7998970	
CA*F4961*6D*	D*80VC0805D*A*	40,000	31,000	14.5	12.0	38,500	30,400	39,500	8.5	23,800	1,400	9949515	
CA*F4961*6D*	D*80HE0805C*A*	40,000	30,400	14.5	12	38,500	29,600	39,500	8.5	23,800	1,325	7998996	
CA*F4961*6D*	D*80HE0805D*A*	40,000	30,400	14.5	12	38,500	29,600	39,500	8.5	23,800	1,280	7998997	
CA*F4961*6D*	D*80HE1005C*A*	40,000	30,400	14.5	12	38,500	29,600	39,500	8.5	23,800	1,225	7998998	
CA*F4961*6D*	D*96VE1004CNA*	40,000	30,400	14.5	12	38,500	29,600	39,500	8.5	23,800	1,230	7998999	
CA*F4961*6D*	D*96VE1205DNA*	40,000	30,400	14.5	12	38,500	29,600	40,000	8.5	24,000	1,300	7999000	

See Notes on Page 36.

OUTDOOR UNIT	INDOOR UNITS		COOLING RATINGS [^]				TVA RATINGS ³		HEATING RATINGS [^]			CFM	AHRI #
	COILS/AIR HANDLERS	FURNACES	TOTAL	SENS.	SEER ¹	EER ²	TOTAL	SENS.	HI ⁴	HSPF ⁵	LOW ⁶		
DZ14SN 0421A* (cont.)	CA*F4961*6D*	D*80VC0805C*A*	40,000	30,400	14.5	12	38,500	29,600	39,500	8.5	23,800	1,240	7999001
	CA*F4961*6D*	D*80VC1005C*A*	40,000	30,400	14.5	12	38,500	29,600	39,500	8.5	23,800	1,250	7999002
	CA*F4961*6D*	D*96VC0804CNA*	40,000	30,400	14.5	12	38,500	29,600	39,500	8.5	23,800	1,310	7999003
	CA*F4961*6D*	D*96VC1005CNA*	40,000	30,400	14.5	12	38,500	29,600	39,500	8.5	23,800	1,300	7999004
	CA*F4961*6D*	D*96VC1205DNA*	40,000	30,400	14.5	12	38,500	29,600	39,500	8.5	23,800	1,250	7999005
	CA*F4961*6D*+EEP+TXV		40,000	30,400	14	12	38,500	29,600	40,000	8.5	24,000	1,300	7998981
	CA*F4961*6D*+MBVC1600**-1A*		40,000	30,400	14.5	12	38,500	29,600	39,500	9	23,800	1,300	7998982
	CA*F4961*6D*+MBVC1600**-1A*+TXV		40,000	30,400	15	12.5	38,500	29,600	39,500	9	23,800	1,300	7998983
	CA*F4961*6D*+MBVC2000**-1A*		40,500	30,800	14.5	12	39,000	30,000	39,000	9	23,800	1,310	7998984
	CA*F4961*6D*+MBVC2000**-1A*+TXV		40,500	30,800	15	12.5	39,000	30,000	39,000	9	23,800	1,310	7998985
	CA*F4961*6D*+TXV	D*80VC0805D*A*	40,000	31,000	15.0	12.5	38,500	30,400	39,500	8.5	23,800	1400	9949516
	CA*F4961*6D*+TXV	D*80HE0805C*A*	40,000	30,400	15	12.5	38,500	29,600	39,500	8.5	23,800	1,325	7998986
	CA*F4961*6D*+TXV	D*80HE0805D*A*	40,000	30,400	15	12.5	38,500	29,600	39,500	8.5	23,800	1,280	7998987
	CA*F4961*6D*+TXV	D*80HE1005C*A*	40,000	30,400	15	12.5	38,500	29,600	39,500	8.5	23,800	1,225	7998988
	CA*F4961*6D*+TXV	D*96VE1004CNA*	40,000	30,400	15	12.5	38,500	29,600	39,500	8.5	23,800	1,230	7998989
	CA*F4961*6D*+TXV	D*96VE1205DNA*	40,000	30,400	15	12.5	38,500	29,600	40,000	8.5	24,000	1,300	7998990
	CA*F4961*6D*+TXV	D*80VC0805C*A*	40,000	30,400	15	12.5	38,500	29,600	39,500	8.5	23,800	1,240	7998991
	CA*F4961*6D*+TXV	D*80VC1005C*A*	40,000	30,400	15	12.5	38,500	29,600	39,500	8.5	23,800	1,250	7998992
	CA*F4961*6D*+TXV	D*96VC0804CNA*	40,000	30,400	15	12.5	38,500	29,600	39,500	8.5	23,800	1,310	7998993
	CA*F4961*6D*+TXV	D*96VC1005CNA*	40,000	30,400	15	12.5	38,500	29,600	39,500	8.5	23,800	1,300	7998994
	CA*F4961*6D*+TXV	D*96VC1205DNA*	40,000	30,400	15	12.5	38,500	29,600	39,500	8.5	23,800	1,250	7998995
	CSCF4860N6D*	D*80VC0805D*A*	40,000	31,000	14.5	12.0	38,500	30,400	39,500	8.5	23,600	1,400	9949517
	CHPF4860D6D*	D*80HE0805D*A*	39,500	30,000	14	12	38,000	29,400	39,500	8.5	23,600	1,280	7999014
	CHPF4860D6D*	D*96VE1205DNA*	40,000	30,400	14	12	38,500	29,600	39,500	8.5	23,600	1,300	7999015
	CHPF4860D6D*	D*96VC1205DNA*	39,500	30,000	14	12	38,000	29,400	39,000	8.5	23,600	1,250	7999016
	CHPF4860D6D*+EEP+TXV		39,000	29,600	14	11.5	37,600	29,000	39,500	8.5	24,000	1,300	7999006
	CHPF4860D6D*+MBVC1600**-1A*		40,000	30,400	14.5	12	38,500	29,600	39,000	8.5	23,600	1,300	7999007
	CHPF4860D6D*+MBVC1600**-1A*+TXV		40,000	30,400	15	12.5	38,500	29,600	39,000	8.5	23,600	1,300	7999008
	CHPF4860D6D*+MBVC2000**-1A*		40,000	30,400	14.5	12	38,500	29,600	39,000	9	23,600	1,310	7999009
	CHPF4860D6D*+MBVC2000**-1A*+TXV		40,000	30,400	15	12.5	38,500	29,600	39,000	9	23,600	1,310	7999010
	CHPF4860D6D*+TXV	D*80HE0805D*A*	39,500	30,000	14.5	12	38,000	29,400	39,500	8.5	23,600	1,280	7999011
	CHPF4860D6D*+TXV	D*96VE1205DNA*	40,000	30,400	14.5	12	38,500	29,600	39,500	8.5	23,600	1,300	7999012
	CHPF4860D6D*+TXV	D*96VC1205DNA*	39,500	30,000	14.5	12	38,000	29,400	39,000	8.5	23,600	1,250	7999013
	CSCF4860N6D*	D*80HE0805C*A*	40,500	30,800	14	12	39,000	30,000	39,500	8.5	23,600	1,325	7999032
	CSCF4860N6D*	D*80HE0805D*A*	40,500	30,800	14	12	39,000	30,000	39,500	8.5	23,600	1,280	7999033
	CSCF4860N6D*	D*80HE1005C*A*	40,500	30,800	14	12	39,000	30,000	39,000	8.5	23,600	1,225	7999034
	CSCF4860N6D*	D*96VE1004CNA*	40,500	30,800	14	12	39,000	30,000	39,000	8.5	23,600	1,230	7999035
	CSCF4860N6D*	D*96VE1205DNA*	40,000	30,400	14	12	38,500	29,600	40,000	8.5	23,600	1,300	7999036
	CSCF4860N6D*	D*80VC0805C*A*	40,000	30,400	14.5	12	38,500	29,600	39,500	8.5	23,600	1,240	7999037
	CSCF4860N6D*	D*80VC1005C*A*	40,000	30,400	14.5	12	38,500	29,600	39,500	8.5	23,600	1,250	7999038
CSCF4860N6D*	D*96VC0804CNA*	40,000	30,400	14.5	12	38,500	29,600	39,500	8.5	23,600	1,310	7999039	
CSCF4860N6D*	D*96VC1005CNA*	40,000	30,400	14.5	12	38,500	29,600	39,500	8.5	23,600	1,300	7999040	
CSCF4860N6D*	D*96VC1205DNA*	40,000	30,400	14.5	12	38,500	29,600	39,500	8.5	23,600	1,250	7999041	
CSCF4860N6D*+EEP+TXV		40,500	30,800	14	12	39,000	30,000	40,000	8.5	24,000	1,300	7999017	
CSCF4860N6D*+MBVC1600**-1A*		40,000	30,400	14.5	12	38,500	29,600	39,500	8.5	23,600	1,300	7999018	
CSCF4860N6D*+MBVC1600**-1A*+TXV		40,000	30,400	15	12.5	38,500	29,600	39,500	8.5	23,600	1,300	7999019	
CSCF4860N6D*+MBVC2000**-1A*		40,000	30,400	14.5	12.5	38,500	29,600	39,500	9	23,600	1,310	7999020	
CSCF4860N6D*+MBVC2000**-1A*+TXV		40,000	30,400	15	13	38,500	29,600	39,000	9	23,600	1,310	7999021	

See Notes on Page 36.

OUTDOOR UNIT	INDOOR UNITS		COOLING RATINGS [^]				TVA RATINGS ³		HEATING RATINGS [^]			CFM	AHRI #
	COILS/AIR HANDLERS	FURNACES	TOTAL	SENS.	SEER ¹	EER ²	TOTAL	SENS.	HI ⁴	HSPF ⁵	Low ⁶		
DZ14SN 0421A* (cont.)	CSCF4860N6D*+TXV	D*80VC0805D*A*	40,000	31,000	15.0	12.0	38,500	30,400	39,500	8.5	23,600	1,400	9949518
	CSCF4860N6D*+TXV	D*80HE0805C*A*	40,500	30,800	14.5	12	39,000	30,000	39,500	8.5	23,600	1,325	7999022
	CSCF4860N6D*+TXV	D*80HE0805D*A*	40,500	30,800	14.5	12	39,000	30,000	39,500	8.5	23,600	1,280	7999023
	CSCF4860N6D*+TXV	D*80HE1005C*A*	40,500	30,800	14.5	12	39,000	30,000	39,000	8.5	23,600	1,225	7999024
	CSCF4860N6D*+TXV	D*96VE1004CNA*	40,500	30,800	14.5	12	39,000	30,000	39,000	8.5	23,600	1,230	7999025
	CSCF4860N6D*+TXV	D*96VE1205DNA*	40,000	30,400	14.5	12	38,500	29,600	40,000	8.5	23,600	1,300	7999026
	CSCF4860N6D*+TXV	D*80VC0805C*A*	40,000	30,400	15	12	38,500	29,600	39,500	8.5	23,600	1,240	7999027
	CSCF4860N6D*+TXV	D*80VC1005C*A*	40,000	30,400	15	12	38,500	29,600	39,500	8.5	23,600	1,250	7999028
	CSCF4860N6D*+TXV	D*96VC0804CNA*	40,000	30,400	15	12	38,500	29,600	39,500	8.5	23,600	1,310	7999029
	CSCF4860N6D*+TXV	D*96VC1005CNA*	40,000	30,400	15	12	38,500	29,600	39,500	8.5	23,600	1,300	7999030
	CSCF4860N6D*+TXV	D*96VC1205DNA*	40,000	30,400	15	12	38,500	29,600	39,500	8.5	23,600	1,250	7999031
	DV42PTCD14A*		39,500	30,000	15	12.5	38,000	29,400	39,000	8.5	23,000	1,220	7998955
	DV49PTCC14A*		38,000	28,800	14	12	36,600	28,200	38,000	8.2	22,600	1,200	10207468
	DV49PTCD14A*		40,000	30,400	15	12.5	38,500	29,600	39,000	9	23,000	1,320	8996290
DV59PTCC14A*		39,500	30,000	14	12	38,000	29,400	39,000	8.2	23,000	1,290	8996288	
DV59PTCD14A*		39,500	30,000	14.5	12.2	38,000	29,400	39,000	8.2	23,000	1,365	8996289	
DZ14SN 0481A*	ARUF49D14A*+TXV		44,000	34,800	14	11.5	42,500	34,000	44,000	8.5	27,600	1,450	9119195
	ARUF61D14A*+TXV		45,000	35,600	14	11.5	43,500	34,800	44,500	8.5	28,000	1,555	7999042
	ASPT49D14A*		44,500	35,200	14.5	12	43,000	34,400	44,000	8.5	27,600	1,430	8245419
	ASPT59C14A*		45,000	35,600	14	12	43,500	34,800	44,500	8.2	27,600	1,430	8245421
	ASPT61D14A*		45,000	35,600	14.5	12	43,500	34,800	44,500	8.5	27,600	1,555	8245422
	CA*F4961*6D*	D*80HE0805D*A*	45,500	36,000	14	11.5	44,000	35,000	44,500	9	27,600	1,500	7999053
	CA*F4961*6D*	D*96VE1205DNA*	45,500	36,000	14	11.5	44,000	35,000	44,500	9	27,600	1,520	7999054
	CA*F4961*6D*	D*96VC1205DNA*	45,500	36,000	14	11.5	44,000	35,000	44,500	9	27,600	1,530	7999055
	CA*F4961*6D*+EEP+TXV		45,000	35,600	14	11.5	43,500	34,800	45,000	9	27,600	1,555	7999045
	CA*F4961*6D*+MBVC1600**-1A*		45,500	36,000	14.5	12	44,000	35,000	44,500	9	27,600	1,500	7999046
	CA*F4961*6D*+MBVC1600**-1A*+TXV		45,500	36,000	15	12.5	44,000	35,000	44,500	9	27,600	1,500	7999047
	CA*F4961*6D*+MBVC2000**-1A*		46,000	36,400	14.5	12	44,500	35,400	44,500	9	27,600	1,570	7999048
	CA*F4961*6D*+MBVC2000**-1A*+TXV		46,000	36,400	15	12.5	44,500	35,400	44,500	9	27,600	1,570	7999049
	CA*F4961*6D*+TXV	D*80HE0805D*A*	45,500	36,000	14.5	12	44,000	35,000	44,500	9	27,600	1,500	7999050
	CA*F4961*6D*+TXV	D*96VE1205DNA*	45,500	36,000	14.5	12	44,000	35,000	44,500	9	27,600	1,520	7999051
	CA*F4961*6D*+TXV	D*96VC1205DNA*	45,500	36,000	14.5	12	44,000	35,000	44,500	9	27,600	1,530	7999052
	CHPF4860D6D*	D*80HE0805D*A*	45,000	35,600	14	11.5	43,500	34,800	44,000	9	27,600	1,500	7999064
	CHPF4860D6D*	D*96VE1205DNA*	45,000	35,600	14	11.5	43,500	34,800	44,500	9	27,600	1,520	7999065
	CHPF4860D6D*	D*96VC1205DNA*	45,000	35,600	14	11.5	43,500	34,800	44,500	9	27,600	1,530	7999066
	CHPF4860D6D*+EEP+TXV		45,000	35,600	14	11.5	43,500	34,800	44,500	9	27,600	1,555	7999056
	CHPF4860D6D*+MBVC1600**-1A*		45,000	35,600	14.5	12	43,500	34,800	44,000	9	27,600	1,500	7999057
	CHPF4860D6D*+MBVC1600**-1A*+TXV		45,000	35,600	15	12.5	43,500	34,800	44,000	9	27,600	1,500	7999058
	CHPF4860D6D*+MBVC2000**-1A*		45,500	36,000	14.5	12	44,000	35,000	44,000	9	27,600	1,570	7999059
	CHPF4860D6D*+MBVC2000**-1A*+TXV		45,500	36,000	15	12.5	44,000	35,000	44,000	9	27,600	1,570	7999060
	CHPF4860D6D*+TXV	D*80HE0805D*A*	45,000	35,600	14.5	12	43,500	34,800	44,000	9	27,600	1,500	7999061
	CHPF4860D6D*+TXV	D*96VE1205DNA*	45,000	35,600	14.5	12	43,500	34,800	44,500	9	27,600	1,520	7999062
	CHPF4860D6D*+TXV	D*96VC1205DNA*	45,000	35,600	14.5	12	43,500	34,800	44,500	9	27,600	1,530	7999063
	CSCF4860N6D*	D*80HE0805D*A*	45,000	35,600	14	11.5	43,500	34,800	44,000	9	27,600	1,500	7999075
	CSCF4860N6D*	D*96VE1205DNA*	45,000	35,600	14	11.5	43,500	34,800	44,000	9	27,600	1,520	7999076
	CSCF4860N6D*	D*96VC1205DNA*	45,000	35,600	14	11.5	43,500	34,800	44,000	9	27,600	1,530	7999077
CSCF4860N6D*+EEP+TXV		45,000	35,600	14	11.5	43,500	34,800	45,000	9	27,600	1,555	7999067	
CSCF4860N6D*+MBVC1600**-1A*		45,000	35,600	14	11.5	43,500	34,800	44,000	9	27,600	1,500	7999068	

See Notes on Page 36.

OUTDOOR UNIT	INDOOR UNITS		COOLING RATINGS [^]				TVA RATINGS ³		HEATING RATINGS [^]			CFM	AHRI #
	COILS/AIR HANDLERS	FURNACES	TOTAL	SENS.	SEER ¹	EER ²	TOTAL	SENS.	HI ⁴	HSPF ⁵	LOW ⁶		
DZ14SN 0481A* (cont.)	CSCF4860N6D*+MBVC1600**-1A*+TXV		45,000	35,600	15	12	43,500	34,800	44,000	9	27,600	1,500	7999069
	CSCF4860N6D*+MBVC2000**-1A*		45,500	36,000	14	12	44,000	35,000	44,000	9	27,600	1,570	7999070
	CSCF4860N6D*+MBVC2000**-1A*+TXV		45,500	36,000	15	12.5	44,000	35,000	44,000	9	27,600	1,570	7999071
	CSCF4860N6D*+TXV	D*80HE0805D*A*	45,000	35,600	14.5	12	43,500	34,800	44,000	9	27,600	1,500	7999072
	CSCF4860N6D*+TXV	D*96VE1205DNA*	45,000	35,600	14.5	12	43,500	34,800	44,000	9	27,600	1,520	7999073
	CSCF4860N6D*+TXV	D*96VC1205DNA*	45,000	35,600	14.5	12	43,500	34,800	44,000	9	27,600	1,530	7999074
	DV48PTCD14A*		45,000	35,600	14.5	12	43,500	34,800	44,500	9	27,600	1,550	7999044
	DV59PTCC14A*		45,000	35,600	14	12	43,500	34,800	44,500	8.5	27,600	1,485	8996291
	DV59PTCD14A*		45,000	35,600	14.5	12.2	43,500	34,800	44,500	8.2	27,400	1,580	8996292
	DV61PTCD14A*		45,500	36,000	15	12.5	44,000	35,000	44,500	9	27,200	1,455	8996293
DZ14SN 0491A*	ARUF49C14A*+TXV		44,500	33,400	14	11.5	43,000	32,600	46,000	8.5	27,600	1,400	7999078
	ARUF61D14A*		44,500	33,400	14	12	43,000	32,600	47,000	8.5	28,000	1,450	7999079
	ASPT49C14A*		43,500	34,400	14	12	42,000	31,800	45,500	8.2	27,600	1,395	10345401
	ASPT49D14A*		45,500	34,200	15	12.5	44,000	33,400	45,500	8.5	26,000	1,425	8245426
	ASPT59C14A*		45,000	33,800	14.5	12	43,500	33,000	46,000	8.5	26,000	1,430	8245424
	ASPT61D14A*		46,000	34,600	15	12.5	44,500	33,800	46,000	8.5	26,000	1,630	8245427
	AVPTC49C14A*		43,500	34,400	14	12	42,000	31,800	45,500	8.2	27,600	1,420	10269740
	CA*F4961*6D*	D*80VC0805D*A*	45,500	35,200	14.0	12.0	44,000	34,400	47,500	8.5	28,000	1,500	9949519
	CA*F4961*6D*	D*80HE0805C*A*	45,500	34,200	14	12	44,000	33,400	47,000	8.5	28,000	1,515	7999096
	CA*F4961*6D*	D*80HE0805D*A*	45,500	34,200	14.5	12	44,000	33,400	47,000	8.5	28,000	1,480	7999097
	CA*F4961*6D*	D*80HE1005C*A*	45,500	34,200	14	12	44,000	33,400	47,500	8.5	28,000	1,575	7999098
	CA*F4961*6D*	D*96VE1004CNA*	45,500	34,200	14	12	44,000	33,400	47,500	8.5	28,000	1,585	7999099
	CA*F4961*6D*	D*96VE1205DNA*	45,500	34,200	14.5	12	44,000	33,400	47,000	8.5	28,000	1,475	7999100
	CA*F4961*6D*	D*80VC0805C*A*	45,500	34,200	14	12	44,000	33,400	47,500	8.5	28,000	1,510	7999101
	CA*F4961*6D*	D*80VC1005C*A*	45,500	34,200	14	12	44,000	33,400	47,500	8.5	28,000	1,520	7999102
	CA*F4961*6D*	D*96VC0804CNA*	45,500	34,200	14.5	12	44,000	33,400	47,000	8.5	28,000	1,525	7999103
	CA*F4961*6D*	D*96VC1005CNA*	45,500	34,200	14	12	44,000	33,400	47,500	8.5	28,000	1,520	7999104
	CA*F4961*6D*	D*96VC1205DNA*	45,500	34,200	14	12	44,000	33,400	47,500	8.5	28,000	1,525	7999105
	CA*F4961*6D*+EEP+TXV		45,000	33,800	14	11.5	43,500	33,000	47,500	8.5	28,600	1,600	7999081
	CA*F4961*6D*+MBVC1600**-1A*		45,500	34,200	14.5	12	44,000	33,400	47,000	8.5	28,000	1,500	7999082
	CA*F4961*6D*+MBVC1600**-1A*+TXV		45,500	34,200	15	12.2	44,000	33,400	47,000	8.5	28,000	1,500	7999083
	CA*F4961*6D*+MBVC2000**-1A*		45,500	34,200	14.5	12.2	44,000	33,400	47,000	9	28,000	1,570	7999084
	CA*F4961*6D*+MBVC2000**-1A*+TXV		45,500	34,200	15	12.5	44,000	33,400	47,000	9	28,000	1,570	7999085
	CA*F4961*6D*+TXV	D*80VC0805D*A*	45,500	35,200	14.5	12.2	44,000	34,400	47,500	8.5	28,000	1,500	9949520
	CA*F4961*6D*+TXV	D*80HE0805C*A*	45,500	34,200	14.5	12.5	44,000	33,400	47,000	8.5	28,000	1,480	7999086
	CA*F4961*6D*+TXV	D*80HE0805D*A*	45,500	34,200	15	12.5	44,000	33,400	47,000	8.5	28,000	1,480	7999087
	CA*F4961*6D*+TXV	D*80HE1005C*A*	45,500	34,200	14.5	12.2	44,000	33,400	47,500	8.5	28,000	1,575	7999088
	CA*F4961*6D*+TXV	D*96VE1004CNA*	45,500	34,200	14.5	12.2	44,000	33,400	47,500	8.5	28,000	1,585	7999089
	CA*F4961*6D*+TXV	D*96VE1205DNA*	45,500	34,200	15	12.5	44,000	33,400	47,000	8.5	28,000	1,475	7999090
	CA*F4961*6D*+TXV	D*80VC0805C*A*	45,500	34,200	14.5	12.2	44,000	33,400	47,500	8.5	28,000	1,510	7999091
	CA*F4961*6D*+TXV	D*80VC1005C*A*	45,500	34,200	14.5	12.2	44,000	33,400	47,500	8.5	28,000	1,520	7999092
	CA*F4961*6D*+TXV	D*96VC0804CNA*	45,500	34,200	15	12.5	44,000	33,400	47,000	8.5	28,000	1,525	7999093
	CA*F4961*6D*+TXV	D*96VC1005CNA*	45,500	34,200	14.5	12	44,000	33,400	47,500	8.5	28,000	1,520	7999094
	CA*F4961*6D*+TXV	D*96VC1205DNA*	45,500	34,200	14.5	12.2	44,000	33,400	47,500	8.5	28,000	1,525	7999095
	CHPF4860D6D*	D*80HE0805D*A*	45,000	33,800	14	11.5	43,500	33,000	47,000	8.5	28,000	1,490	7999114
	CHPF4860D6D*	D*96VE1205DNA*	45,000	33,800	14	11.5	43,500	33,000	47,000	8.5	28,000	1,520	7999115
CHPF4860D6D*	D*96VC1205DNA*	45,500	34,200	14	12	44,000	33,400	47,000	8.5	28,000	1,525	7999116	
CHPF4860D6D*+EEP+TXV		45,000	33,800	14	11.5	43,500	33,000	47,000	8.5	28,600	1,600	7999106	

See Notes on Page 36.

OUTDOOR UNIT	INDOOR UNITS		COOLING RATINGS ^				TVA RATINGS ^3		HEATING RATINGS ^			CFM	AHRI #	
	COILS/AIR HANDLERS	FURNACES	TOTAL	SENS.	SEER ¹	EER ²	TOTAL	SENS.	Hi ⁴	HSPF ⁵	Low ⁶			
DZ14SN 0491A* (cont.)	CHPF4860D6D*+MBVC1600**~1A*		45,500	34,200	14.5	11.5	44,000	33,400	47,000	8.5	28,000	1,500	7999107	
	CHPF4860D6D*+MBVC1600**~1A*+TXV		45,500	34,200	15	12	44,000	33,400	47,000	8.5	28,000	1,500	7999108	
	CHPF4860D6D*+MBVC2000**~1A*		45,500	34,200	14.5	12	44,000	33,400	47,000	9	28,000	1,570	7999109	
	CHPF4860D6D*+MBVC2000**~1A*+TXV		45,500	34,200	15	12.5	44,000	33,400	47,000	9	28,000	1,570	7999110	
	CHPF4860D6D*+TXV		D*80HE0805D*A*	45,000	33,800	14.5	12	43,500	33,000	47,000	8.5	28,000	1,490	7999111
	CHPF4860D6D*+TXV		D*96VE1205DNA*	45,000	33,800	14.5	12	43,500	33,000	47,000	8.5	28,000	1,520	7999112
	CHPF4860D6D*+TXV		D*96VC1205DNA*	45,500	34,200	14.5	12.2	44,000	33,400	47,000	8.5	28,000	1,525	7999113
	CSCF4860N6D*		D*80VC0805D*A*	45,500	35,200	14.0	11.5	44,000	34,400	47,500	8.5	28,000	1500	9949521
	CSCF4860N6D*		D*80HE0805C*A*	45,000	33,800	14	11.5	43,500	33,000	47,000	8.5	28,000	1,480	7999132
	CSCF4860N6D*		D*80HE0805D*A*	45,000	33,800	14	11.5	43,500	33,000	47,000	8.5	28,000	1,490	7999133
	CSCF4860N6D*		D*80HE1005C*A*	45,500	34,200	14	11.5	44,000	33,400	47,500	8.5	28,000	1,575	7999134
	CSCF4860N6D*		D*96VE1004CNA*	45,500	34,200	14	11.5	44,000	33,400	47,500	8.5	28,000	1,585	7999135
	CSCF4860N6D*		D*96VE1205DNA*	45,000	33,800	14	11.5	43,500	33,000	47,000	8.5	28,000	1,520	7999136
	CSCF4860N6D*		D*80VC0805C*A*	45,500	34,200	14	11.5	44,000	33,400	47,500	8.5	28,000	1,590	7999137
	CSCF4860N6D*		D*80VC1005C*A*	45,500	34,200	14	11.5	44,000	33,400	47,500	8.5	28,000	1,610	7999138
	CSCF4860N6D*		D*96VC0804CNA*	45,000	33,800	14	11.5	43,500	33,000	47,000	8.5	28,000	1,525	7999139
	CSCF4860N6D*		D*96VC1005CNA*	45,500	34,200	14	11.5	44,000	33,400	47,500	8.5	28,000	1,610	7999140
	CSCF4860N6D*		D*96VC1205DNA*	45,500	34,200	14	12	44,000	33,400	47,500	8.5	28,000	1,525	7999141
	CSCF4860N6D*+EEP+TXV			45,000	33,800	14	11.5	43,500	33,000	47,500	8.5	28,600	1,600	7999117
	CSCF4860N6D*+MBVC1600**~1A*			45,000	33,800	14.5	11.5	43,500	33,000	47,000	8.5	28,000	1,500	7999118
	CSCF4860N6D*+MBVC1600**~1A*+TXV			45,000	33,800	15	12	43,500	33,000	47,000	8.5	28,000	1,500	7999119
	CSCF4860N6D*+MBVC2000**~1A*			45,500	34,200	14.5	12	44,000	33,400	47,000	9	28,000	1,570	7999120
	CSCF4860N6D*+MBVC2000**~1A*+TXV			45,500	34,200	15	12.5	44,000	33,400	47,000	9	28,000	1,570	7999121
	CSCF4860N6D*+TXV		D*80VC0805D*A*	45,500	35,200	14.5	12.0	44,000	34,400	47,500	8.5	28,000	1,500	9949522
	CSCF4860N6D*+TXV		D*80HE0805C*A*	45,000	33,800	14.5	12	43,500	33,000	47,000	8.5	28,000	1,480	7999122
	CSCF4860N6D*+TXV		D*80HE0805D*A*	45,000	33,800	14.5	12	43,500	33,000	47,000	8.5	28,000	1,490	7999123
	CSCF4860N6D*+TXV		D*80HE1005C*A*	45,500	34,200	14.5	12	44,000	33,400	47,500	8.5	28,000	1,575	7999124
	CSCF4860N6D*+TXV		D*96VE1004CNA*	45,500	34,200	14.5	12	44,000	33,400	47,500	8.5	28,000	1,585	7999125
	CSCF4860N6D*+TXV		D*96VE1205DNA*	45,000	33,800	14.5	12	43,500	33,000	47,000	8.5	28,000	1,520	7999126
	CSCF4860N6D*+TXV		D*80VC0805C*A*	45,500	34,200	14.5	12	44,000	33,400	47,500	8.5	28,000	1,590	7999127
	CSCF4860N6D*+TXV		D*80VC1005C*A*	45,500	34,200	14.5	12	44,000	33,400	47,500	8.5	28,000	1,610	7999128
	CSCF4860N6D*+TXV		D*96VC0804CNA*	45,000	33,800	14.5	12	43,500	33,000	47,000	8.5	28,000	1,525	7999129
CSCF4860N6D*+TXV		D*96VC1005CNA*	45,500	34,200	14.5	12	44,000	33,400	47,500	8.5	28,000	1,610	7999130	
CSCF4860N6D*+TXV		D*96VC1205DNA*	45,500	34,200	14.5	12.2	44,000	33,400	47,500	8.5	28,000	1,525	7999131	
DV48PTCD14A*			45,000	33,800	14.5	12	43,500	33,000	47,000	8.5	28,000	1,540	7999080	
DV49PTCC14A*			43,500	34,400	14	12	42,000	31,800	45,500	8.2	27,600	1,420	10207469	
DV59PTCC14A*			44,500	33,400	14.5	12	43,000	32,600	45,500	8.2	28,000	1,485	8996294	
DV59PTCD14A*			45,000	33,800	14.5	12.2	43,500	33,000	45,000	8.2	27,000	1,580	8996295	
DV61PTCD14A*			45,000	33,800	15	12.5	43,500	33,000	45,000	8.5	27,000	1,455	8996296	
DZ14SN 0601A*	ASPT61D14A*		56,500	43,000	14	11.5	54,500	42,000	59,000	8.5	36,000	1,800	7999142	
	CA*F4961*6D*+EEP+TXV		55,500	42,000	14	11.5	53,500	41,000	59,000	8.5	36,600	1,600	7999144	
	CA*F4961*6D*+MBVC2000**~1A*		57,000	43,500	14	11.5	55,000	42,500	59,000	9	36,600	1,770	7999145	
	CA*F4961*6D*+MBVC2000**~1A*+TXV		57,000	43,500	14.5	12	55,000	42,500	59,000	9	36,600	1,770	7999146	
	CA*F4961*6D*+TXV		D*80HE0805D*A*	56,000	42,500	14	11.5	54,000	41,500	59,000	8.5	36,600	1,700	7999147
	CA*F4961*6D*+TXV		D*96VE1205DNA*	56,000	42,500	14	11.5	54,000	41,500	58,000	8.5	36,000	1,600	7999148
	CA*F4961*6D*+TXV		D*96VC1205DNA*	56,000	42,500	14	11.5	54,000	41,500	58,000	8.5	36,000	1,600	7999149
	CHPF4860D6D*+EEP+TXV			55,000	42,000	14	11.5	53,000	41,000	57,000	8.5	36,600	1,600	7999150
	CHPF4860D6D*+MBVC2000**~1A*			57,000	43,500	14	11.5	55,000	42,500	59,000	9	36,000	1,770	7999151

See Notes on Page 36.

OUTDOOR UNIT	INDOOR UNITS		COOLING RATINGS [^]				TVA RATINGS ³		HEATING RATINGS [^]			CFM	AHRI #
	COILS/AIR HANDLERS	FURNACES	TOTAL	SENS.	SEER ¹	EER ²	TOTAL	SENS.	HI ⁴	HSPF ⁵	LOW ⁶		
DZ14SN 0601A* (cont.)	CHPF4860D6D*+MBVC2000**-1A*+TXV		57,000	43,500	14.5	12	55,000	42,500	59,000	9	36,000	1,770	7999152
	CHPF4860D6D*+TXV	D*80HE0805D*A*	56,000	42,500	14	11.5	54,000	41,500	59,000	8.5	37,000	1,700	7999153
	CHPF4860D6D*+TXV	D*96VE1205DNA*	56,000	42,500	14	11.5	54,000	41,500	59,000	8.5	36,000	1,600	7999154
	CHPF4860D6D*+TXV	D*96VC1205DNA*	56,000	42,500	14	11.5	54,000	41,500	58,000	8.5	36,600	1,600	7999155
	CSCF4860N6D*+MBVC2000**-1A*		57,000	43,500	14	11.5	55,000	42,500	59,000	9	36,000	1,770	7999156
	CSCF4860N6D*+MBVC2000**-1A*+TXV		57,000	43,500	14	12	55,000	42,500	59,000	9	36,000	1,770	7999157
	CSCF4860N6D*+TXV	D*80HE0805D*A*	56,000	42,500	14	11.5	54,000	41,500	59,000	8.5	36,000	1,700	7999158
	CSCF4860N6D*+TXV	D*96VE1205DNA*	56,000	42,500	14	11.5	54,000	41,500	59,000	8.5	36,000	1,600	7999159
	CSCF4860N6D*+TXV	D*96VC1205DNA*	56,000	42,500	14	11.5	54,000	41,500	58,000	8.5	36,000	1,600	7999160
	DV60PTCD14A*		56,000	42,500	14	11.5	54,000	41,500	59,000	8.5	36,000	1,745	7999143
	DV61PTCD14A*		56,000	42,500	14	11.5	54,000	41,500	59,000	8.5	36,000	1,775	8996297

[^] Rated in accordance with ANSI/AHRI Standard 210/240

¹ Seasonal Energy Efficiency Ratio

³ TVA Rating: BTU/h @ 75°F/ 63°F - 95°F

⁵ HSPF = Heating Seasonal Performance Factor

⁷ CFM at High stage

² Energy Efficiency Ratio @ 80°F/ 67°F/ 95°F

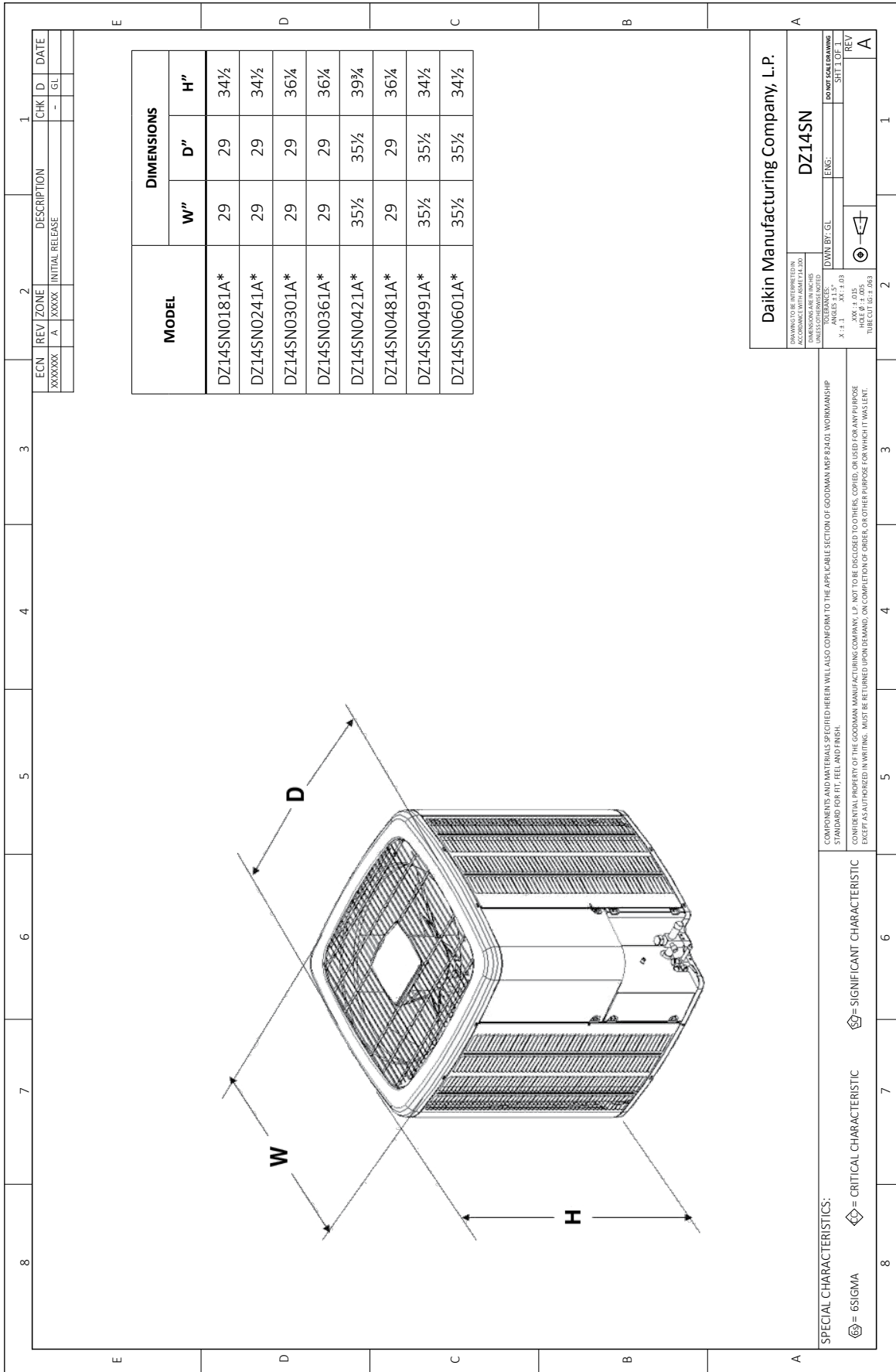
⁴ Rated heating capacity at 47°F outdoor per AHRI 210/240

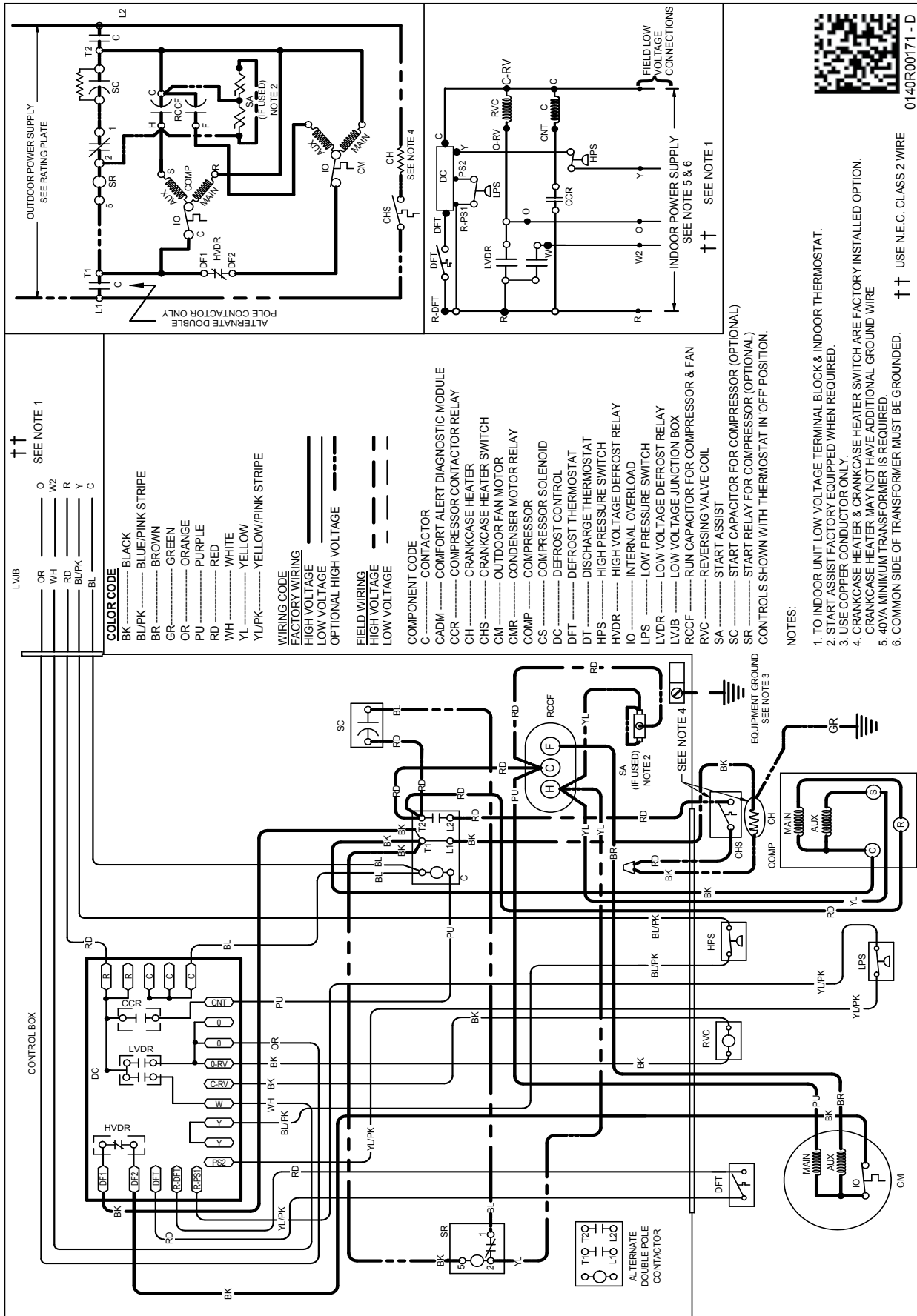
⁶ Heating capacity at 17°F outdoor

⁸ CFM at Intermediate and low stage

NOTES

- Always check the S&R plate for electrical data on the unit being installed.
- When matching outdoor unit to indoor unit, use the piston supplied with the outdoor unit or that specified on the piston kit chart supplied with the indoor unit.
- EEP - Order from Service Dept. Part No. B13707-38 or new Solid State Board B13707-35S. Part No. B13707-38 is not interchangeable with B13707-35S. The Daikin brand gas furnace contains the EEP cooling time delay.





0140R00171 - D

WARNING

High Voltage: Disconnect all power before servicing or installing this unit. Multiple power sources may be present. Failure to do so may cause property damage, personal injury, or death.

Wiring is subject to change. Always refer to the wiring diagram on the unit for the most up-to-date wiring.

ITEM #	DESCRIPTION	DZ14SN 018**	DZ14SN 024**	DZ14SN 030**	DZ14SN 036**	DZ14SN 038**	DZ14SN 042**	DZ14SN 048/049**	DZ14SN 060**
ABK-20	Anchor Bracket Kit *	X	X	X	X	X	X	X	X
ASC01	Anti-Short Cycle Kit	X	X	X	X	X	X	X	X
CSR-U-1	Hard-start Kit	X	X	X	X	X			
CSR-U-2	Hard-start Kit				X	X	X	X	X
CSR-U-3	Hard-start Kit							X	X
FSK01A1	Freeze Protection Kit	X	X	X	X	X	X	X	X
LAKT01A	Low-Ambient Kit	X	X	X	X	X	X	X	X
OT18-60A2	Outdoor Thermostat	X	X	X	X	X	X	X	X
OT/EHR18-60	Emergency Heat Relay Kit	X	X	X	X	X	X	X	X
TX2N4A ³	TXV Kit	X	X						
TX3N4 ³	TXV Kit			X	X	X			
TX5N4 ³	TXV Kit						X	X	X

* Contains 20 brackets; four brackets needed to anchor unit to pad

¹ Installed on indoor coil

² Required for heat pump applications where ambient temperatures fall below 0 °F with 50% or higher relative humidity.

³ Condensing units and heat pumps with reciprocating compressors require the use of start-assist components when used in conjunction with an indoor coil using a non-bleed thermal expansion valve refrigerant metering device. The TXV should always be sized based on the tonnage of the outdoor unit.

